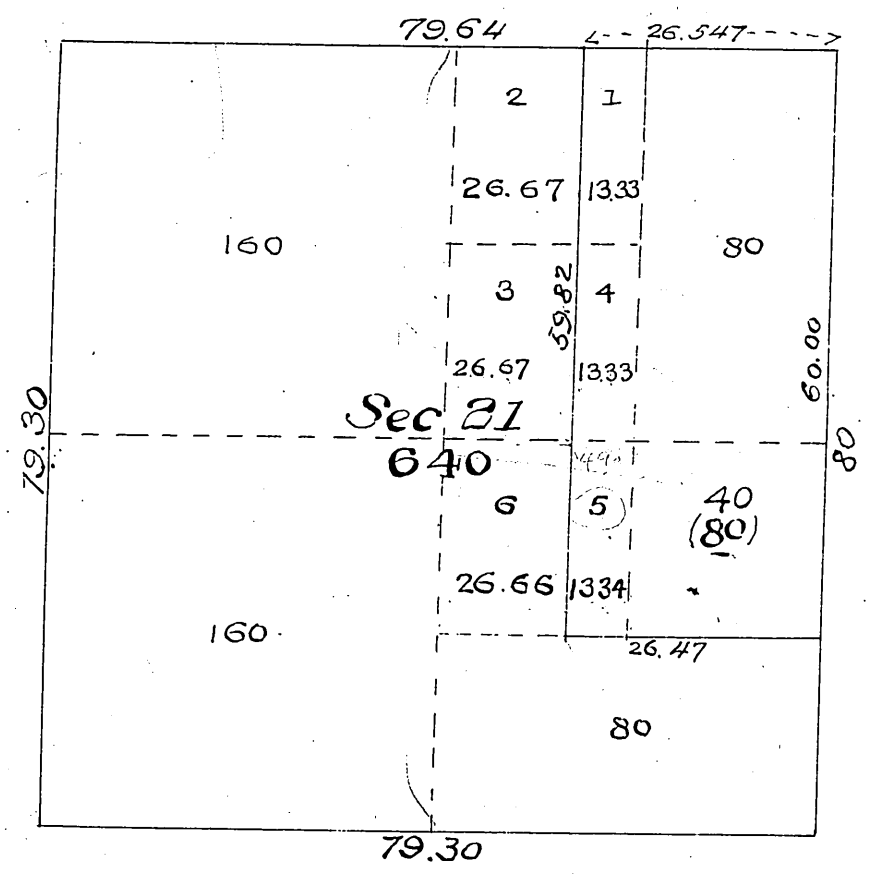


T4N
R15W
①

Supplemental Plat of Section 21 of
Township No 4 North, Range No 15 West, San Bernardino Meridian, California.



Received and filed in U. S. Land
Office Los Angeles
May 29 1901 -
A. J. Crookshank
Register

Scale 20 chains to the inch.

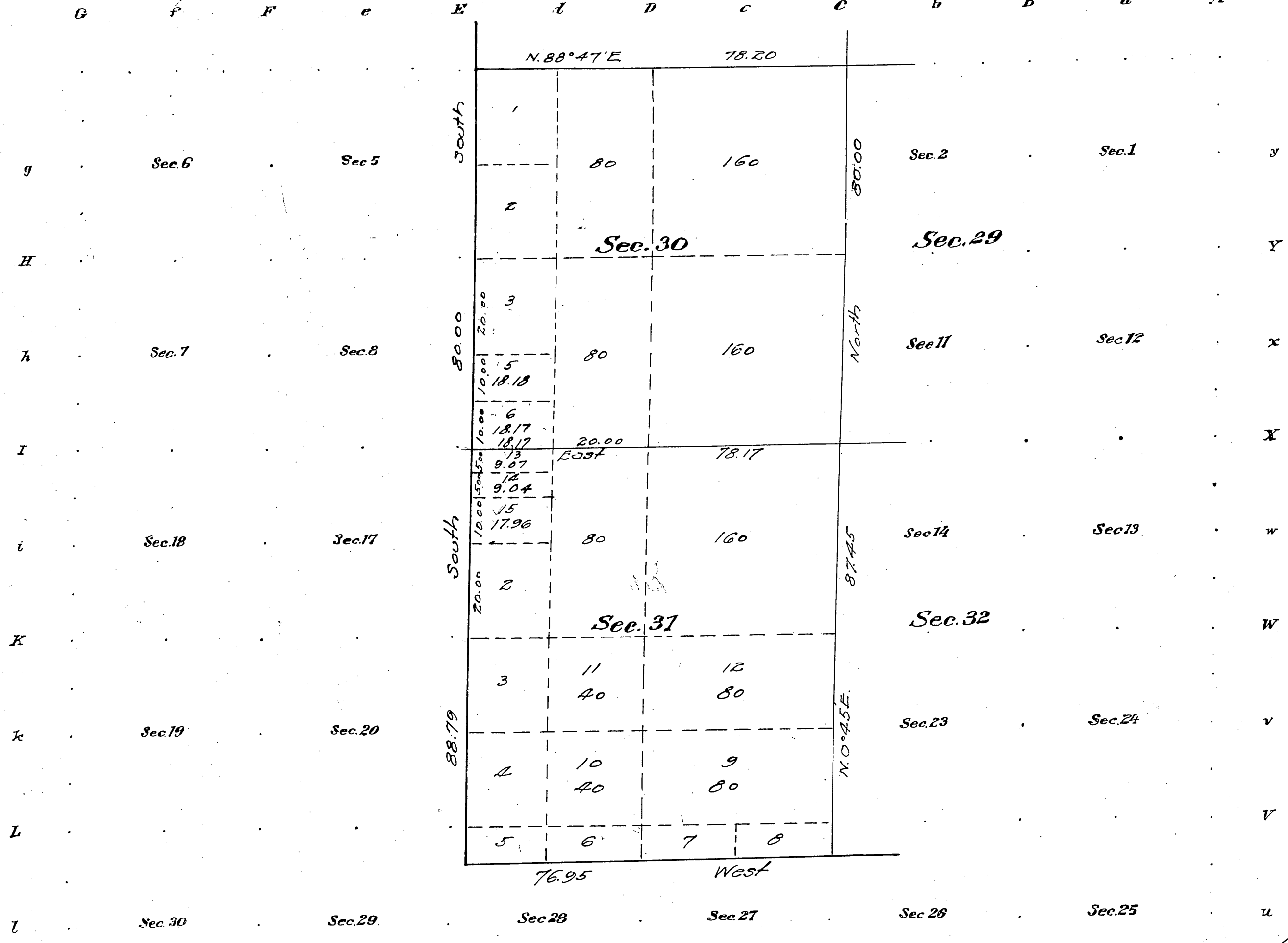
The above supplemental plat of Section 21 of Township No 4 North
Range No 15 West, San Bernardino Meridian, California, correctly shows
the areas as amended by protraction in conformity to instructions from
the General Land Office contained in letter "E," dated April 15, 1901
U. S. Surveyor General's Office
San Francisco, California
April 24, 1901.

J. M. Gleaves
U. S. Surveyor General
for California

(4-6754)

Supplemental Plat of Sections 30 and 31.
Township No 4 North, Range No 15 West, San Bernardino Meridian, California.

Scale: 20 chains = 1 inch.



NOTE:
This supplemental plat is authorized by letter "E" dated March 24, 1916, and is for the purpose of furnishing a proper description in patent to the heirs of George M. Y. B. Miller Los Angeles 017689.

Filed in U. S. Land Office,
Los Angeles Cal.
APR 22 1916

John D. Roche
Register.

Areas in Acres	
Public Land	
Indian Reservation	
Indian Allotments	
Mineral Claims	
Water Surface	
Total Area	

I hereby certify that the above plat subdividing Lot 4 in Section 30 and Lot 1 in Section 31, T. 4 N., R. 15 W., San Bernardino Meridian California, plat approved March 26, 1877, is correctly constructed in conformity with official data on file in this office, and is hereby approved.

U. S. Surveyor-General's Office
San Francisco, California,
April 2, 1916.

Frank W. Gould
U. S. Surveyor-General
for California

Scale 40 Chains to an inch
Mean Magnetic Declination

Surveys Designated	By Whom Surveyed	Contract		Amount of Surveys Mts. chs. lks.	When Surveyed	
		No.	Date		Began	Completed

The above map of Township No. Range No. of the
Meridian..... is strictly conformable to the field notes of the survey thereof on file
in this office which have been examined and approved
U. S. Surveyor General's Office.

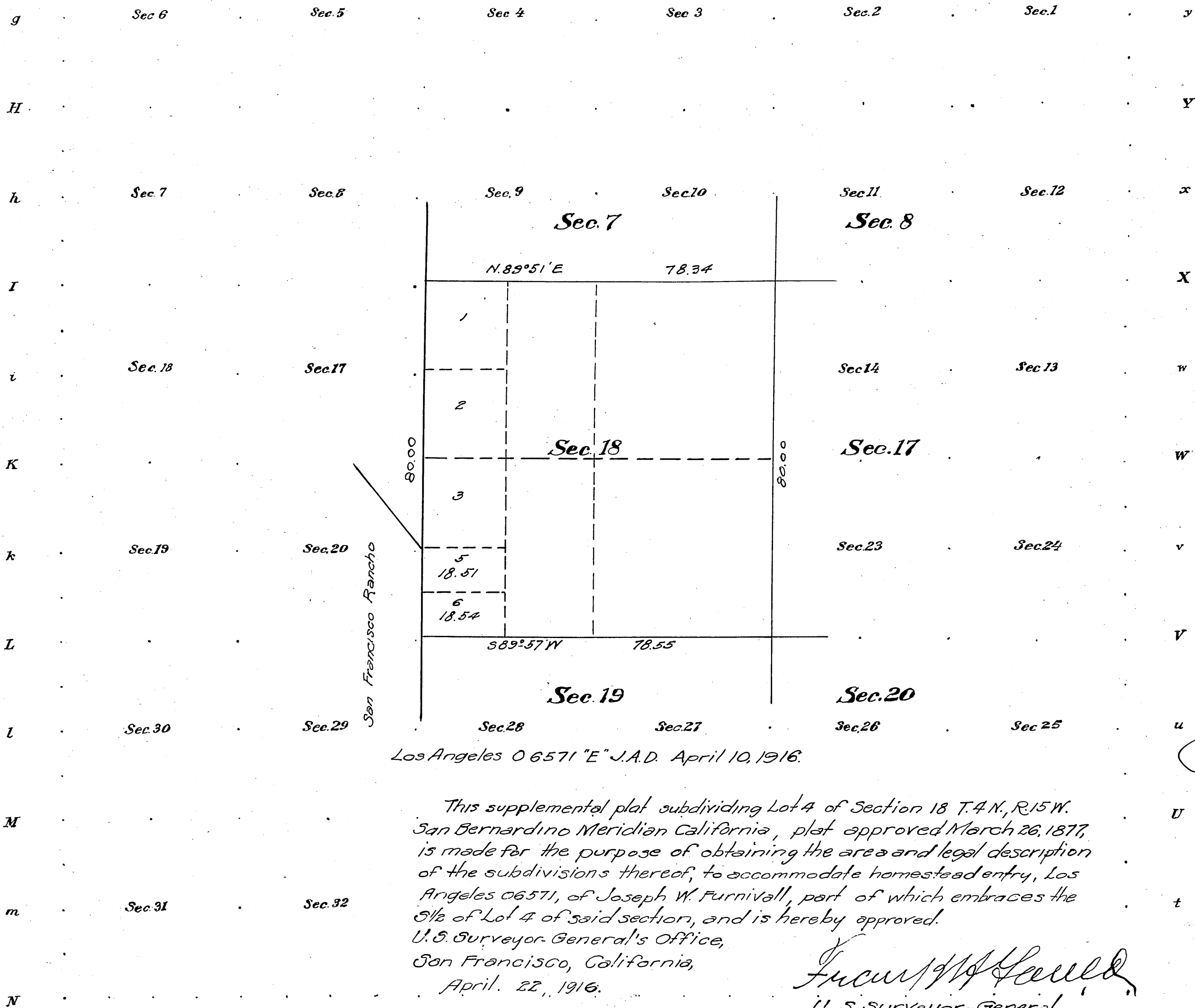
Surveyor General.

Township No 4 North, Supplemental Plat of Section 18, Range No 15 West, San Bernardino Meridian, California.

T4N
R15W
3

G F F e E d D c C b B a A

Scale: 20 chains = 1 inch



Filed in U. S. Land Office
Los Angeles, Cal.
MAY 16 1916

John D. Roche
Register.

Areas in Acres	
Public Land	
Indian Reservation	
Indian Allotments	
Mineral Claims	
Water Surface	
Total Area	

Scale 40 Chains to an inch

Mean Magnetic Declination

Surveys Designated	By Whom Surveyed	Group		Amount of Surveys			When Surveyed	
		No.	Date of Instructions	Mts.	chs.	lks.	Begun	Completed

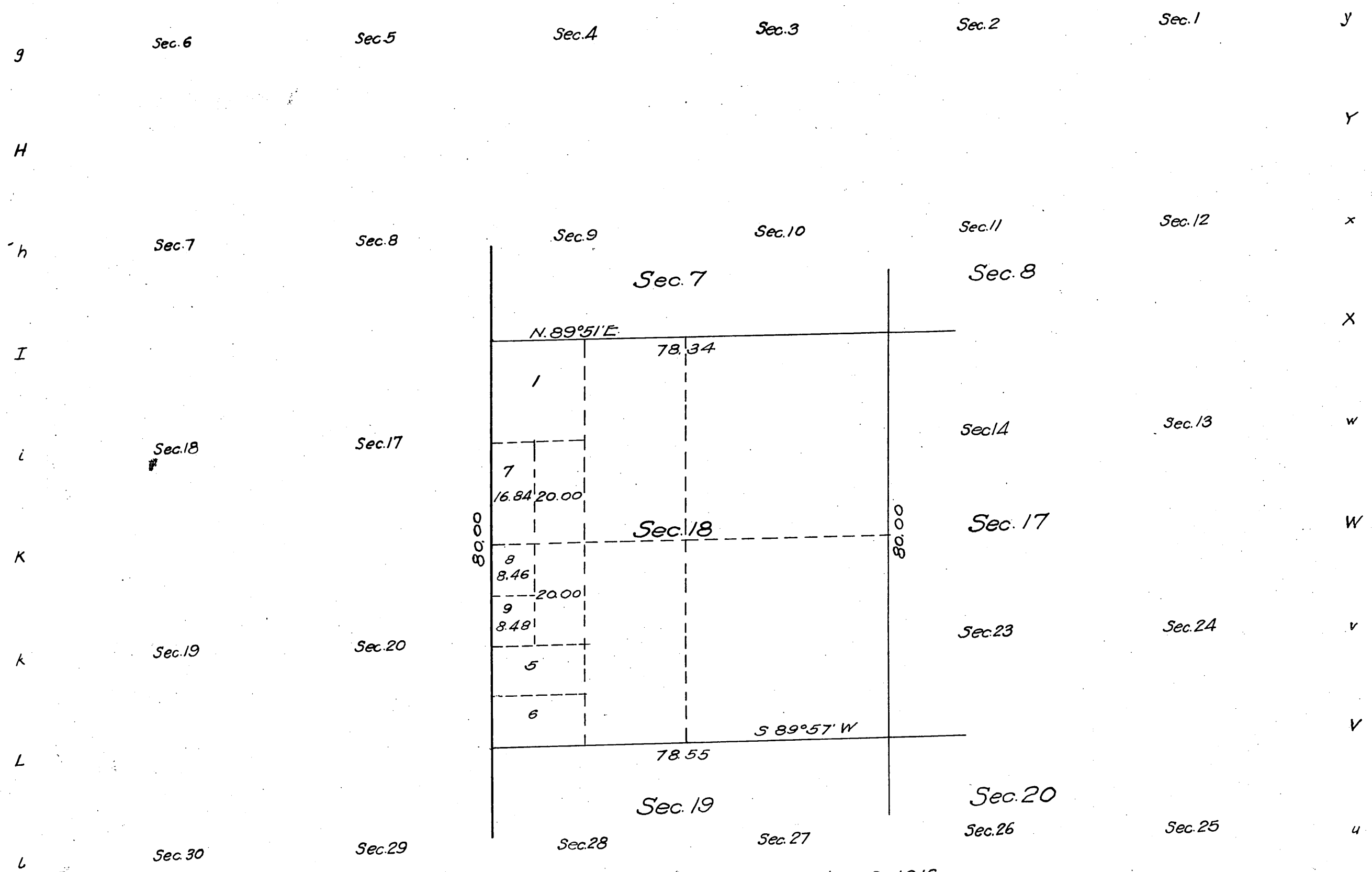
The above map of Township No _____ Range No _____ of the _____ Meridian _____ is strictly conformable to the field notes of the survey thereof on file in this office, which have been examined and approved.

U. S. Surveyor General's Office.

Surveyor General.

(4-6759)

Supplemental Plat of Section 18,
Township No 4 North, Range No 15 West, San Bernardino Meridian, California.
Scale: 20 chains = 1 inch.



filed in U.S. Land Office
Los Angeles Cal.
Dec. 4-1916 4⁰⁰ P.M.
John D. Roche
Register

Los Angeles 018795 E JAD November 9, 1916

This supplemental plat showing the subdivision of Lots 2 and 3, Section 18, T.4N, R.15W, San Bernardino Meridian, California, plat approved March 26, 1877, is made for the purpose of obtaining the area and legal description of the subdivisions thereof, to accommodate homestead entry Los Angeles 018795, of Dayton M. Furnivall, part of which embraces the SE 1/4 Lot 2, and the E 1/2 and SW 1/4 of Lot 3 of said Section, and is hereby approved.
U. S. Surveyor-General's Office,
San Francisco, California.
November 16, 1916.

Frank A. Yarell
U. S. Surveyor-General
for California

Areas in Acres.	
Public Land	
Indian Reservation	
Indian Allotments	
Mineral Claims	
Water Surface	
Total Area	

Scale 40 Chains to an inch
Mean Magnetic Declination

The above map of Township No. _____ Range No. _____ of the _____ Meridian is strictly conformable to the field notes of the survey there of on file in this office which have been examined and approved
U. S. Surveyor General's Office.

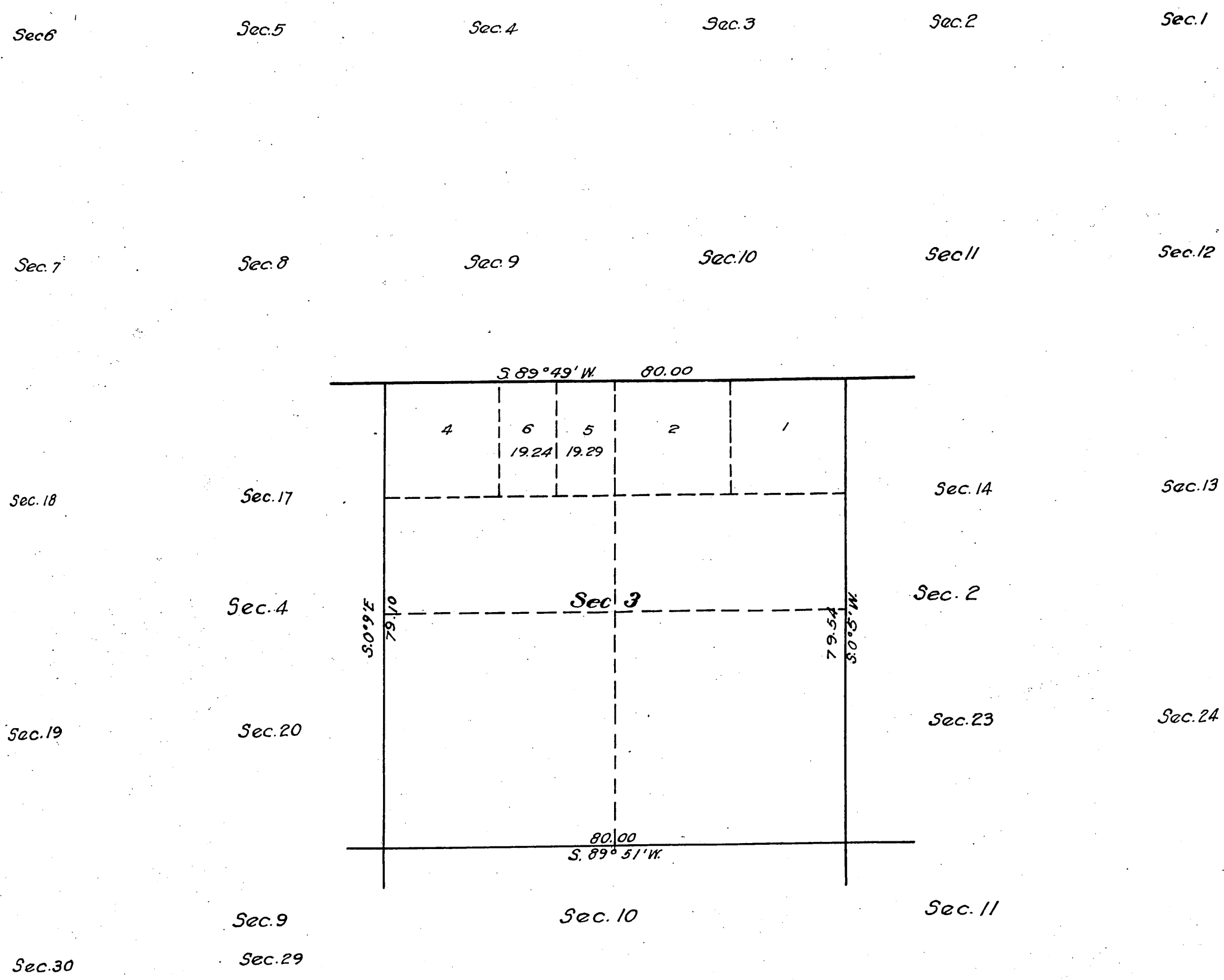
Surveyor General

Surveys Designated	By Whom Surveyed	Contract No.	Contract Date	Amount of Surveys			When Surveyed	
				Mls.	chs.	lks.	Begun	Completed

Supplemental Plat of Section 3,
Township No 4 North, Range No 15 West San Bernardino Meridian, California

RECEIVED
U. S. LAND OFFICE
LOS ANGELES, CALIF.
Date DEC - 4 1916.
Hour 10⁰⁰ a. m.

Scale: 1 inch = 20 chains.



This supplemental Plat is authorized by the
Commissioner of the General Land Office by letter
Los Angeles 024523 "E" H.K. dated Oct. 29, 1919

Filed in U. S. Land Office
Los Angeles, Cal.
Dec. 5, 1919
B. D. Groves
Register

This supplemental plat, showing the subdivision of lot 3, Section 3, T.4N., R.15W., San Bernardino Meridian California approved March 25, 1877, is made for the purpose of obtaining the area and legal description of the subdivisions thereof to accommodate homestead entries Los Angeles 011875, 024523 and 030063 of William H. Cruzan, part of which embraces a portion of above lot of said section and is hereby approved.

U.S. Surveyor General's office.
San Francisco, California
Nov. 5, 1919

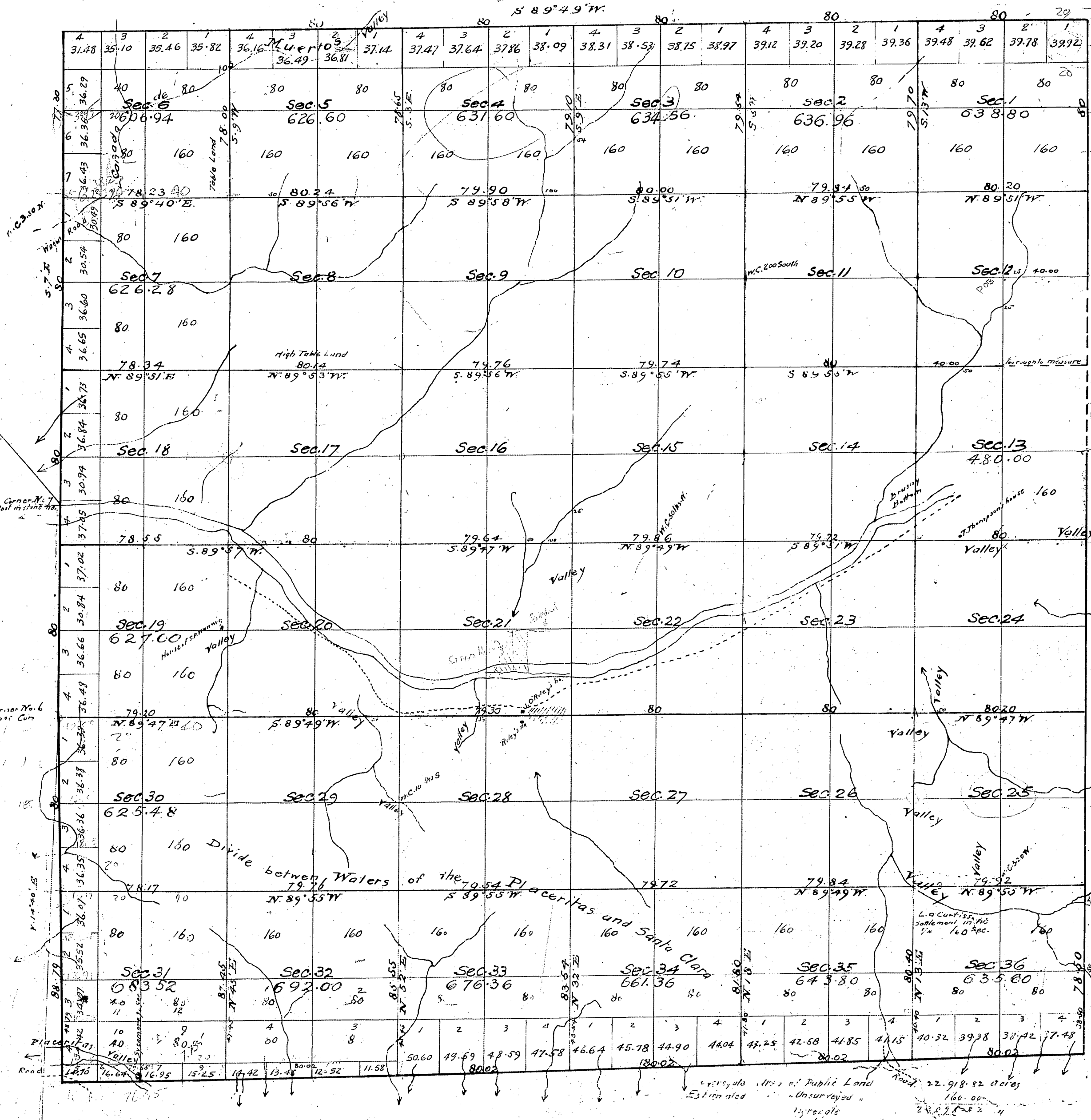
Miss H. Moore?
U. S. Surveyor General for California.

Areas in Acres	
Public Land	
Indian Reservation	
Indian Allotments	
Mineral Claims	
Water Surface	
Total Area	

0 10 20 40 80
Scale 40 Chains to an inch
Mean Magnetic Declination.....

Surveys Designated	By Whom Surveyed	Group		Amount of Surveys			When Surveyed	
		No.	Date	Mls.	chs	lks	Begun	Completed

The above map of Township No..... Range No..... of the..... Meridian..... is strictly conformable to the field notes of the survey thereof on file in this office, which have been examined and approved
U. S. Surveyor General's Office
Surveyor General.



Field notes See C.S. 9046
 Field notes E.W. + N. boundary See C.S. 9043
 See C.F. 312 for Ely line of Sec. 35
 " C.S. 9053 " " " 13
 E. line of Secs. 24-25 & 36 - C.S. 9369
 Section 26 - C.S. 9444

Yrs. reported by Norway 12-40 M.

Surveys Designated	By whom Surveyed	Date of Contract	Area of Surveys	When Surveyed
Lines colored brown	H. Hancock	February 15 th 1855		1855
South boundary of Township	M. G. Wheeler	September 4 th 1874		1874
Township line colored blue	W. G. Norway	September 19 th 1876	18 chs. 92 lks.	1876
Rest of Township lines	"	"	15 m. 23 rd 77 th	1876
Section lines colored red and uncolored	"	"	57. 41. 84	November 23 rd 1876

Signed:
 H. G. Rollins
 U.S. Surveyor General Cal.

43560

