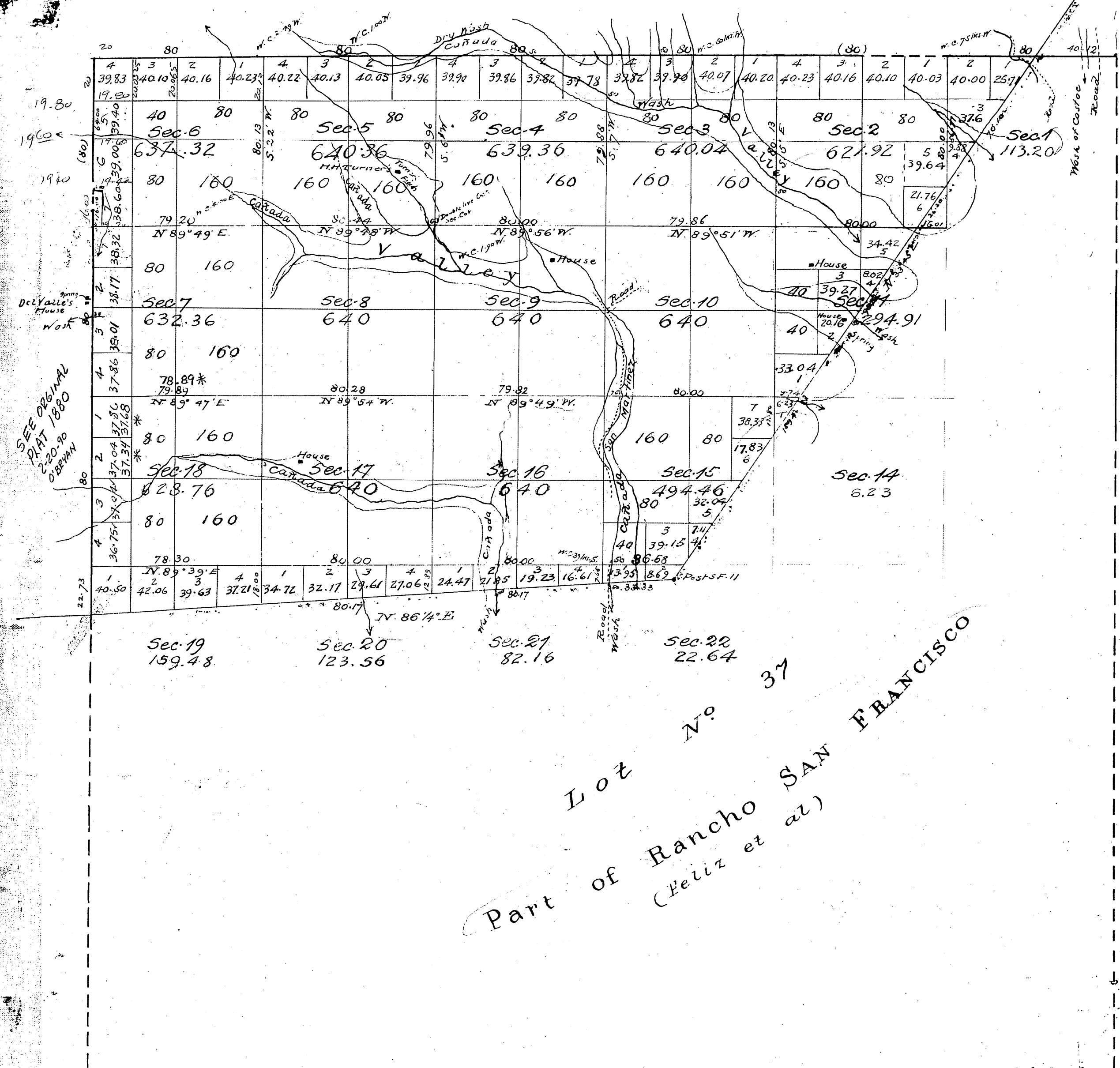


T4N
R17W
①

Township N° 4 North, Range N° 17 West, San Bernardino Meridian.



Lot No 37
Part of Rancho SAN FRANCISCO
(Heliz et al)

Surveys Designated	By whom Surveyed	Date of Control	Amt. of Survey	When Surveyed
Part of East boundary of T. 4 N.	R. W. Morris	Oct. 12 th 1853		1854
Boundaries of Lot No 37	H. Hancock and G. M. Thompson	(Inst) Sept 1 st 1858 May 28 th 1874		1858 1874
Township lines colored blue	Geo. S. Collins	October 24 th 1879	2 m. 00 chs. oak.	1879
Rest of Township lines	"	"	7. 22. 73.	1879
Rancho lines - resurveyed	"	"	7. 5. 72.	1879
Section lines colored blue	"	"	3. 44. 29.	1880
Connections " red	"	"	39. 83.	1880
Rest of Section lines	"	"	21. 50. 36.	January 10 th 1880

aggregates area of Public Lands Surveyed 8936.76 acres
Estimated " Private Grants 6973.64
Aggregate 22910.40 "

(All lines pass over Mountainous Land)
G.S. 9105 interior Edys. see sketch attached
Rancho lines of the Rancho San Francisco - G.S. 9216
C.S. 9216
Signed Bdy. line of the San Gabriel National Forest - G.S. 9309
Theo Wagner
U.S. Surv. Genl. Calif.