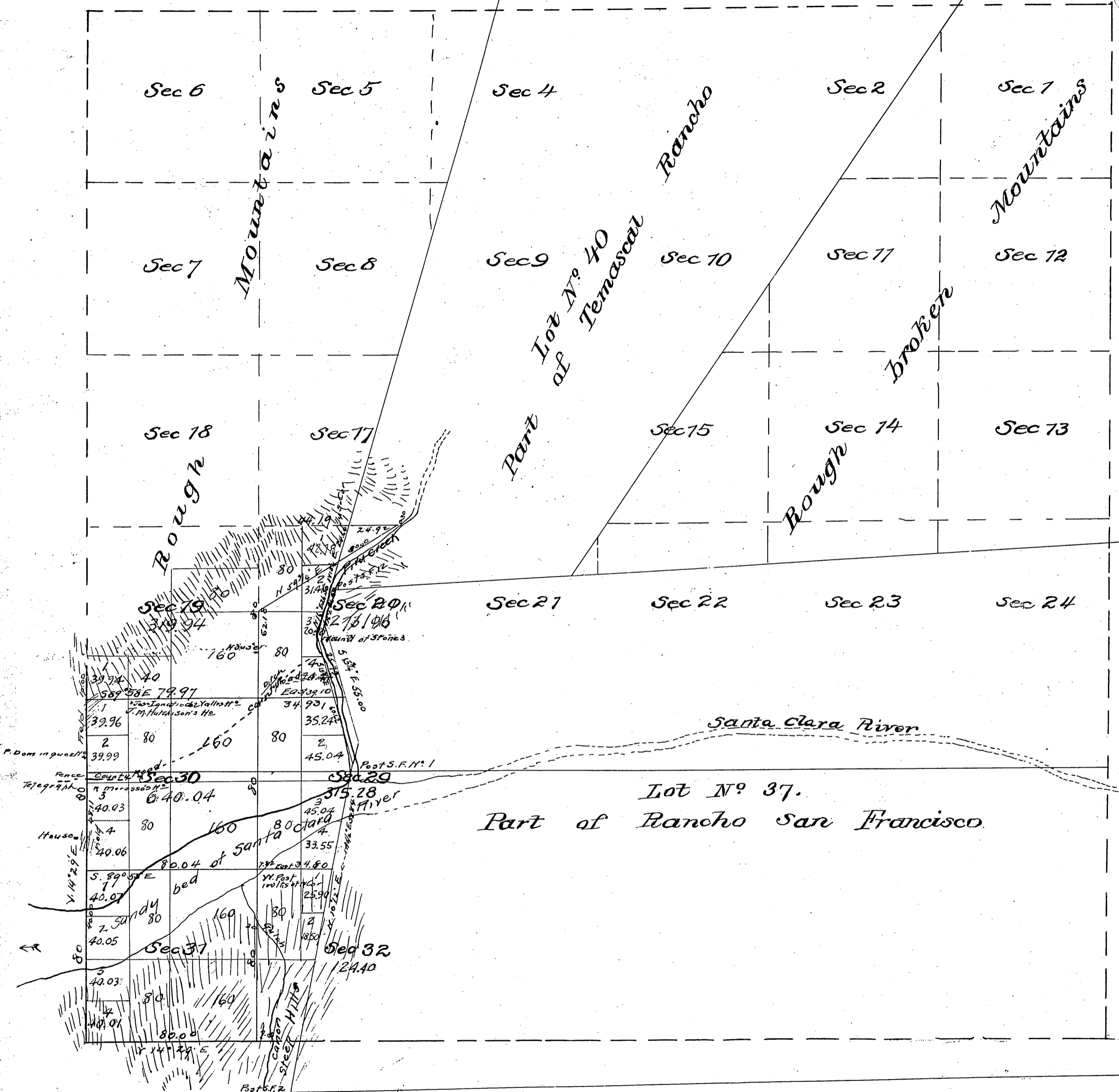
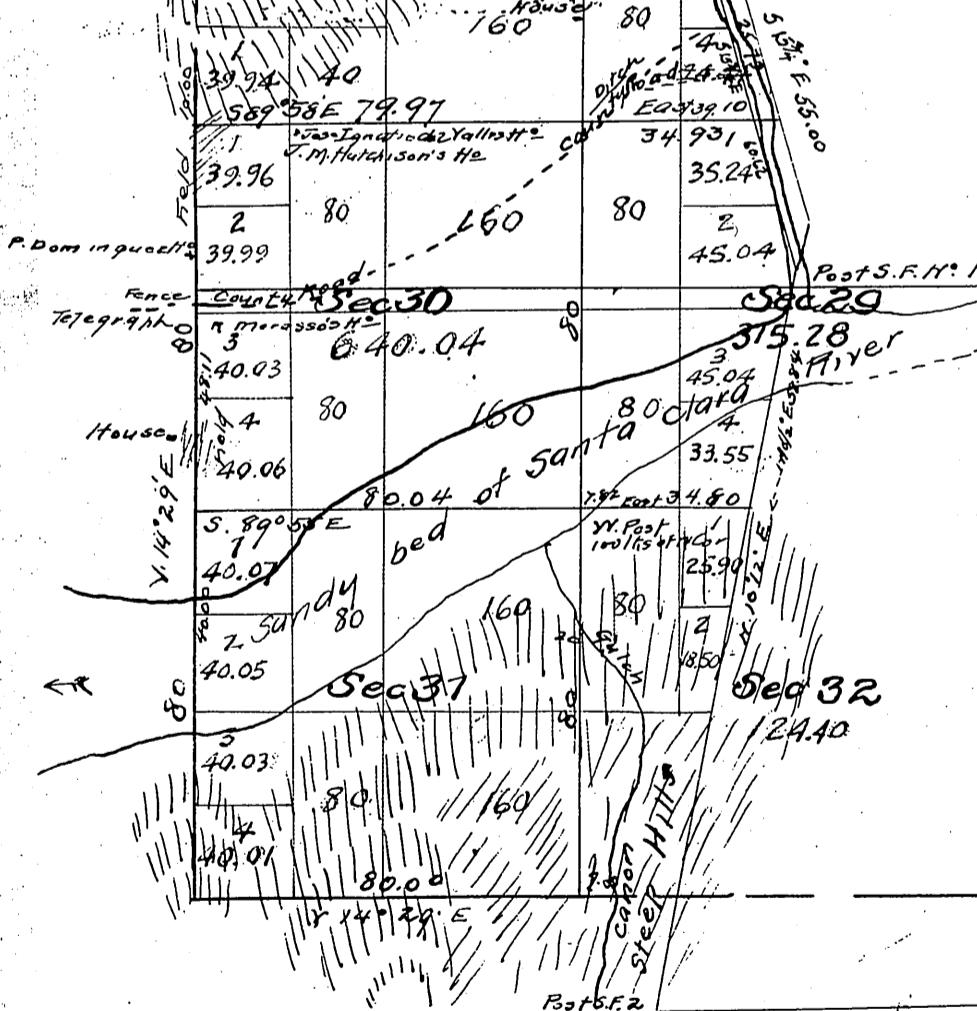


Township N° 4 North, Range N° 18 West, San Bernardino Meridian.



Filed in U.S. Land Office  
Los Angeles Cal. December 18<sup>th</sup> 1874.

Aggregate Area of Public Land surveyed 2,918.70  
Estimate area of Private Grant and unsurveyed Mountain land 20,720.00  
Aggregate 23,638.70



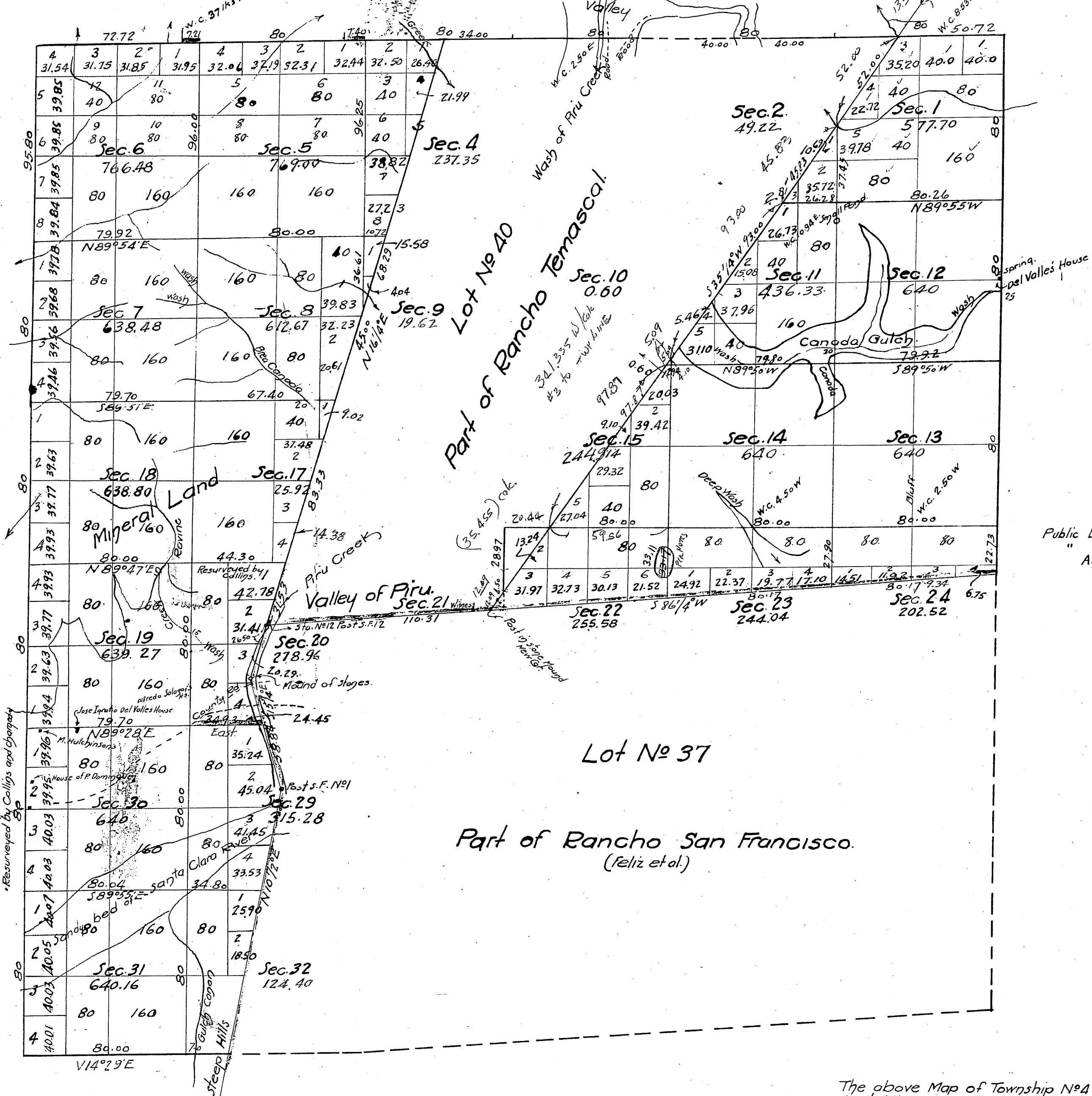
Post of 2  
Nails 500 chains from Lane Oak on Summit of Ridge

Surveys Designated	By whom Surveyed	Date of Contract	amt of Surveys	When Surveyed
Lines colored yellow	J. F. Harris	October 12 <sup>th</sup> 1853		1854
Boundaries of Lot N° 37	Henry Hancock	Inst. Sept 1 <sup>st</sup> 1858		1858
"    "    "    38	G. H. Thompson	Inst. 1794 6 <sup>th</sup> 1867		1867
Township lines colored green	H. S. Craver	November 6 <sup>th</sup> 1873	3 m. 7 chs 00 lks.	1874
Private Quilted scal. green resurveyed	"	"	2 " 4 " 94 "	1874
Section lines colored green	"	"	6 " 39 " 09 "	17 <sup>th</sup> day 2 <sup>nd</sup> 1874
Boundaries of Lot N° 37 colored red resurveyed	G. H. Thompson	Inst. 1794 28 <sup>th</sup> 1874		Jan 1874
Section line colored red resurveyed	"	"		1874

C.S. 9105 for Bays to Sec. 1, 12, 13, 2 see sketch attached.  
Bdy. line of the San Gabriel National Forest - C.S. 9389  
The above map of Township N° 4 North Range 18 West San Bernardino Meridian is strictly conformable to the field notes of the surveys on file in this office which have been examined and approved.  
San Francisco California  
November 21<sup>st</sup> 1874.

Township No 4 North Range No 18 West San Bernardino Meridian.

T4N  
R18W  
(2)



Public Land surveyed by Craven & Thompson	2,318.78 Acres.
Collins	8,382.68 "
Aggregate Area of Public Land.	10,701.46 "
Estimated Private Grants	12,712.74 "
" unsurveyed Land	94.60 "
Aggregate	23,509.00 "

All the Exterior and Section Lines of this Township surveyed by Collins, excepting those colored blue, pass over Mountainous Land.

Lot No 37  
Part of Rancho San Francisco.  
(feliz et al.)

The above Map of Township No 4 North, Range No 18 West San Bernardino Meridian is strictly conformable to the field notes of the surveys thereof on file in this office which have been examined and approved.  
San Francisco California  
July 17th 1880.

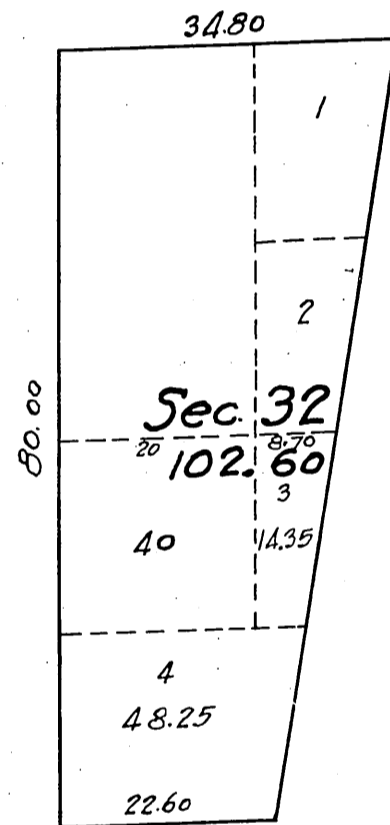
Surv Genl. Cal.

Survey's Designated	By Whom Surveyed	Date of Contract	Amt. of Surveys.	When surveyed.
Township lines colored yellow	R. W. Norris	Oct. 12th 1853		1854
Boundaries of lot No 37	H. Hancock	(1st) Sept 1st 1858		1858
" " " " " 40	G. H. Thompson	" May 6th 1867		1867
Lines colored green	H. S. Craven	Nov. 6th 1873		1874
" " brown	G. H. Thompson	(1st) May 23rd 1874		1874
Township lines colored blue	Geo. S. Collins	October 21st 1879	3 mls. 00 chs. 00 lks.	1879
Rest of Township lines	" "	" "	11 " 31 " 25 "	1879
Ranch lines colored blue resurveyed.	" "	" "	12 " 37 " 10 "	1879
Section lines "	" "	" "	5 " 35 " 81 "	1880
Rest of Section lines.	" "	" "	17 " 75 " 82 "	1880
Connections colored red.	" "	" "	58 " 23 "	Januar, 20th 1880

Supplemental Diagram  
of

Fractional Section 32 Township N<sup>o</sup> 4 North, Range N<sup>o</sup> 18 West, San Bernardino Meridian California.

Scale 20 chains to 1 inch.



Filed in U.S. Land Office  
Los Angeles Cal.  
March 3-1910

Frank Burnen  
Register

I hereby certify that the above supplemental diagram correctly shows the lot numbers and areas of the unreturned portion of Fractional Section 32 Township N<sup>o</sup> 4 North, Range N<sup>o</sup> 18 West San Bernardino Meridian, California, made in accordance with instructions contained in Department letter "E" dated August 17, 1909, and is strictly conformable to the field notes of survey on file in this office.

U. S. Surveyor General's Office.

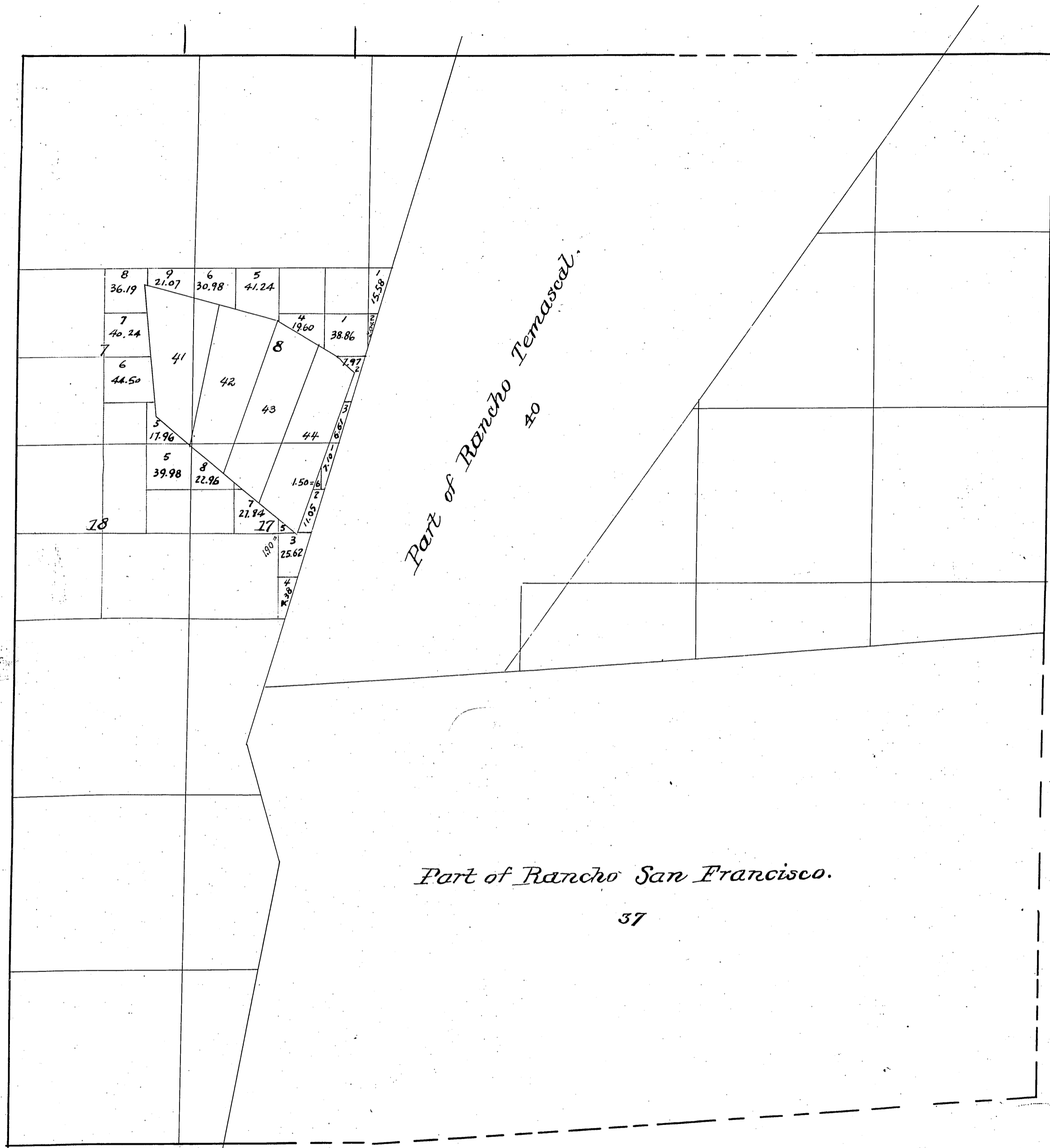
San Francisco, California.

September 16, 1909.

W. S. Graham

U. S. Surveyor-General for California

Township N<sup>o</sup> 4 North. Range N<sup>o</sup> 18 West. San Bernardino Meridian.



- 37 Rancho San Francisco.
- 40 Rancho Temascal.
- 41 Peru Oil Mine.
- 42 Probarito Oil Mine.
- 43 Santa Clara Oil Mine.
- 44 San Francisco Oil Mine.

Amended Plat.

Part of Rancho San Francisco.

37

The above Diagram of Township No. 4 North, Range No. 18 West San Bernardino Meridian correctly Shows the amendments made in accordance with the plats of Mining Surveys approved to date  
 U.S. Surveyor General's Office  
 San Francisco, California  
 Nov. 23, 1881

*Phillip Wagner*  
 Surv. Gen. Cal.