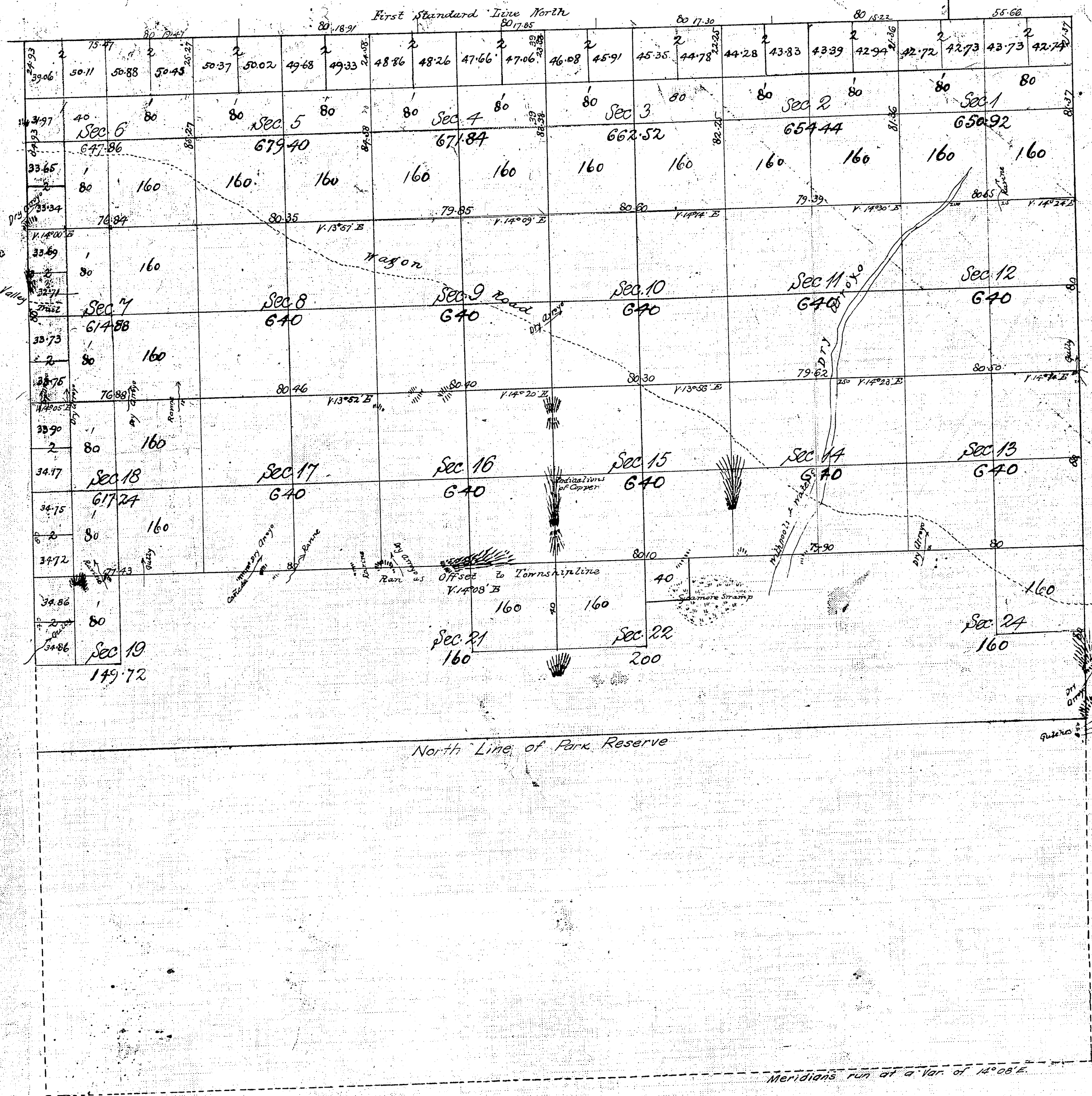


Township No 5 North, Range 10 West of the San Bernardino Meridian.

T. 5 N.  
R. 10 W.  
①



Gov. Field notes Sections 4, 5, 6, 8, 9, 10, 13, 14, 15, 24 See C. S. 9026  
Gov. Field notes East half north and north half of east boundary of Township See C. S. No. 9033

Surveys Designated	By whom Surveyed	Date of Contract	Amount of Surveys	
			Miles	Square Miles
North boundary of Township	Ralph W. Norris	October 12 <sup>th</sup> 1853	5 71 66	1853
East of Township lines	Henry Hancock	February 15 <sup>th</sup> 1855	6 54 80	1855
Section lines as offset	" "	" "	5 77 49	"
Rest of Section lines	" "	" "	27 52 69	"

Aggregate Area of Public Lands surveyed 12, 228.82 Acres  
Estimated Area of Mountain Lands unsurveyed 10, 828.60 "  
Aggregate 23, 057.42 "

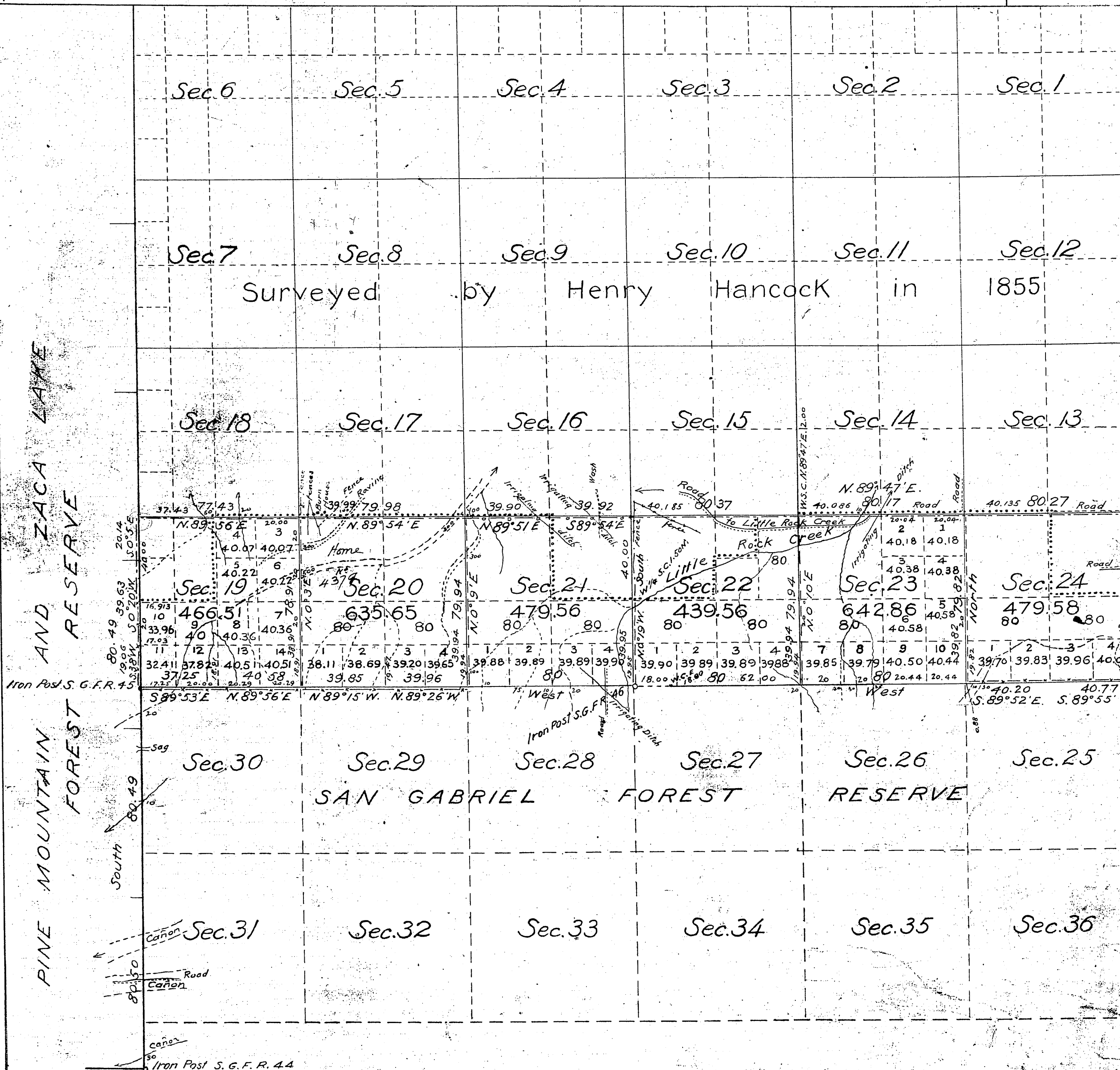
Signed: John C. Hays  
Surv. Gen'l. Cal.

~~TOWNSHIP 5 NORTH, RANGE 10 WEST, SAN BERNARDINO MERIDIAN, CALIFORNIA.~~ T. 5 N.  
~~SUPPLEMENTAL PLAT OF SECTION 2~~ R. 10 W.

See 35  
See 36  
FIRST STANDARD PARALLEL NORTH  
WEST

⑤

Township N<sup>o</sup> 5 North, Range N<sup>o</sup> 11 West, San Bernardino Meridian California



Area of Public Land previously surveyed 12,268.82 Acres  
 " " " " surveyed by Friel 3,143.72  
 Total Area of Public Land Surveyed 15,412.54 Acres  
 Estimated Area of Un-surveyed Land 7,648.00  
 Aggregate 23,060.54

NOTE: All of the unsurveyed portion of this Township lies within the boundaries of the San Gabriel Forest Reserve.  
 NOTE: Lot numbers in the S 1/2 of S 1/2 of Section 23 have been corrected on this plat. For authority see copy of letter from General Land Office, Washington, D.C., in D: 91-92 Co. Sur. Mar. 30, 1933.

Filed in U.S. Land Office  
 Los Angeles, Cal. June 25, 1904  
 A. J. Crookshank  
 Register

The line of demarcation between the areas previously counted in total acreage surveyed and the new surveys is designated thus: - - - - -  
 C.S. 9212 N&E line of Secs. 19, 20, 21, 22, 23 & 24  
 C.S. 9213 East line of Secs. 1, 12, 13 & 24 & S. 1/2 of line of 13, 14 & 15  
 Part of Interior Sec. lines C.S. 9339  
 San Gabriel Forest Reserve Bdy. by Cutting - C.S. 9400.

Latitude 34° 31' North  
 Longitude 118° 00' West } near cor. of Secs. 13, 14, 23 and 24  
 Magnetic Declination 15° 00' East

The above Map of Township N<sup>o</sup> 5 North, Range N<sup>o</sup> 11 West, San Bernardino Meridian, California, is strictly conformable to the field notes of the surveys thereof, on file in this Office which have been examined and approved.

U.S. Surveyor-General's Office  
 San Francisco, California  
 December 5, 1903

W. S. Graham  
 U.S. Surveyor-General for Calif.

Surveys Designated	By whom Surveyed	Contract			When Surveyed
		No.	Date	Amount of Surveys Mls. Chs. Lks.	
Lines previously surveyed, exhibited on Map approved March 19, 1856 and December 11, 1893.					
Bdies. of San Gabriel Forest Reserve	H. L. Cutting	126	Feb. 24, 1896	38 83	1896
Part of W. Bdy. of Tp. Re-traced	Legend Friel	189	May 27, 1902	40 00	1903
Part of W. Bdy. of Tp. Re-surveyed	"	"	"	1 00 26	"
Part of E. Bdy. of Tp. Re-traced	"	"	"	5 38 22	"
Section Lines, Re-surveyed	"	"	"	2 78 61	"
Section Lines, Re-traced	"	"	"	Not charged	"
Section Lines, Re-traced	"	"	"	4 39 56	May 18, 1903
Section Lines, New	"	"	"	85	"
Connecting Lines	"	"	"		"

