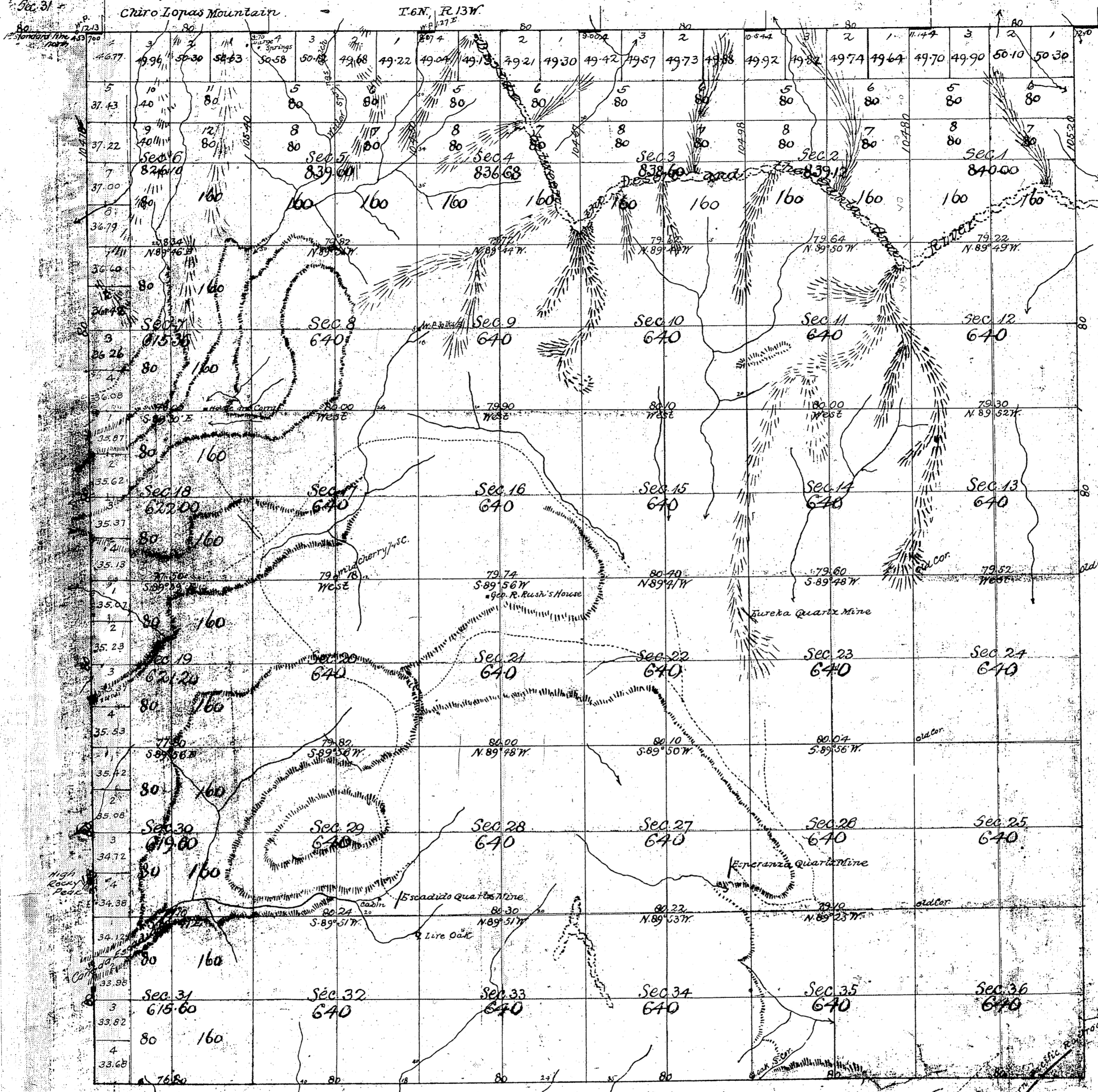


Township No 5 North, Range No 13 West, San Bernardino Meridian.

T 5 N
R 13 W
①



By whom Surveyed	Date of Conveyance	Area of Survey	Year Surveyed
Henry Hancock	February 15, 1855	6239.04 acs.	1855 & 1856
W. Norway	October 10, 1879	17874.82 acs.	1879
		14.40 acs.	1879
		1.00 acs.	1879
		54.30 acs.	1879
		1.70 acs.	1879
		67.95 acs.	December 7, 1879

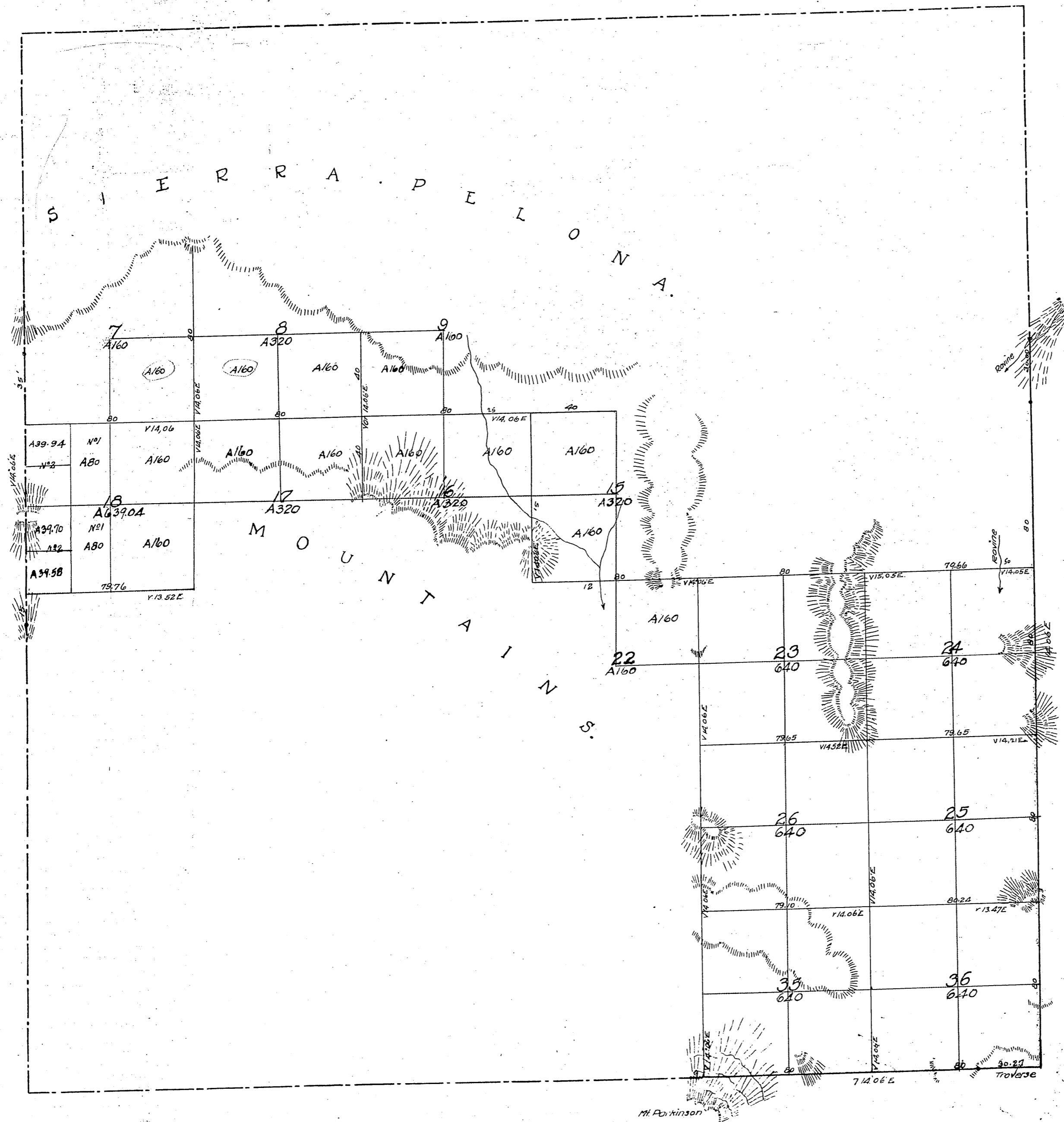
Gov. Field Notes
C.S. 9036 - All of S.B. of Twp.
C.S. 9096 - E. & W. B's and Subdivisions

Used by Norway 14th 25th East.

Area of Public Land surveyed by Hancock 6239.04 acs.
Norway 17874.82 "
Aggregate 24113.86 "

Signed
I. H. Wagner
Surveyor

Township No V North Range No XIII West San Bernardino Meridian.



Aggregate Area of Public Lands Surveyed 6233.04 Acres.
Estimated " Mountains " not Surveyed 1803.68 "
Aggregate 24258.72

Township lines colored Drown Run by H. Hancock in sectioning.

Surveys Designated.	By Whom Surveyed.	Date of Contract.	Amount of Surveys			When Surveyed.
			Miles.	Chs.	Rs.	
Township Lines.	Henry Hancock	Feb. 13 th 1855	7	55	73	1856
Traverse			0	30	27	1855
Section Lines.			21	38	06	1856

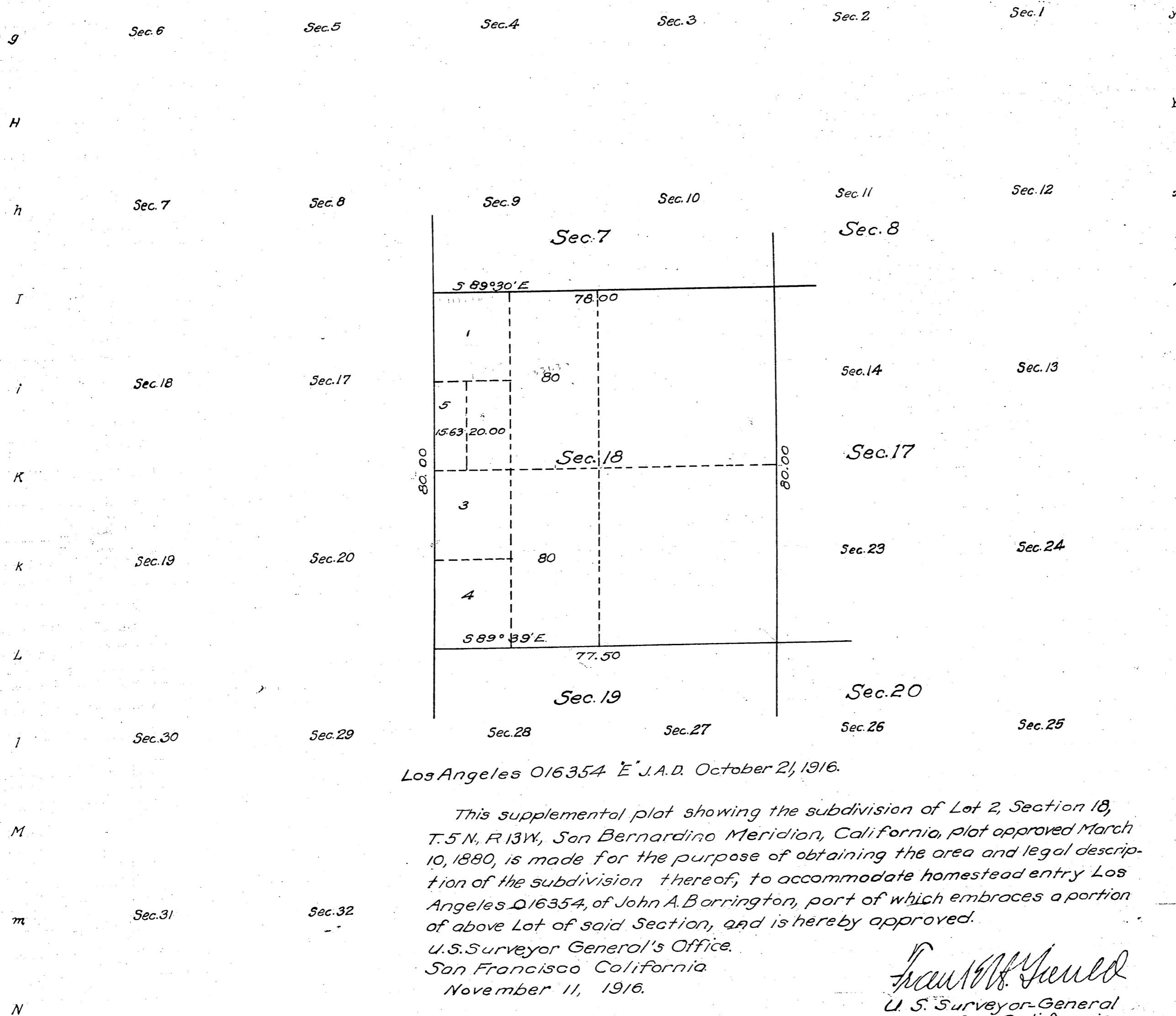
The above map of Township No 5 North Range No 13 West San Bernardino Meridian is strictly conformable to the field notes of the surveys thereof on file in this office which have been examined and approved.
Surveyor General's Office.
San Francisco California.
July 25th 1856.

John Collins

Supplemental Plat of Section 18,
Township No. 5 North, Range No. 13 West San Bernardino Meridian, California.

G F F e E d D c c b B a A

Scale: 20 chains = 1 inch



Los Angeles 016354 E J.A.D. October 21, 1916.

This supplemental plat showing the subdivision of Lot 2, Section 18, T.5 N., R.13 W., San Bernardino Meridian, California, plat approved March 10, 1880, is made for the purpose of obtaining the area and legal description of the subdivision thereof, to accommodate homestead entry Los Angeles 016354, of John A. Barrington, part of which embraces a portion of above Lot of said Section, and is hereby approved.

U.S. Surveyor General's Office.
San Francisco California
November 11, 1916.

Frank W. Jewell
U. S. Surveyor-General
for California.

Filed in U. S. Land Office
Los Angeles Cal. 00
Dec. 15-1916 9^{am}
John D. Roche
Register.

Areas in Acres.	
Public Land	
Indian Reservation	
Indian Allotments	
Mineral Claims	
Water Surface	
Total Area	

Scale 40 Chains to an inch.
Mean Magnetic Declination.

Surveys Designated.	By Whom Surveyed.	Contract.		Amount of Surveys. Mls. chs. lks.	When Surveyed	
		No.	Date.		Begun.	Completed.

The above map of Township No. 5 North, Range No. 13 West of the San Bernardino Meridian is strictly conformable to the field notes of the survey thereof on file in this office which have been examined and approved.
U. S. Surveyor General's Office.

