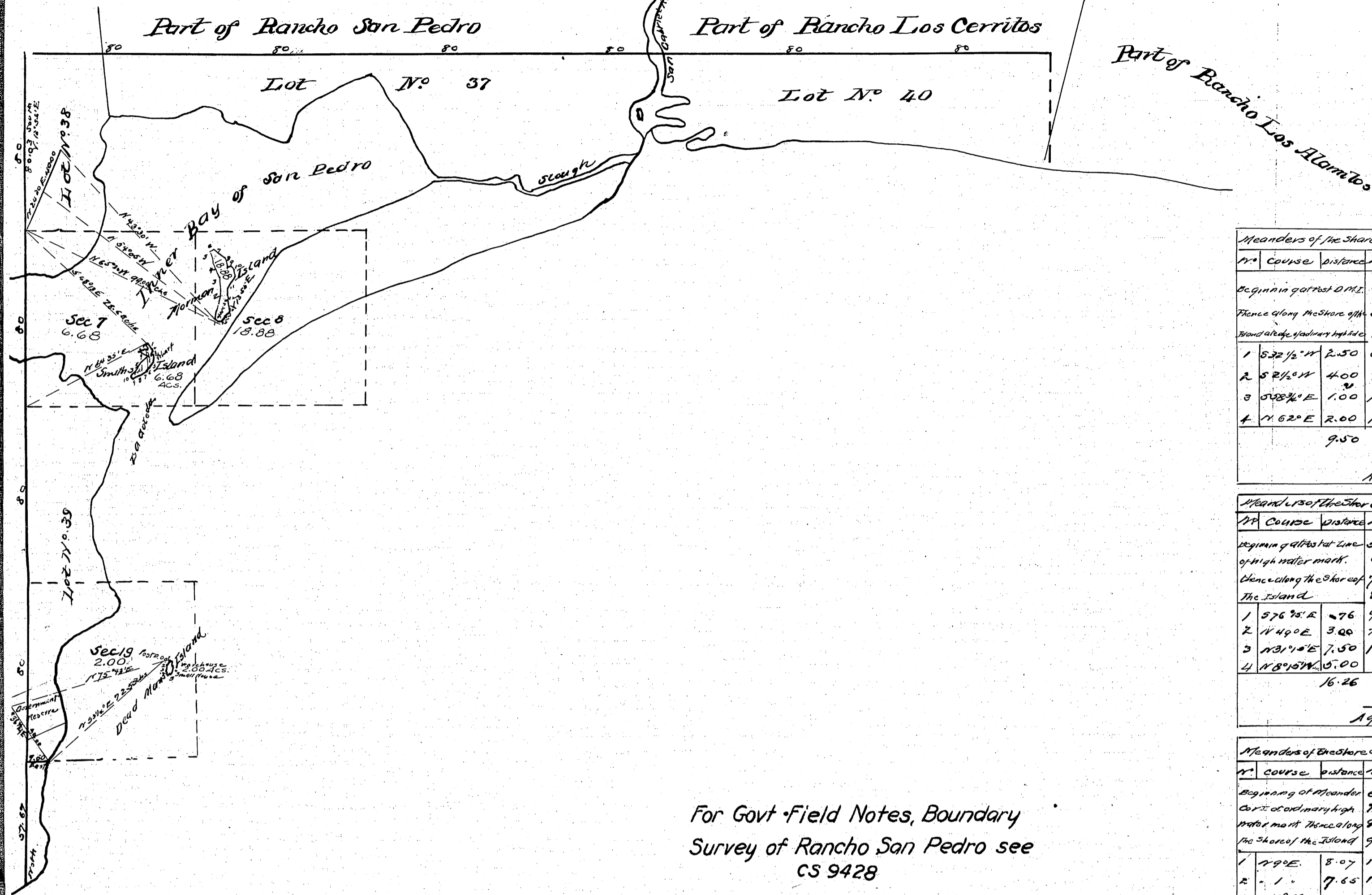


Fractional Township N^o 5 South, Range N^o 13 West, San Bernardino Meridian.

T 5 S
R 13 W
①



| N ^o | Course | Distance | N ^o | Course | Distance |
|------------------------|-------------|----------|----------------|--------|----------|
| 5 | N 30 3/4° E | 1.00 | | | |
| 6 | N 18 1/2° E | 1.00 | | | |
| 7 | N 30° E | 0.80 | | | |
| 8 | N 50° W | 1.00 | | | |
| 9 | N 10° W | 3.00 | | | |
| 10 | N 75° W | 1.54 | | | |
| 11 | S 49 1/2° W | 0.69 | | | |
| | | 9.50 | | | 9.03 |
| | | | | | 9.50 |
| Aggregate 18.53 Chains | | | | | |

| N ^o | Course | Distance | N ^o | Course | Distance |
|------------------------|------------|----------|----------------|--------|----------|
| 5 | N 68 30' W | 3.50 | | | |
| 6 | S 41 45' W | 2.25 | | | |
| 7 | S 73° W | 4.00 | | | |
| 8 | S 66° E | 5.00 | | | |
| 9 | S 38 30' W | 12.00 | | | |
| 10 | S 50 45' E | 7.50 | | | |
| 11 | N 66° E | 3.20 | | | |
| 12 | N 8° 15' W | 5.00 | | | |
| | | 16.26 | | | 33.03 |
| | | | | | 16.26 |
| Aggregate 49.29 Chains | | | | | |

| N ^o | Course | Distance | N ^o | Course | Distance |
|------------------------|-------------|----------|----------------|--------|----------|
| 6 | N 7 1/4° E | 1.50 | | | |
| 7 | S 58° " | 3.50 | | | |
| 8 | " 16 1/2° " | 2.88 | | | |
| 9 | " 60 1/2° " | 4.00 | | | |
| 10 | " 22 1/2° " | 3.14 | | | |
| 11 | " 30 1/2° W | 9.00 | | | |
| 12 | " 7° E | 10.00 | | | |
| 13 | " 49 1/2° " | 6.07 | | | |
| 14 | " 65° " | 2.15 | | | |
| | | 32.16 | | | 45.24 |
| | | | | | 32.16 |
| Aggregate 77.40 Chains | | | | | |

For Govt. Field Notes, Boundary Survey of Rancho San Pedro see CS 9428

For Govt. Field Notes, Boundary Survey of Rancho Los Palos Verdes see CS 9427.

For Govt. Field Notes - Boundary of Ro. Los Cerritos, see C.S. 9430

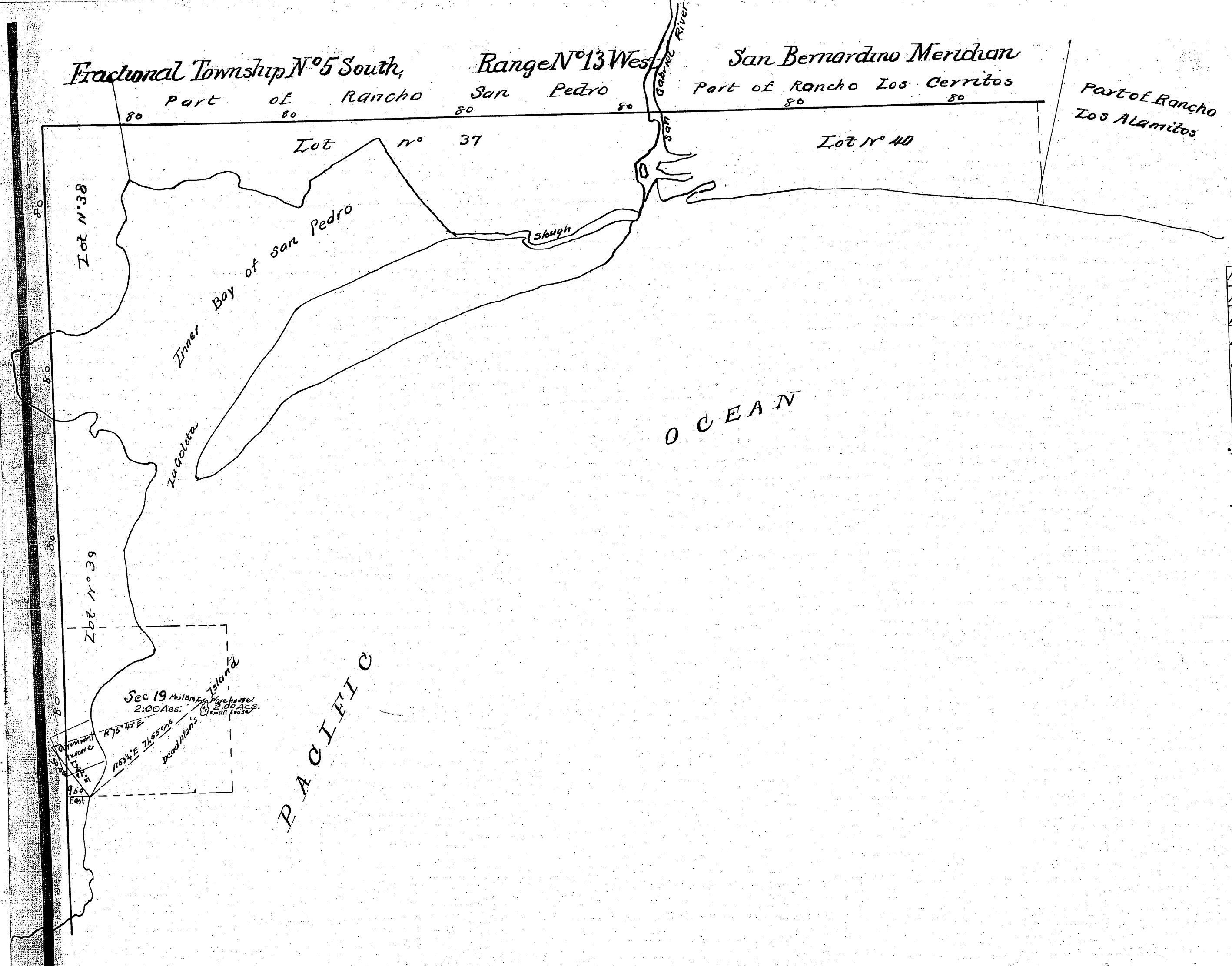
Area of Public Land surveyed by Thompson 2.00 Acres
 Goldsmithy 6.68 "
 Norway 18.88 "

Aggregate Area of Public Land Surveyed 27.56
 Estimated Private Grants and Inner Bay of San Pedro 497.44
 Aggregate 480.00

Magnetic Variation 14° 16' East.

| Surveys Designated | By whom Surveyed | Date of Contract | Amount of Surveys | When Surveyed |
|----------------------------------------|------------------|---------------------------------------------|-----------------------|---------------------------------|
| North Boundary of Township | Henry Hancock | January 31 st 1853 | | 1853 |
| West " | " | February 15 th 1855 | | 1855 |
| Boundaries of Rancho San Pedro | " | Instructions December 11 th 1857 | | 1857 |
| " " Los Palos Verdes | " | " September 1 st 1858 | | 1858 |
| " " Los Alamos | " | " September 1 st 1858 | | 1858 |
| " " Los Cerritos | " | " September 1 st 1858 | | 1866 |
| Lines shaded red | G.H. Thompson | " September 1 st 1868 | 7 mds. 17 chs. 17 1/2 | 1868 |
| Meanders of shore of Dead Man's Island | " | " | 0 18 53 | September 15 th 1868 |
| Meanders of shore of Smith's Island | John Goldsmithy | Instructions August 15 th 1871 | | October 28 th 1871 |
| Connecting line with Smith's Island | A. Booth | Instructions November 18 th 1878 | | April 15 th 1878 |
| Lines colored blue | W.H. Norway | March 10 th 1880 | 7 mds. 40 chs. 03 1/2 | 1880 |
| Meanders of shore of Mormon Island | " | " | 77 40 | May 24 th 1880 |

T55
R13W
②



| n° | Course | Distance | n° | Course | Distance |
|---------------------|-----------------------------------|----------|----|-------------|----------|
| | Beginning at the D.M.S. E. corner | | 5 | N 50 1/2° E | 1.00 |
| | Along the shore of the Island | | 6 | N 18 1/4° E | 1.00 |
| | at edge of ordinary high tide | | 7 | N 75° E | 0.80 |
| 1 | S 32 1/2° W | 2.50 | 8 | N 50° W | 1.00 |
| 2 | S 2 1/2° W | 4.00 | 9 | N 10 1/4° | 3.00 |
| 3 | S 58 3/4° E | 1.00 | 10 | N 75° W | 1.54 |
| 4 | N 62° E | 2.00 | 11 | S 49 1/2° W | 2.69 |
| | | 9.50 | | | 9.03 |
| | | | | | 9.50 |
| Aggregate 18.53 chs | | | | | |

For Govt. Field Notes, Boundary Survey
of Rancho San Pedro see CS 9428

For Govt. Field Notes, Boundary Survey of
Rancho Los Palos Verdes see CS 9427

Port. of W bdy of T. 5 S. R. 14 W. - C. S. 9335

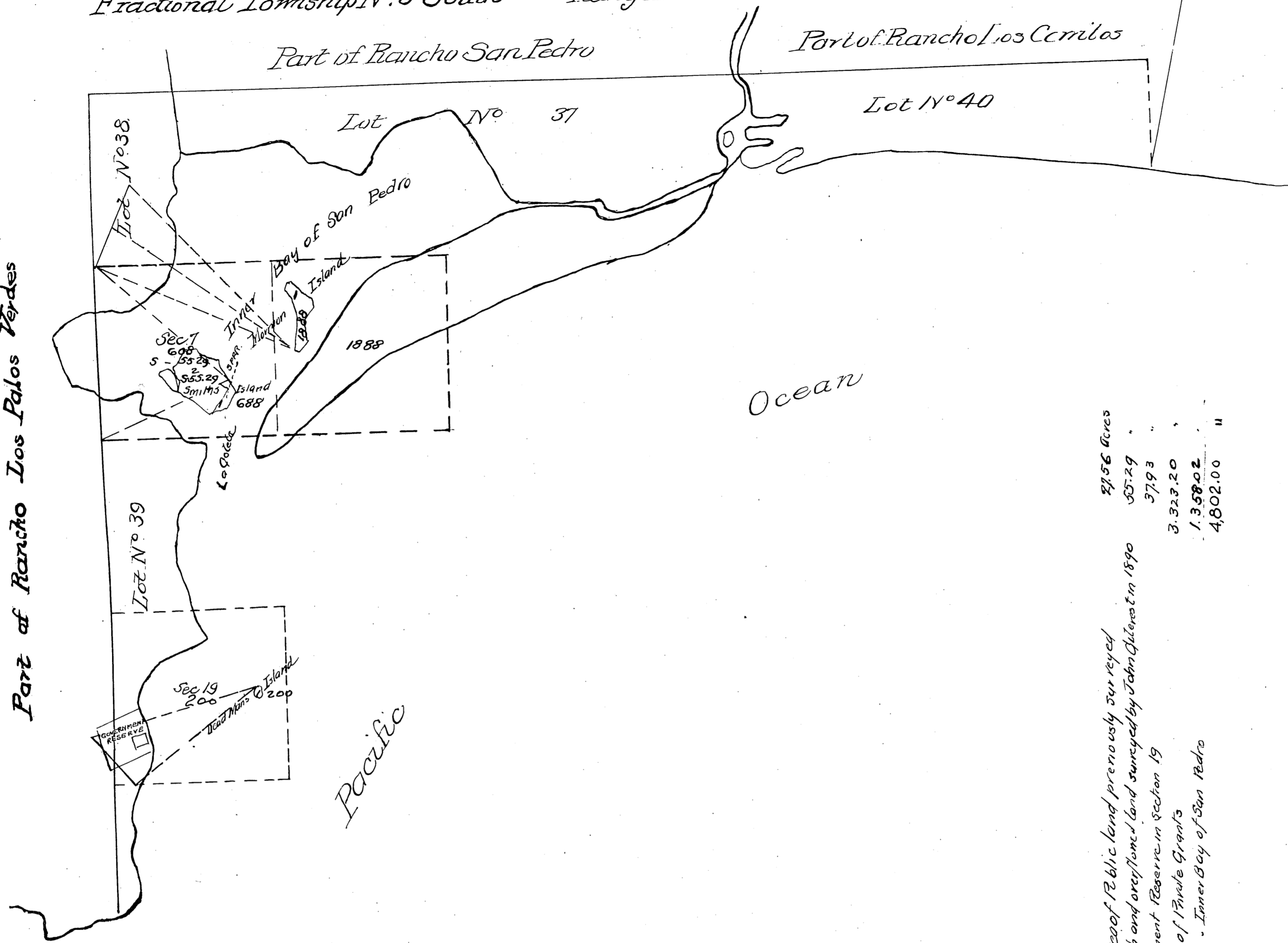
For Govt. Field Notes - Boundary
of Ro. Los Cerritos, see C. S. 9430

| Surveys Designated | By Whom Surveyed | Date of Contract | Amount of Surveys | When Surveyed |
|----------------------------------------|------------------|---------------------------------------------|----------------------------------|---------------------------------|
| North boundary of Township | Henry Hancock | January 31 st 1853 | | 1853 |
| West " | " | February 16 th 1855 | | 1855 |
| Boundaries of Rancho San Pedro | " | Instructions December 11 th 1857 | | 1857 |
| " " Los Palos Verdes | " | September 1 st 1858 | | 1858 |
| " " Los Alamitos | " | September 1 st 1858 | | 1858 |
| " " Los Cerritos | " | September 1 st 1858 | | 1858 |
| Lines shaded red | G. H. Thompson | September 1 st 1868 | 1 Mile 1764 ³ 17 Lks. | 1868 |
| Meanders of shore of Dead Man's Island | " | " | 0 - 18 - 53 | September 15 th 1868 |

Fractional Township N^o 5 South Range N^o 13 West San Bernardino Meridian

T 5 S
R 13 W
③

Part of Rancho Los Palos Verdes

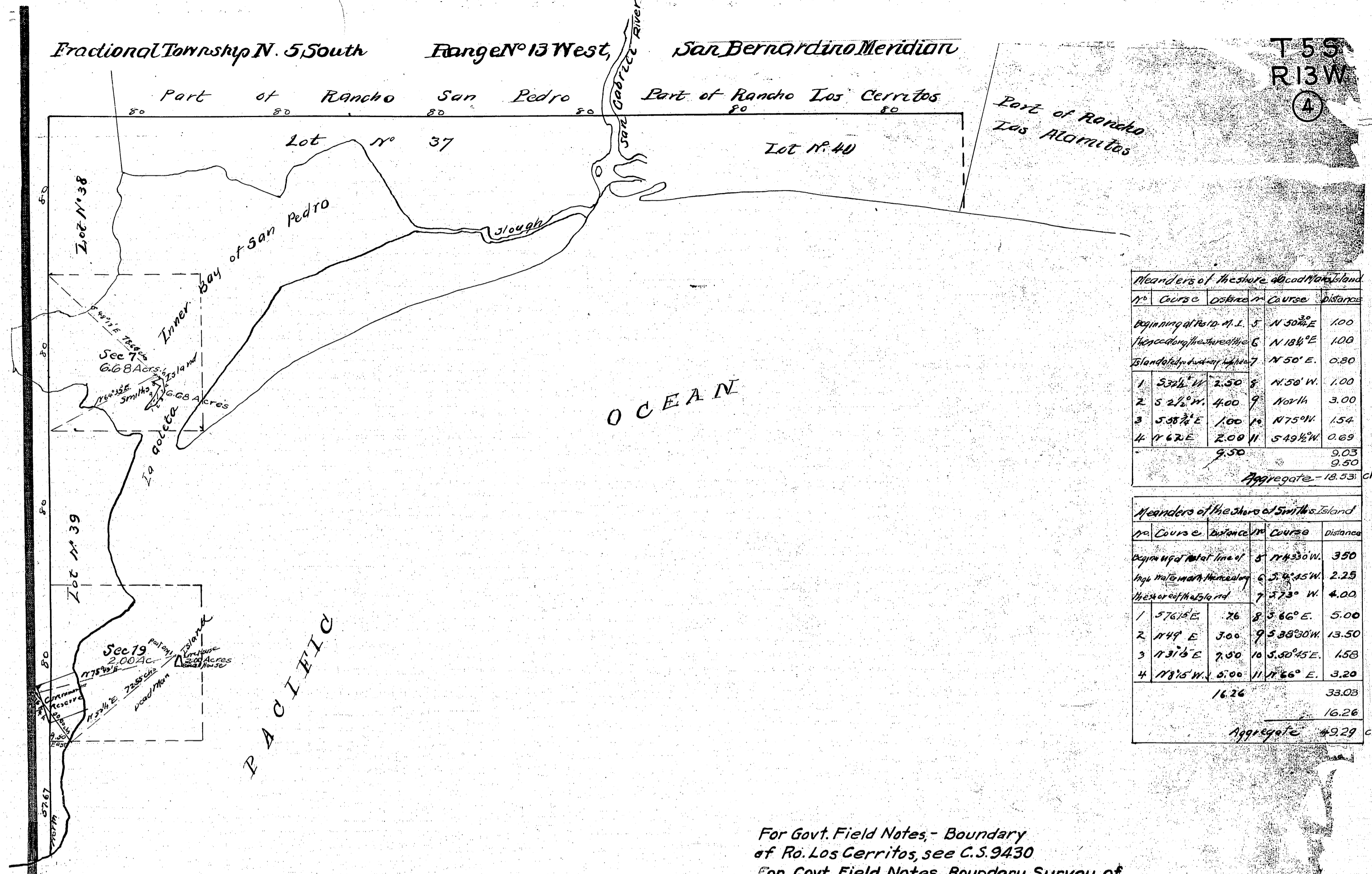


2756 Acres
 55.29
 379.3
 3,323.20
 1,358.02
 4,802.00 "

Aggregate Area of Public land previously surveyed
 Area of swamp and overflowed land surveyed by John Chiswell in 1890
 Government Reserve in Section 19
 Estimated Area of Private Grants
 " " Inner Bay of San Pedro
 Aggregate

For Govt. Field Notes - Boundary
 of Ra. Los Cerritos, see C.S. 9430

| Surveys Designated | By Whom Surveyed | Date of Contract | Amount of Surveys | When Surveyed | Mean Declaration |
|-------------------------------------------------------------------------------------------|------------------|------------------------------------|-------------------|----------------|----------------------|
| For Exhibit of Surveys previously made in this Township, See map approved August 26, 1880 | | | | | |
| Shoals offshore of the part of Smiths Island covered by Salt Marsh | John C. Forest | 19 th of March 19, 1890 | | April 25, 1890 | N ^o 15 E. |



Meanders of the shore of Dead Man's Island

| No. | Course | Distance | No. | Course | Distance |
|-----------------------------|-------------|----------|-----|-------------|----------|
| beginning of field | N 10 3/4° E | 1.00 | 5 | N 30 3/4° E | 1.00 |
| then according to the shore | N 18 1/4° E | 1.00 | 6 | N 18 1/4° E | 1.00 |
| Island of Dead Man's Island | N 50° E | 0.80 | 7 | N 50° E | 0.80 |
| 1 | S 37 1/2° W | 2.50 | 8 | N 58° W | 1.00 |
| 2 | S 2 1/2° W | 4.00 | 9 | North | 3.00 |
| 3 | S 38 1/2° E | 1.00 | 10 | N 75° W | 1.54 |
| 4 | N 62° E | 2.00 | 11 | S 49 1/2° W | 0.69 |
| | | 9.50 | | | 9.03 |
| | | | | | 9.50 |
| Aggregate - 18.53 ch. | | | | | |

Meanders of the shore of Smith's Island

| No. | Course | Distance | No. | Course | Distance |
|-----------------------------|-------------|----------|-----|-------------|----------|
| beginning of field | N 43 3/4° W | 3.50 | 5 | N 43 3/4° W | 3.50 |
| high water mark | S 4° 15' W | 2.25 | 6 | S 4° 15' W | 2.25 |
| then according to the shore | S 73° W | 4.00 | 7 | S 73° W | 4.00 |
| 1 | S 76 1/2° E | 7.6 | 8 | S 66° E | 5.00 |
| 2 | N 49° E | 7.00 | 9 | S 38 3/4° W | 13.50 |
| 3 | N 31 1/2° E | 7.50 | 10 | S 30 1/2° E | 1.58 |
| 4 | N 8 1/2° W | 5.00 | 11 | N 66° E | 3.20 |
| | | 16.26 | | | 33.03 |
| | | | | | 16.26 |
| Aggregate - 49.29 ch. | | | | | |

For Govt. Field Notes - Boundary of Ro. Los Cerritos, see C.S. 9430
 For Govt. Field Notes, Boundary Survey of Rancho Los Palos Verdes see CS 9427
 For Govt. Field Notes, Boundary Survey of Rancho San Pedro see CS 9428

W. bdy. of Township C.S. 9303

| Surveys Designated | By Whom Surveyed | Date of Contract | Amount of Survey |
|----------------------------------------|------------------|---------------------------------------------|------------------|
| North boundary of Township | Henry Hancock | January 31 st 1853 | |
| West | " | February 15 th 1855 | |
| Boundaries of Rancho San Pedro | " | Instructions December 11 th 1857 | |
| Los Palos Verdes | " | September 1858 | |
| Los Alamitos | " | September 1858 | |
| Los Cerritos | " | 1858 | |
| Lines shaded red | G. H. Thompson | 1868 | |
| Meanders of Shore of Dead Man's Island | " | " | |
| Meanders of Shore of Smith's Island | John Caldwell | August 15 th 1871 | |

TOWNSHIP 5 SOUTH, RANGES 13 AND 14 WEST, OF THE SAN BERNARDINO MERIDIAN, CALIFORNIA.

DEPENDENT RESURVEY AND METES-AND-BOUNDS SURVEY

A history of surveys is contained in the field notes.

This plat represents the dependent resurvey of the north, west, and south boundaries of the original military reservation (the 500 Varas Government Reserve), designed to restore the corners in their true original locations according to the best available evidence, and the metes-and-bounds survey of the east boundary of the Fort MacArthur Military Reservation Tract (Fort MacArthur Tract), a portion of the center line of Pacific Avenue, and the easterly line of Pacific Avenue forming the west boundary of the Fort MacArthur Military Reservation Tract (Fort MacArthur Tract), within the City of Los Angeles and the Community of San Pedro, Los Angeles County, California, Township 5 South, Ranges 13 and 14 West, San Bernardino Meridian, California.

Survey was executed by Gregory J. Aten, Cadastral Surveyor, beginning August 21, 2012, and completed November 16, 2012, pursuant to Special Instructions dated November 16, 2012, for Group No. 1654, California.

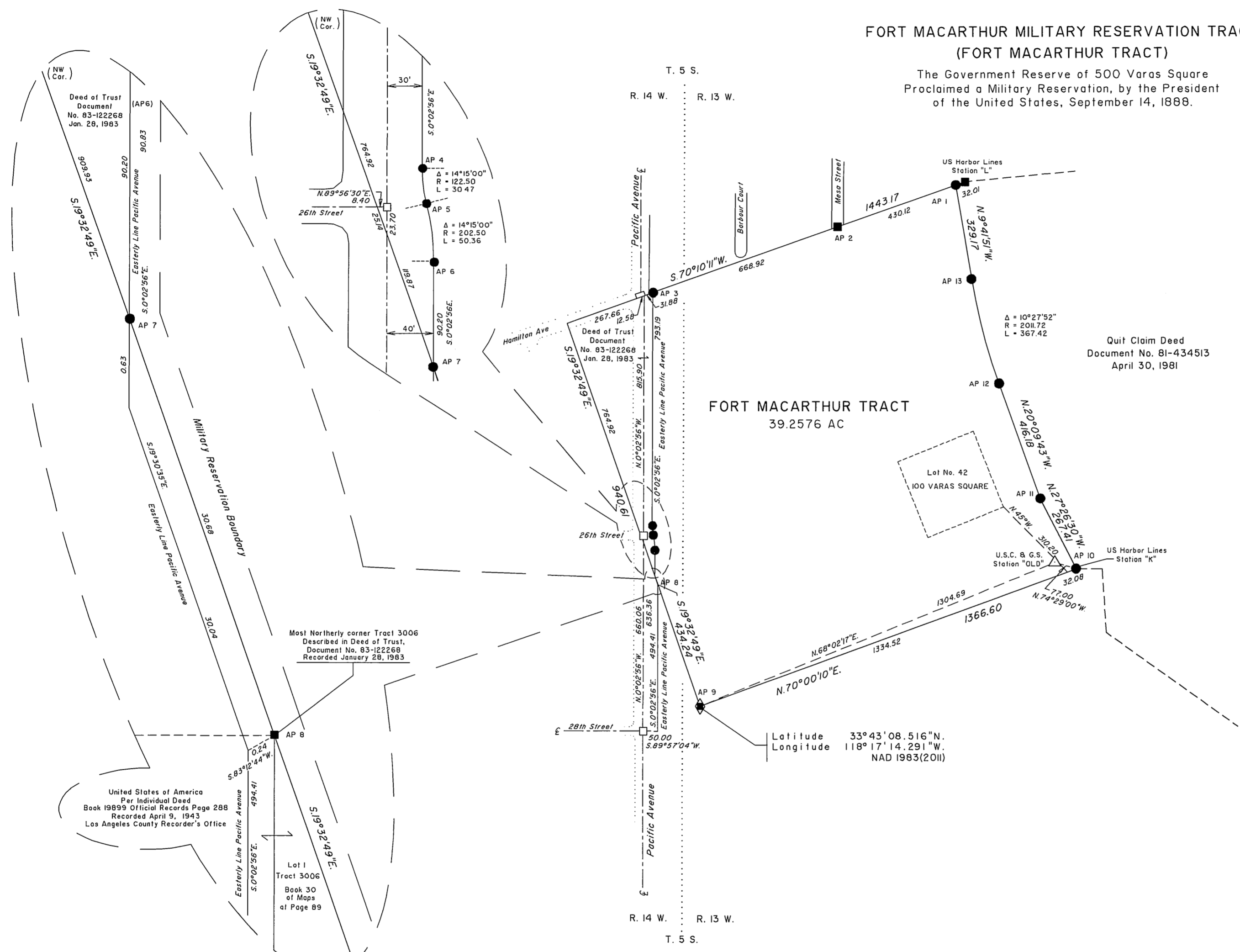
FORT MACARTHUR MILITARY RESERVATION TRACT (FORT MACARTHUR TRACT)

The Government Reserve of 500 Varas Square
Proclaimed a Military Reservation, by the President
of the United States, September 14, 1888.

FORT MACARTHUR TRACT
39.2576 AC

Quit Claim Deed
Document No. 81-434513
April 30, 1981

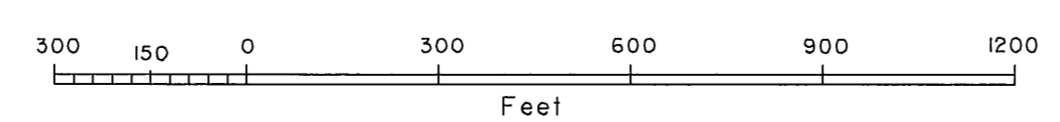
Latitude 33°43'08.516"N.
Longitude 118°17'14.291"W.
NAD 1983(2011)



LEGEND

- ◆ Original Position Perpetuated by Testimonial or Literal Evidence: Remonumented
- Local Evidence Recovered: Not Remonumented
- Local Evidence Recovered: Remonumented
- Position Determined and Monumented
- △ Control Station

Partial symbols represent corners for that side of line



UNITED STATES DEPARTMENT OF THE INTERIOR
BUREAU OF LAND MANAGEMENT
Sacramento, California

This plat, having been correctly prepared in accordance with the requirements of law and this Bureau, is hereby accepted.

For the Director

Gregory J. Aten February 14, 2014
Chief Cadastral Surveyor-California