

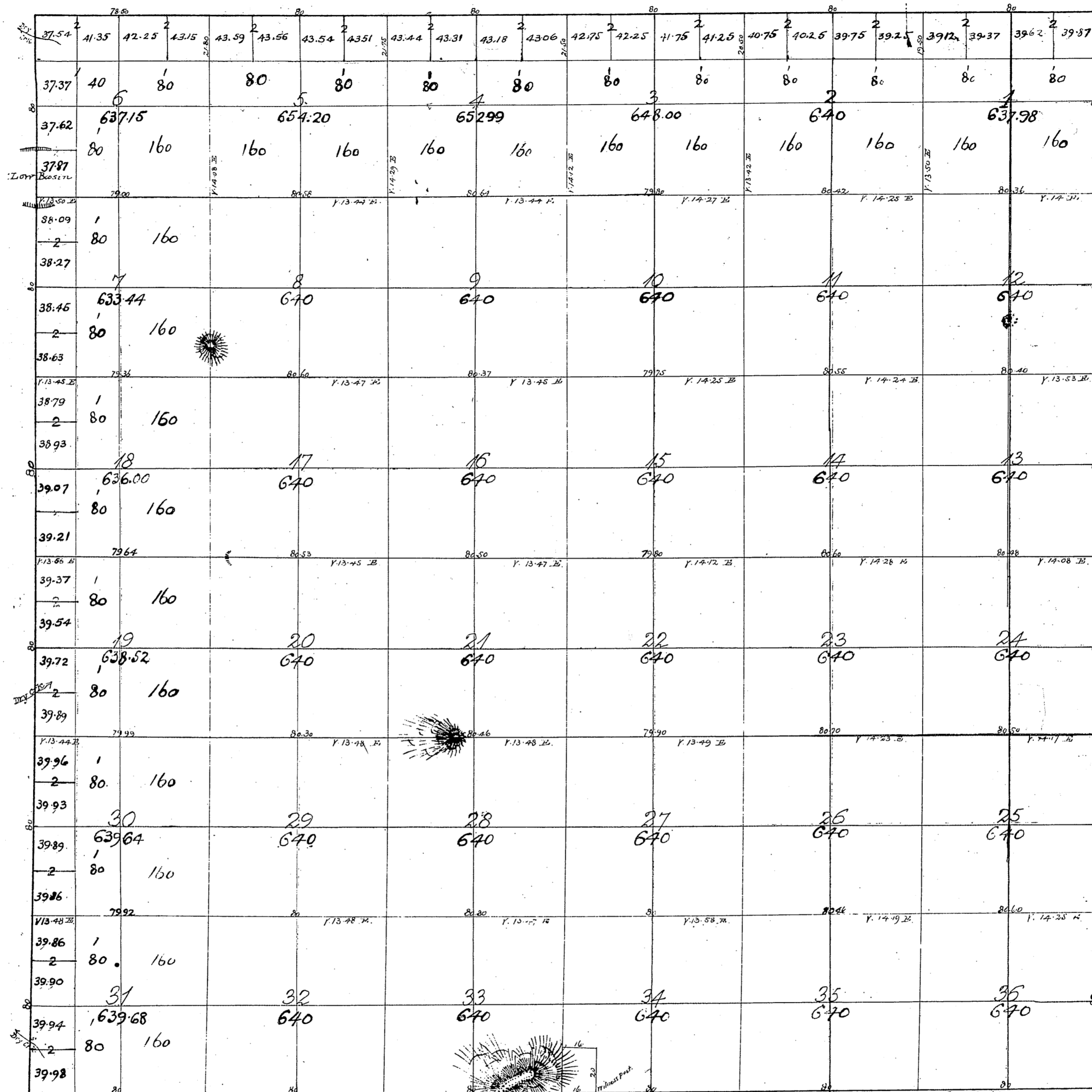
Township N° VI North

Range N° VIII West

San Bernardino Meridian.

T 6 N  
R 8 W  
①

~~T 6 N~~  
~~R 8 W~~  
①



Govt Field Notes  
 C.S. 9083, S. Bdys. Secs. 20, 28, 29, 30, 31, 32, 33, 34  
 W. Bdys. Secs. 28, 29, 32, 33, 30, 34  
 Exterior and subdivision lines - C.S. 9134  
 South boundary Sec. 31. C.S. 9145

Aggregate Area of Public Lands 23,057.60 acres  
 meridians not otherwise noted, read as Var. of 14° 08' 10" E.

Surveys Designated	By Whom Surveyed	Date of Contract	Amount of Surveys Acres Chg. Hrs.	When Surveyed
South boundary of Township	Ralph W. Norris	October 12 <sup>th</sup> 1853	6 60 00	1853
Rest of Township Towns	"	December 23 <sup>rd</sup> 1854	17 78 50	1855
Sections	"	October 19 <sup>th</sup> 1855	60 11 56	1856

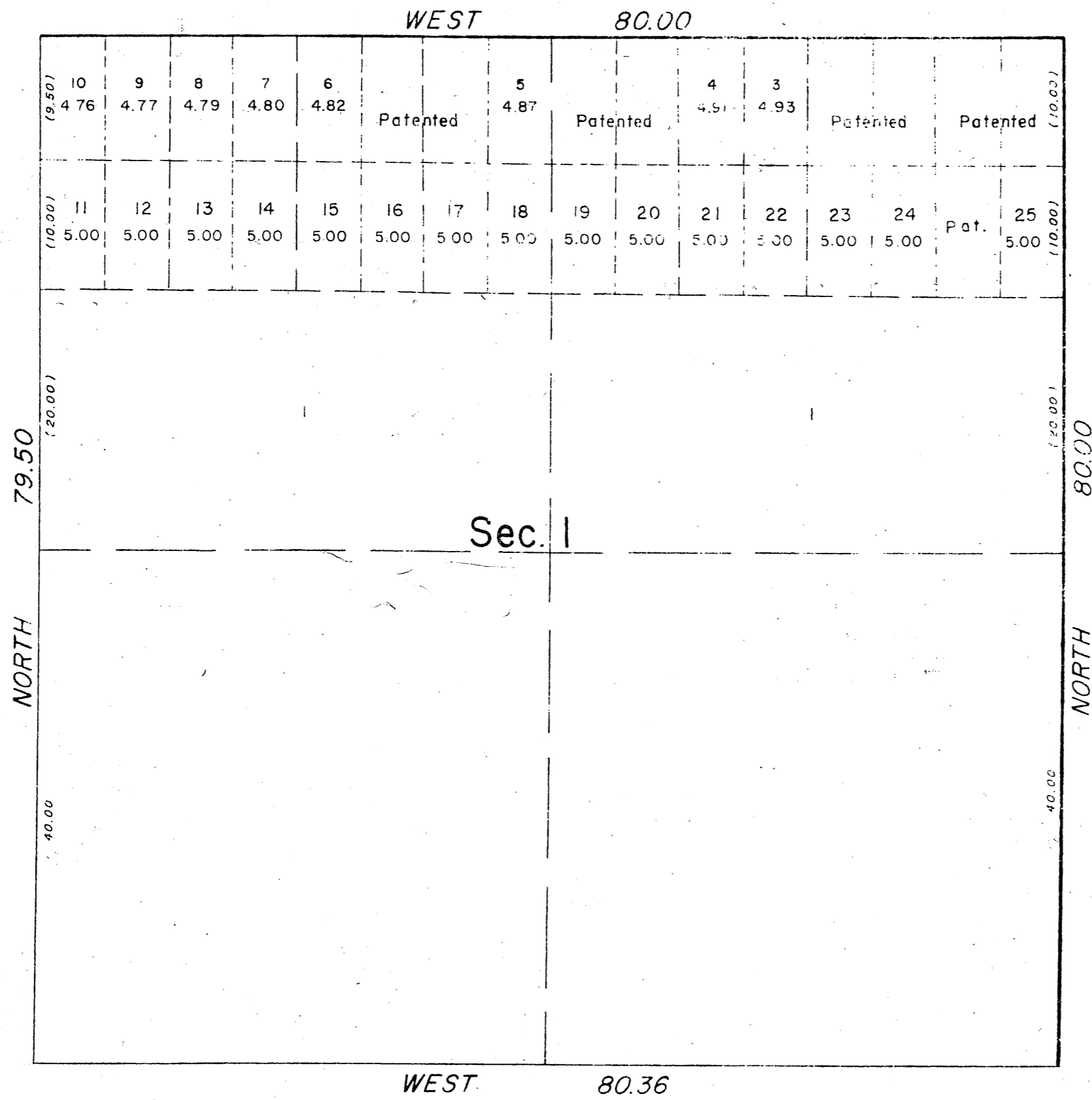
Signed:-  
 John C. Hays,  
 Surv. Gen'l. Cal.

T 6 N  
R 8 W

TOWNSHIP 6 NORTH, RANGE 8 WEST, OF THE SAN BERNARDINO MERIDIAN, CALIFORNIA.  
 SUPPLEMENTAL PLAT

T. 6 N.  
 R. 8 W.

②

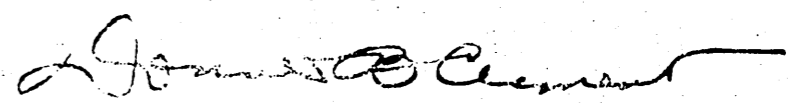


This plat represents a subdivision of lots 2, comprising the  $\frac{1}{4}$ NE $\frac{1}{4}$  and  $\frac{1}{4}$ NW $\frac{1}{4}$  of Section 1, T. 6 N., R. 8 W., S. B. M., California, based upon the plat approved June 19, 1866.

The lands designated "Patented" are embraced in applications which were patented as aliquot parts of the section.

UNITED STATES DEPARTMENT OF THE INTERIOR  
 BUREAU OF LAND MANAGEMENT  
 Washington, D.C. September 16, 1957

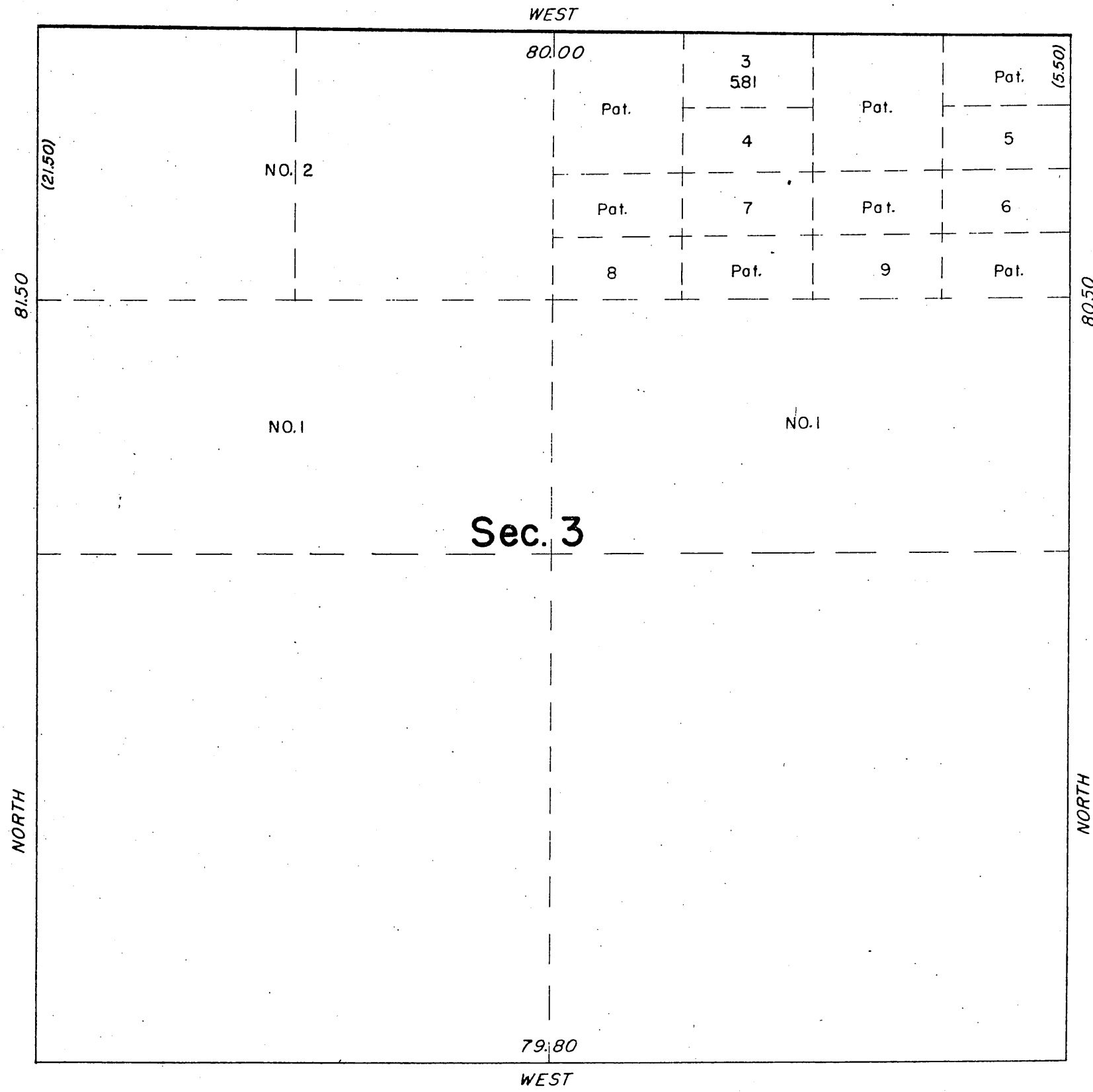
This plat, showing amended lottings, is based upon the official records, and having been correctly prepared in accordance with the regulations, is hereby accepted.

For the Director  
  
 Acting Cadastral Engineering Staff Officer

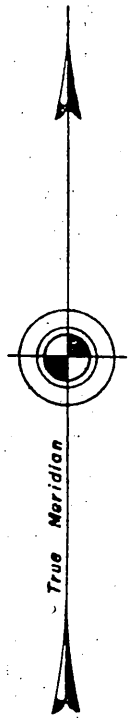
TOWNSHIP 6 NORTH, RANGE 8 WEST, OF THE SAN BERNARDINO MERIDIAN, CALIFORNIA.  
 SUPPLEMENTAL PLAT

T. 6.N.  
 R. 8 W.

③



This plat, showing amended lottings in Section 3, Township 6 North, Range 8 West, San Bernardino Meridian, California, is based upon the plat approved June 19, 1856.



Lots 4 to 9, inclusive, contain 5.00 acres each.

UNITED STATES DEPARTMENT OF THE INTERIOR  
 BUREAU OF LAND MANAGEMENT  
 Washington, D.C. January 25, 1960

This plat, showing amended lottings, is based upon the official records, and having been correctly prepared in accordance with the regulations, is hereby accepted.

For the Director

Cadastral Engineering Staff Officer

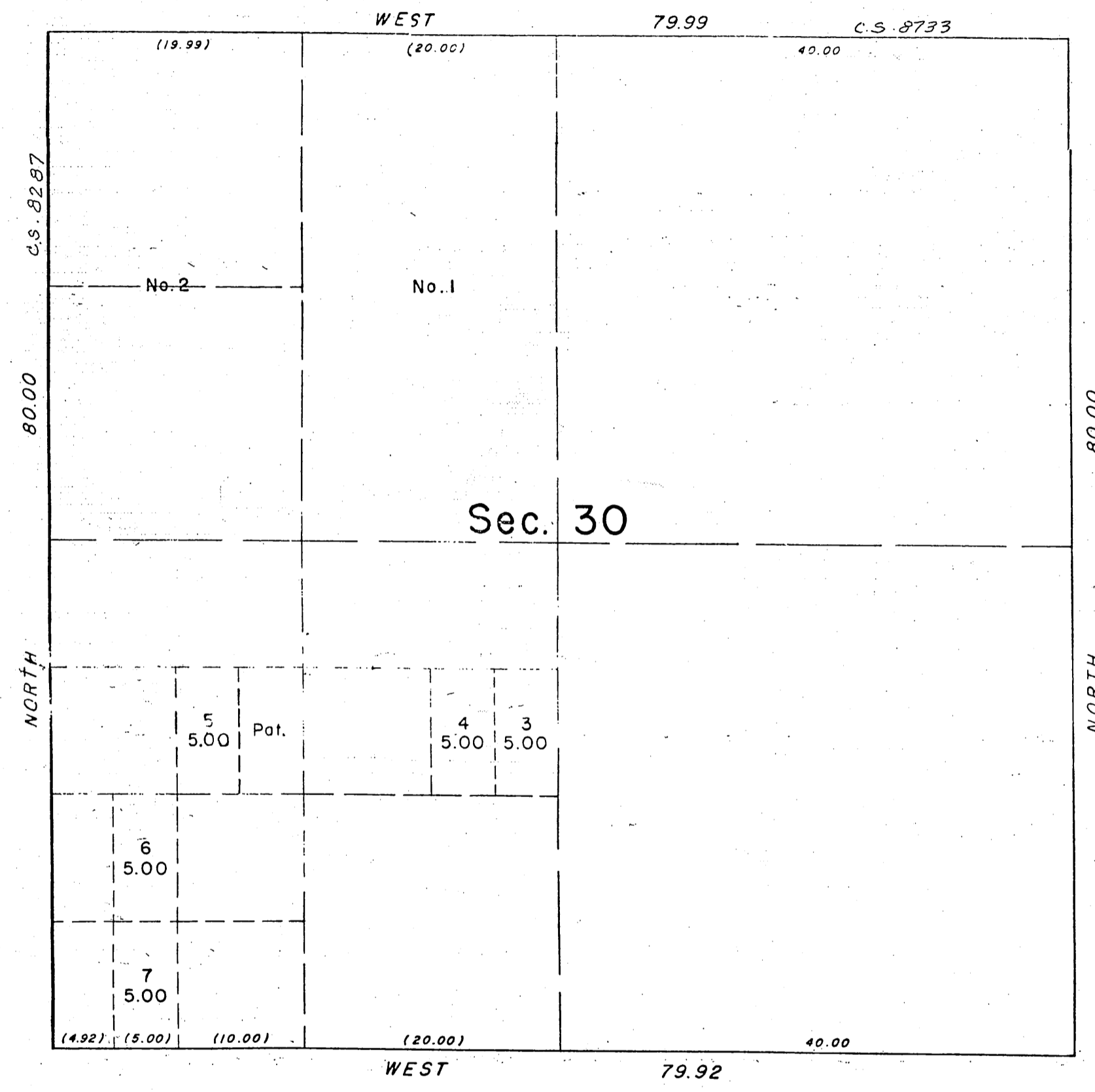
TOWNSHIP 6 NORTH, RANGE 8 WEST, OF THE SAN BERNARDINO MERIDIAN, CALIFORNIA.

T. 6 N.  
R. 8 W.

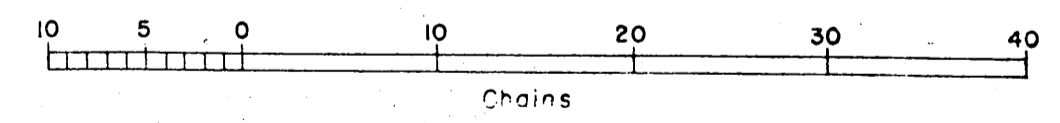
SUPPLEMENTAL PLAT

FILED IN U.S. LAND  
LOS ANGELES, CALIF. (4)

W.M. July 21, 1961  
*Rolla E. Chandler*  
Manager



This plat, showing amended lottings in Section 30, Township 6 North, Range 8 West, San Bernardino Meridian, California, is based upon the plat approved June 19, 1856.



INDEX 67

UNITED STATES DEPARTMENT OF THE INTERIOR  
BUREAU OF LAND MANAGEMENT  
Washington, D.C. June 21, 1961

This plat, showing amended lottings, is based upon the official records, and having been correctly prepared in accordance with the regulations, is hereby accepted.

For the Director

*Arnold Clement*

Cadastral Engineering Staff Officer