

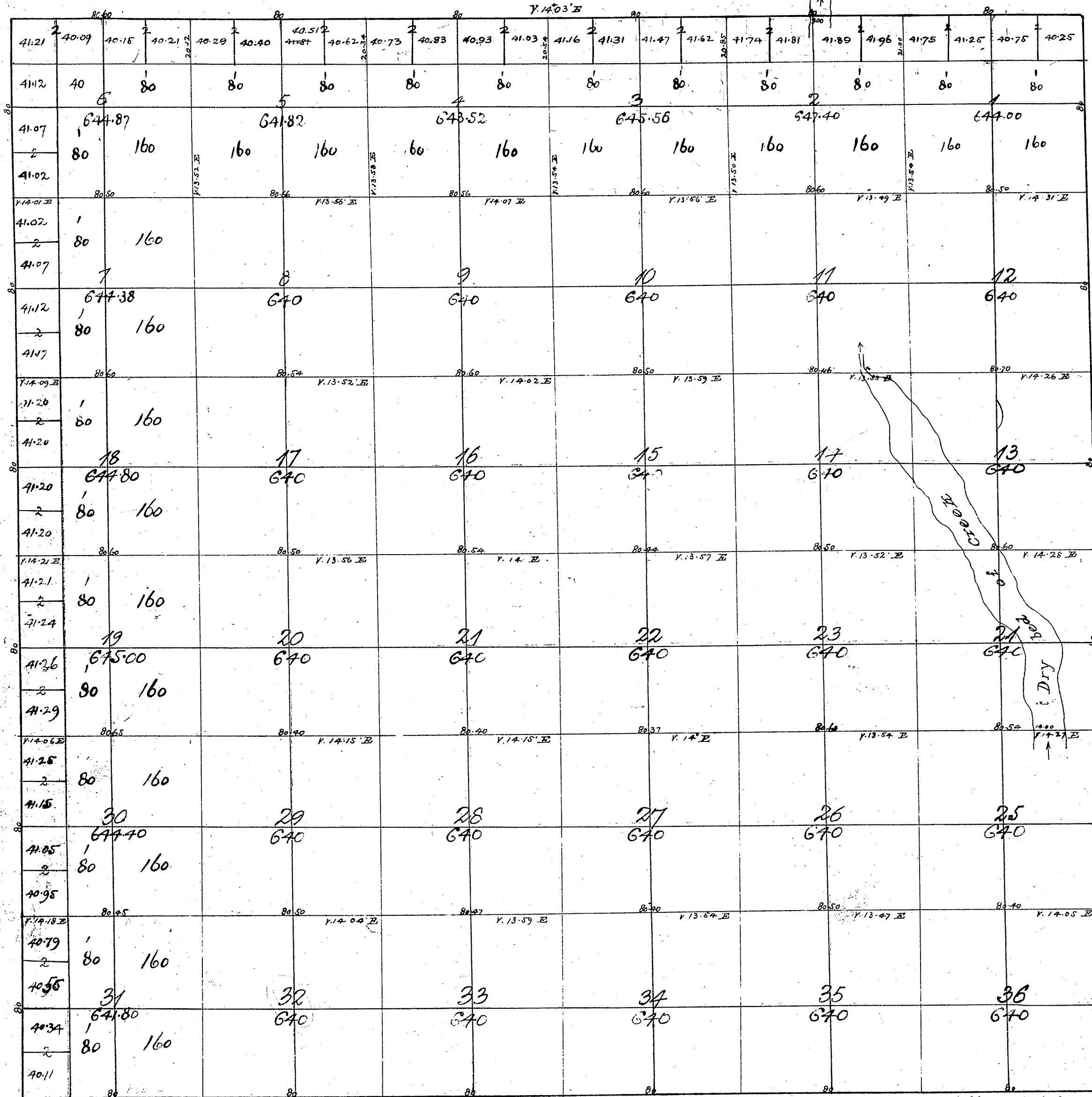
Township N° VI North

Range N° XI West

San Bernardino Meridian.

T6N
R11W

1



| Surveys Designated | By Whom Surveyed | Date of Contract | Amount of Surveys M ² C ² W ² | When Surveyed |
|---------------------------------|------------------|--------------------------------|---|---------------|
| South West boundary of Township | Ralph W. Norris | October 12 th 1853 | 12 00 00 | 1853 |
| East | " | December 23 rd 1854 | 6 00 00 | 1855 |
| North | " | October 19 th 1855 | 6 00 60 | 1856 |
| Section | Iones | " | 60 18 53 | " |

Signed:-

John C. Hays

Surr. Genl. Cal.

Gov Field notes Sec 31, 32, 33
 See C.S. No 9032.
 " " " N. Dry Tr. P. see C.S. 9116
 " " " S. " " " C.S. 9145
 C.S. 9214 - East Bdy of Typ.
 C.S. 9215 - Interior Sec. lines.