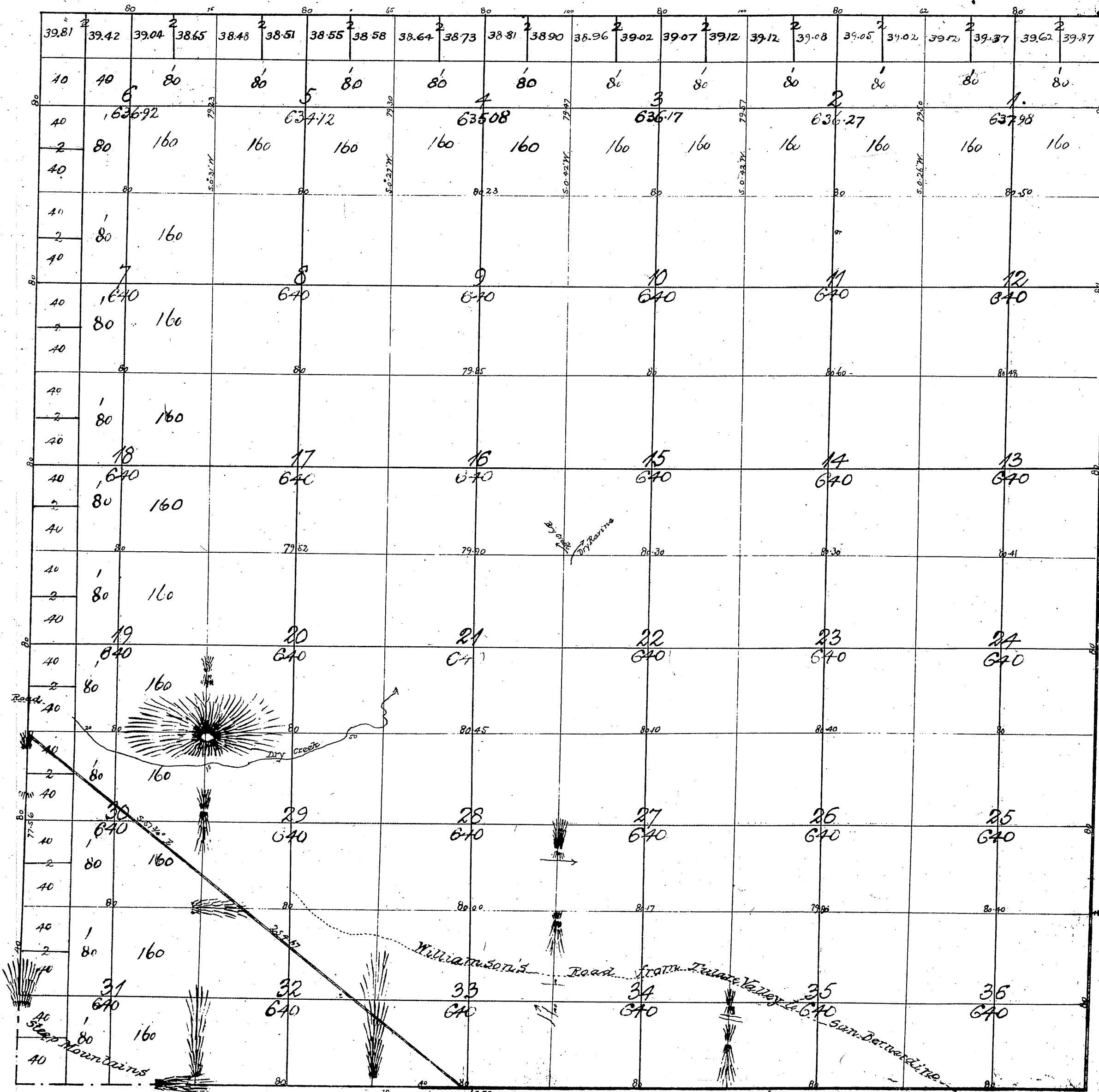


Township N^o VII North

Range N^o XII West

San Bernardino Meridian.

T6N
R12W
①



aggregate area of Public Lands 23,016.54 acres

(Bivelines run and paid for before under former contract)

Surveys Designated	By Whom Surveyed	Date of Contract	Amount of Surveys Mile Sq. Acs.	When Surveyed
East part of South boundary of Township Traverse	Reazie W. Norris	October 12 th 1853	9 60 00	1853
Rest of Township Lines	" "	December 23 rd 1854	12 60 00	1855
Sections Lines	" "	" "	60 00 48	"

Signed:-
John C. Hays
Surv. Gen'l. Cal.

Gov Field notes Sec 35 & 36 See C.S. No 9035
For S. & W. Boundaries and
Subdivisions Lines of T. 6 N.
see C. S. 9170.
C.S. 9214 North part of West Bay of Twp.
Sec 18, 19, 30 & 31 - C.S. 9206.
Boundary line of the San Gabriel National Forest C.S. 9389