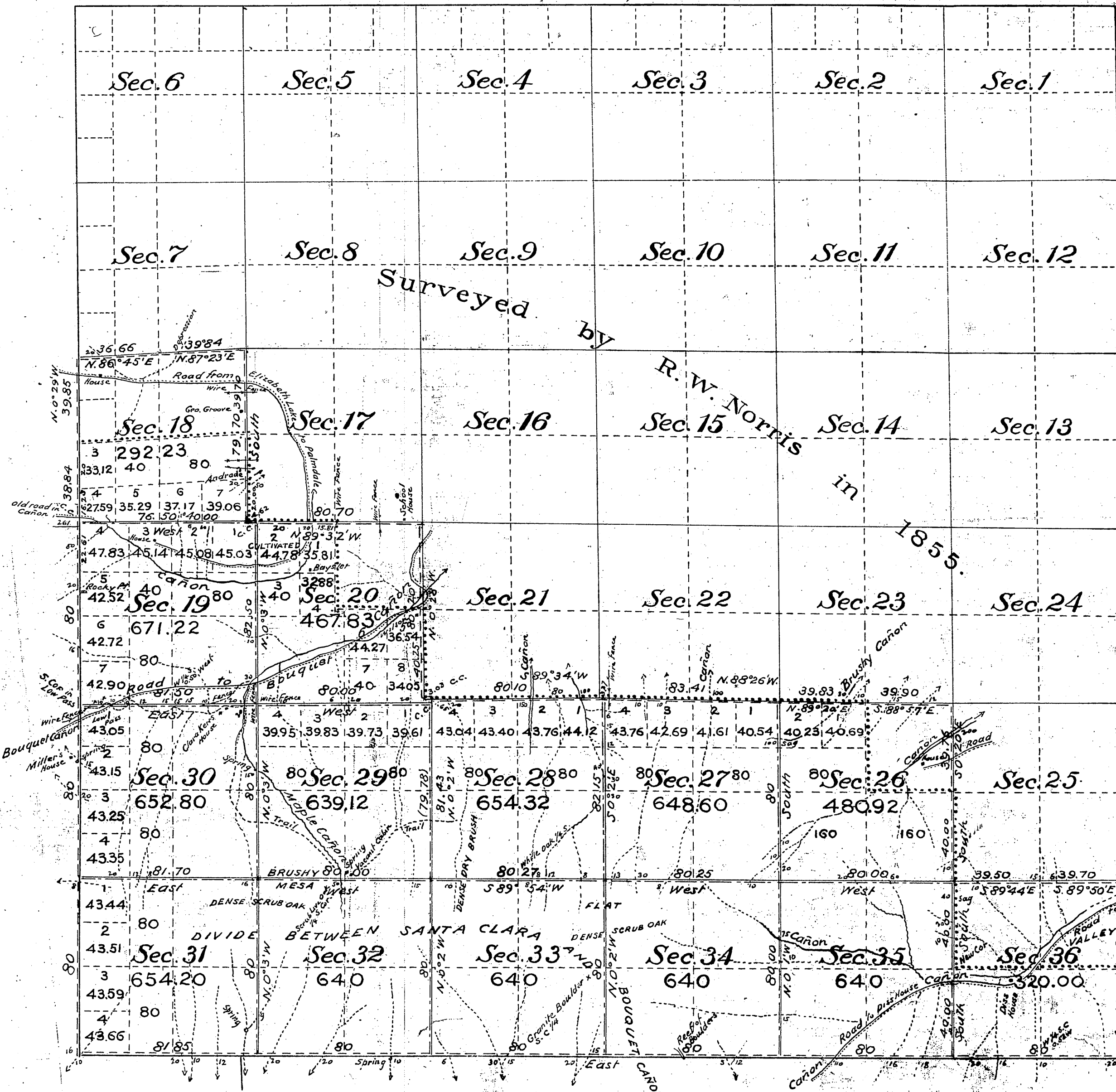


Township N^o 6 North, Range N^o 13 West, San Bernardino Meridian, California.



notes
For field on line bet Secs. 12 & 14 & 12 & 15 former bdy. Santa Barbara Natl. Forest
see C.S. 9156

July 25, 03
To be filed Aug. 25, 03.

Public Land previously surveyed
surveyed by Geo. W. Pearson
Aggregate 23,082.84

all sees south of this line, within Pine Mountain and
Yaca Lake Forest Reserve Proclamation of President
June 29, 1898

The line of demarcation between the areas previously counted
total acreage surveyed and the New Surveys, is indicated thus.

Filed in U. S. Land Office
Los Angeles, Cal. Aug. 25, 1903
W. L. Graham
Register

TWP.
For N. & W. Bdy. see C.S. 9120
For S. Bdy. and Sub. Lines of TWP. See C.S. 9173

Surveys Designated	By whom Surveyed	Contract		Amount of Surveys			When Surveyed
		No.	Date	Mis.	Chs.	Lks.	
Lines previously surveyed, exhibited on Map approved February 19 th 1856.							
East Boundary of Sec's 25 & 36	W. H. Norway		Aug. 25, 1884				1884
Part of West Bdy. of Township	"		"				"
Part of West Bdy. of Tp. Re-surveyed	Geo. W. Pearson	173	April 8, 1901	3	78	69	1901
East Bdy. of Sec. 36	"	"	"		79	84	"
South Bdy. of Tp. Stand. Line	"	"	"	6	01	85	"
Section Lines Re-surveyed	"	"	"	9	39	30	"
Section Lines New	"	"	"	17	46	30	June 27 th 1901
Connecting Lines	"	"	"		15	28	"

The above Map of Township N^o 6 North, Range N^o 13 West, San Bernardino Meridian, California, is strictly conformable to the field notes of the Surveys thereof, on file in this Office which have been examined and approved.
U. S. Surveyor-General's Office,
San Francisco, California
August 29th 1902.

W. L. Graham
U. S. Surveyor-General for California.

T6N
R13W
②

(A-675a)

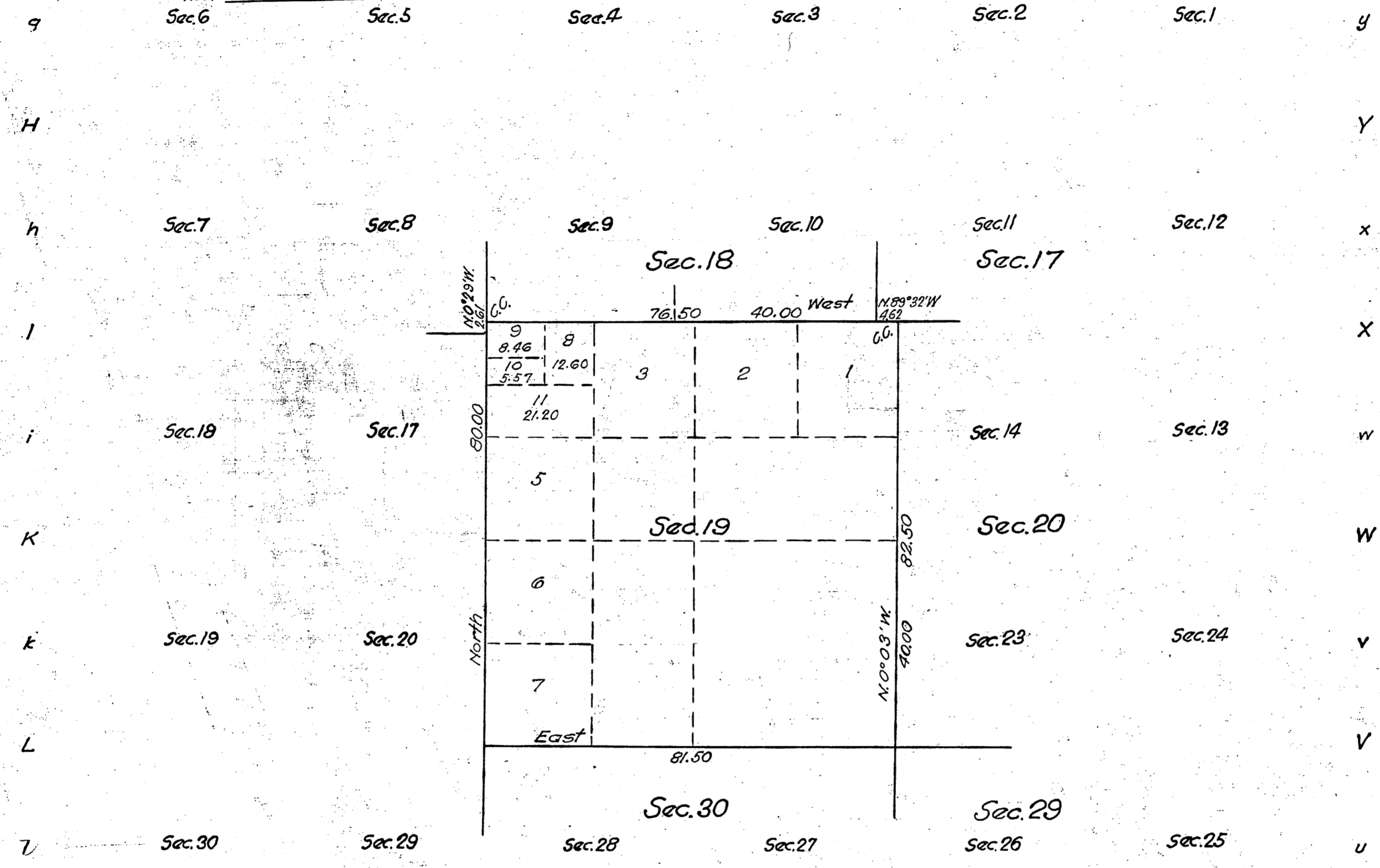
Supplemental Plat of Section 19,
Township No 6 North, Range No 13 West, San Bernardino Meridian, California.

G F F e E d D c c b B a A

Scale: 20 chains = 1 inch.

Received
U.S. Land Office
Los Angeles, Cal.
Date Jun 10 1918

Hour _____
Sec. 6 _____ Sec. 5 _____



47.8306
y
Y
x
X
w
W
v
V
u
U
v
u
U

Filed in U.S. Land Office,
Los Angeles, Cal.
June 13 1918
B. P. Grows
Register.

Los Angeles 017610-027636, E. April 15, 1918.

This supplemental plat showing the subdivision of Lot 4, Section 19, T.6N, R.13W, San Bernardino Meridian, California, plat approved August 29, 1902, is made for the purpose of obtaining the area and legal description of the subdivisions thereof, to accommodate Homestead Entry Los Angeles 017610-027636, part of which embraces portions of the above Lot of said Section, and is hereby approved U.S. Surveyor-General's Office, San Francisco, California, April 29, 1918.

Louis H. Moore
U.S. Surveyor-General
for California.

Areas in Acres	
Public Land	
Indian Reservation	
Indian Allotments	
Mineral Claims	
Water Surface	
Total Area	

Scale 40 Chains to an Inch
Mean Magnetic Declination

Surveys Designated	By Whom Surveyed	Contract		Amount of Surveys		When Surveyed		
		No.	Date	Mis.	chs.	fts.	Began	Completed

The above map of Township No. _____ Range No. _____ of the _____ Meridian is strictly conformable to the field notes of the survey thereof on file in this office, which have been examined and approved.
U.S. Surveyor-General's Office
Surveyor General

