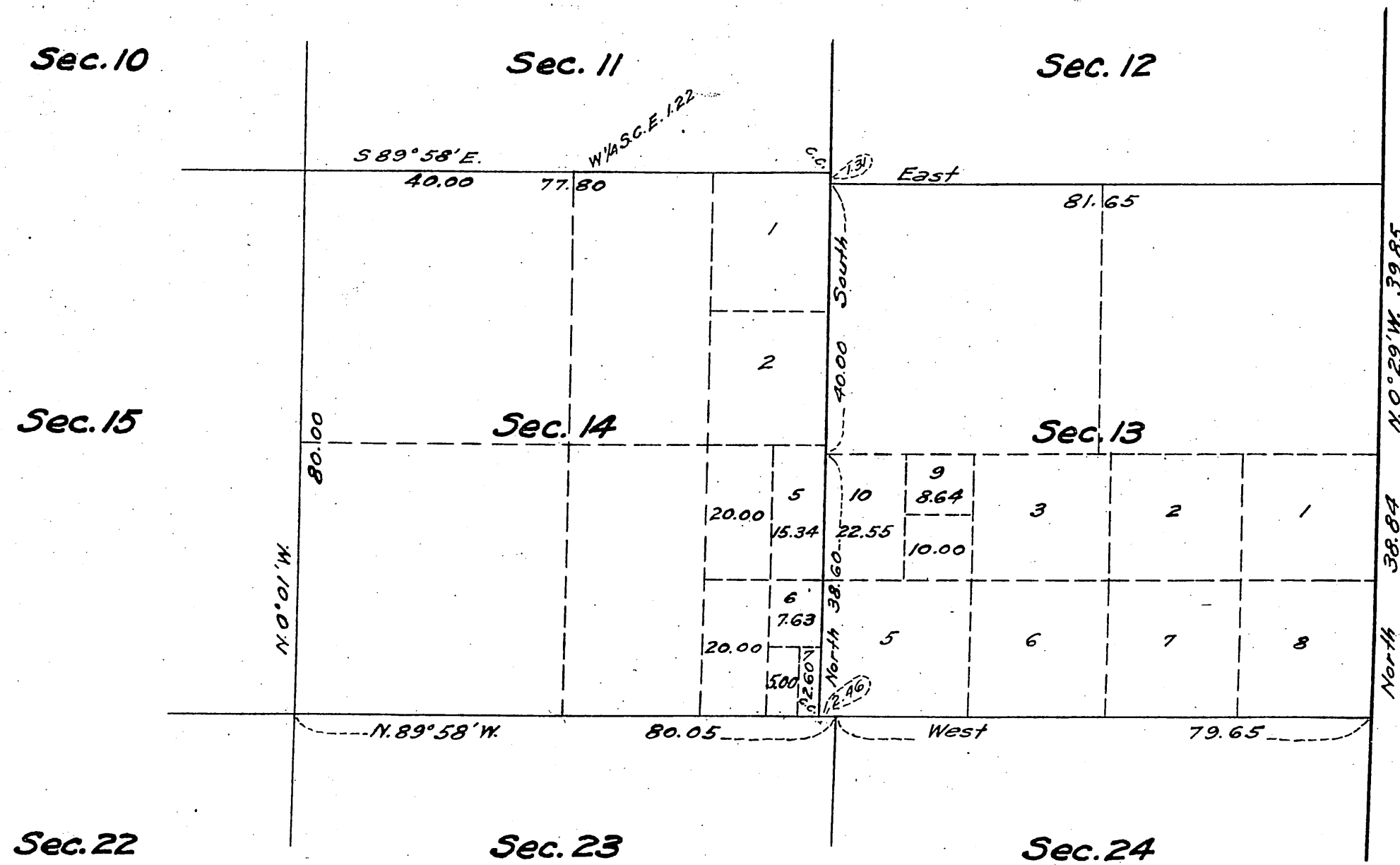


Supplemental Plat of Sections 13 and 14,  
Township N<sup>o</sup> 6 North, Range N<sup>o</sup> 14 West,  
San Bernardino Meridian,  
California.

Scale: 20 chains = 1 inch.



Los Angeles 016949, "E" C.G.T., December 28, 1916.

Filed in U. S. Land Office,  
Los Angeles, Cal.  
JAN. 29, 1917.

John D. Roche  
Register.

This supplemental plat showing the subdivision of Lot 4, Section 13, and Lots 3 and 4, of Section 14, T. 6 N., R. 14 W., San Bernardino Meridian, California, plat approved August 29, 1902, is made for the purpose of obtaining the area and legal description of the subdivisions thereof, to accommodate Homestead Entry, Los Angeles 016949 part of which embraces portions of the above Lots of said Sections, and is hereby approved.

U. S. Surveyor-General's Office,  
San Francisco, California,  
January 6, 1917.

Frederic W. Gould  
U. S. Surveyor-General  
for California.

Township N<sup>o</sup> VI North

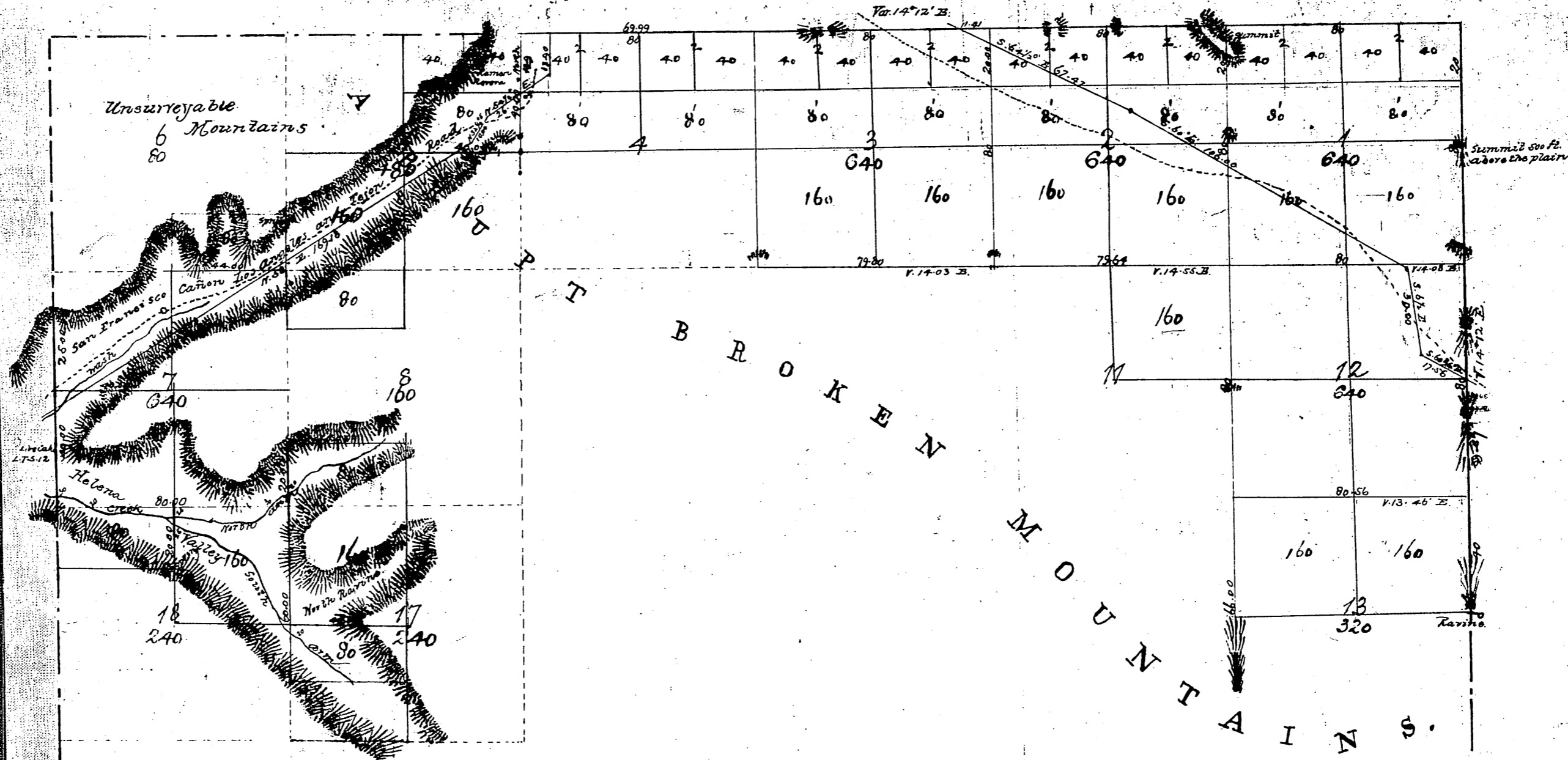
Range N<sup>o</sup> XIV West

of the

San Bernardino Meridian.

T6N  
R14W

(2)



Aggregate Area of Public Lands Surveyed 3280.00 Acres  
 Estimated " " Mountains " Un-Surveyed 19760.00 "  
 Aggregate 23,040.00 "

Meridian Surveyed for of 1872 B.

Note: Sections 5, 6, 7, 8, 17, 18, surveyed subsequently, and is attached to original map as an amendment.

The area of said sections is not included in Estimate given below.

For N. & E. Bdv of T6N, see C.S. 9170  
 For notes on Secs. 2, 11, 12, 13, 14, 15, 16, 17, 18 see C.S. 9162

Surveys Designated	By Whom Surveyed	Date of Contract	Amount of Surveys			When Surveyed
			Acres	Cts	Ms	
Traverse Lines	Ralph W. Norris	October 12 <sup>th</sup> 1853	5	40	11	1853
Township	"	December 23 <sup>rd</sup> 1854	5	47	00	1855
Section	"	"	9	20	00	"

Lines colored blue run and paid for under former contract.

For subdivision lines of N. 1/2 of T6N, see C.S. 9171.

Signed:-

John C. Hays  
 Surv. Gen'l. Cal.

C.S. 9206 South line of Sec. 12 West 1/2 line of Sec. 1 & 2  
 also North line of Sec. 2, 3, 4, 5, 6, 7, 8, 9, 10, 11, 12, 13, 14, 15, 16, 17, 18

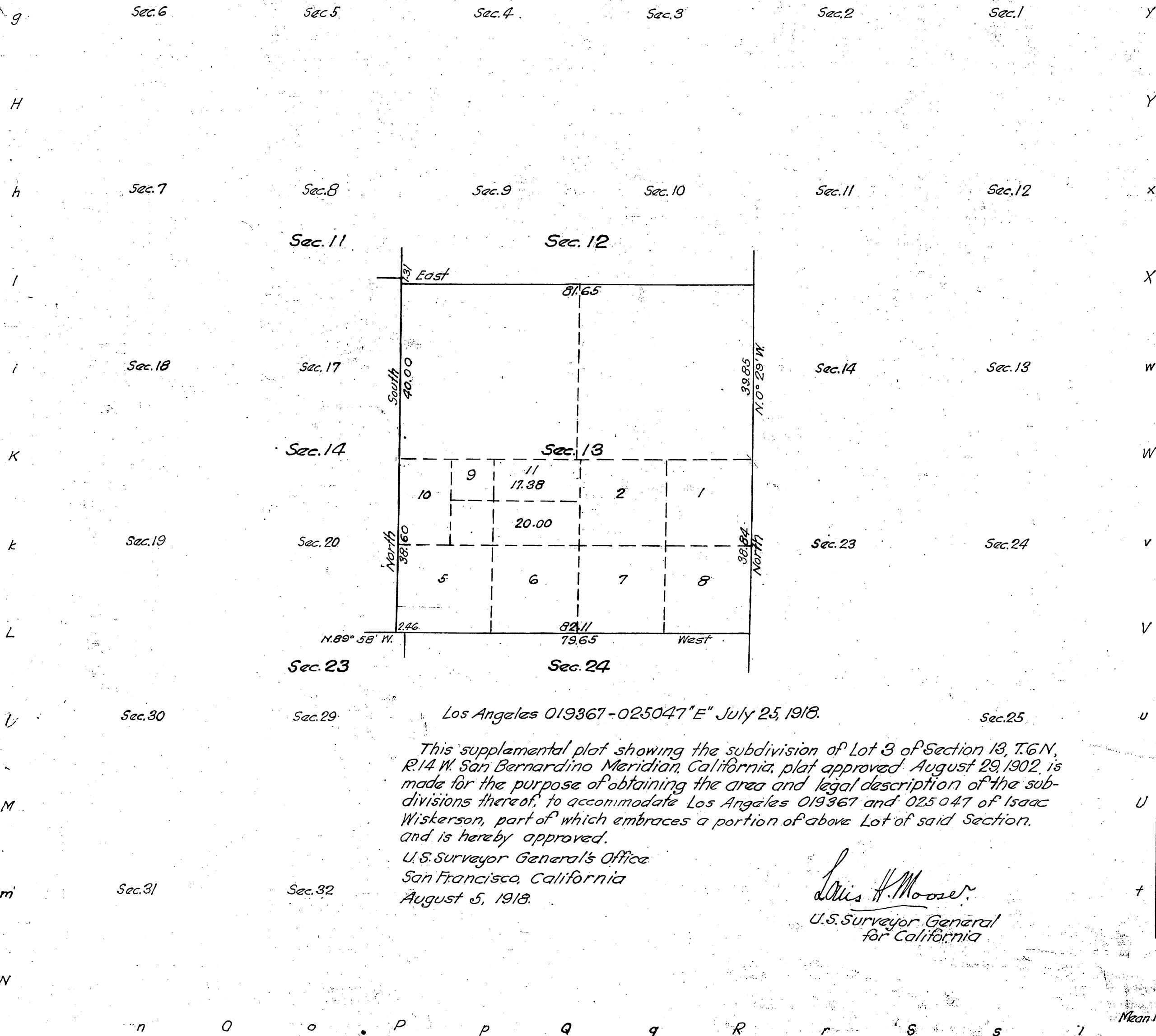
T6N  
R14W  
③

(4-6759)

Supplemental Plat of Section 13  
Township No 6 North Range No 14 West, San Bernardino Meridian, California

G F F e E d D c C b B a A

Scale, 20 chs = 1 inch



Los Angeles 019367-025047 "E" July 25, 1918.

This supplemental plat showing the subdivision of Lot 3 of Section 13, T.6N, R.14 W. San Bernardino Meridian, California, plat approved August 29, 1902, is made for the purpose of obtaining the area and legal description of the subdivisions thereof, to accommodate Los Angeles 019367 and 025047 of Isaac Wiskerson, part of which embraces a portion of above Lot of said Section, and is hereby approved.

U.S. Surveyor General's Office  
San Francisco, California  
August 5, 1918.

*Louis H. Moore*  
U.S. Surveyor General  
for California

Areas in Acres	
Public Land	
Indian Reservation	
Indian Allotments	
Mineral Claims	
Water Surface	
Total Area	

Received  
U.S. Land Office  
Los Angeles, Cal.  
Date Sept 6/18  
Hour 9 Am  
*B. J. Grover*  
Register

Scale in Chains to an inch  
Mean Magnetic Declination

Surveys Designated	By Whom Surveyed	Contract		Amount of Surveys			When Surveyed	
		No.	Date	Mls.	chs.	fts.	Begun	Completed

The above map of Township No. \_\_\_\_\_ Range No. \_\_\_\_\_ of the \_\_\_\_\_ Meridian \_\_\_\_\_ is strictly conformable to the field notes of the survey thereof on file in this office, which have been examined and approved.  
U.S. Surveyor General's Office

