

T. 6 N.  
R. 15 W.

PLAT OF  
**HOMESTEAD ENTRY SURVEY No. 83**  
in the  
**SANTA BARBARA NATIONAL FOREST**  
in

Section 32 unsurveyed, T. 6 N., R. 15 W.,  
Section 33 unsurveyed, T. 6 N., R. 15 W.

of the  
*San Bernardino Meridian*  
California.

This plat of Homestead Entry Survey No. 83 situated in Section 32 unsurveyed in Township 6 North of Range 15 West and in Section 33 unsurveyed, in Township 6 North of Range 15 West and in Section surveyed, in Township of Range and in Section surveyed, in Township of Range of the San Bernardino Meridian is strictly conformable to the field notes of the Survey thereof, on file in this office, which have been examined and approved.

Office of U.S. Surveyor General,  
San Francisco, California.  
July 7, 1914

*Frank M. Gould*  
U.S. Surveyor General  
for California.

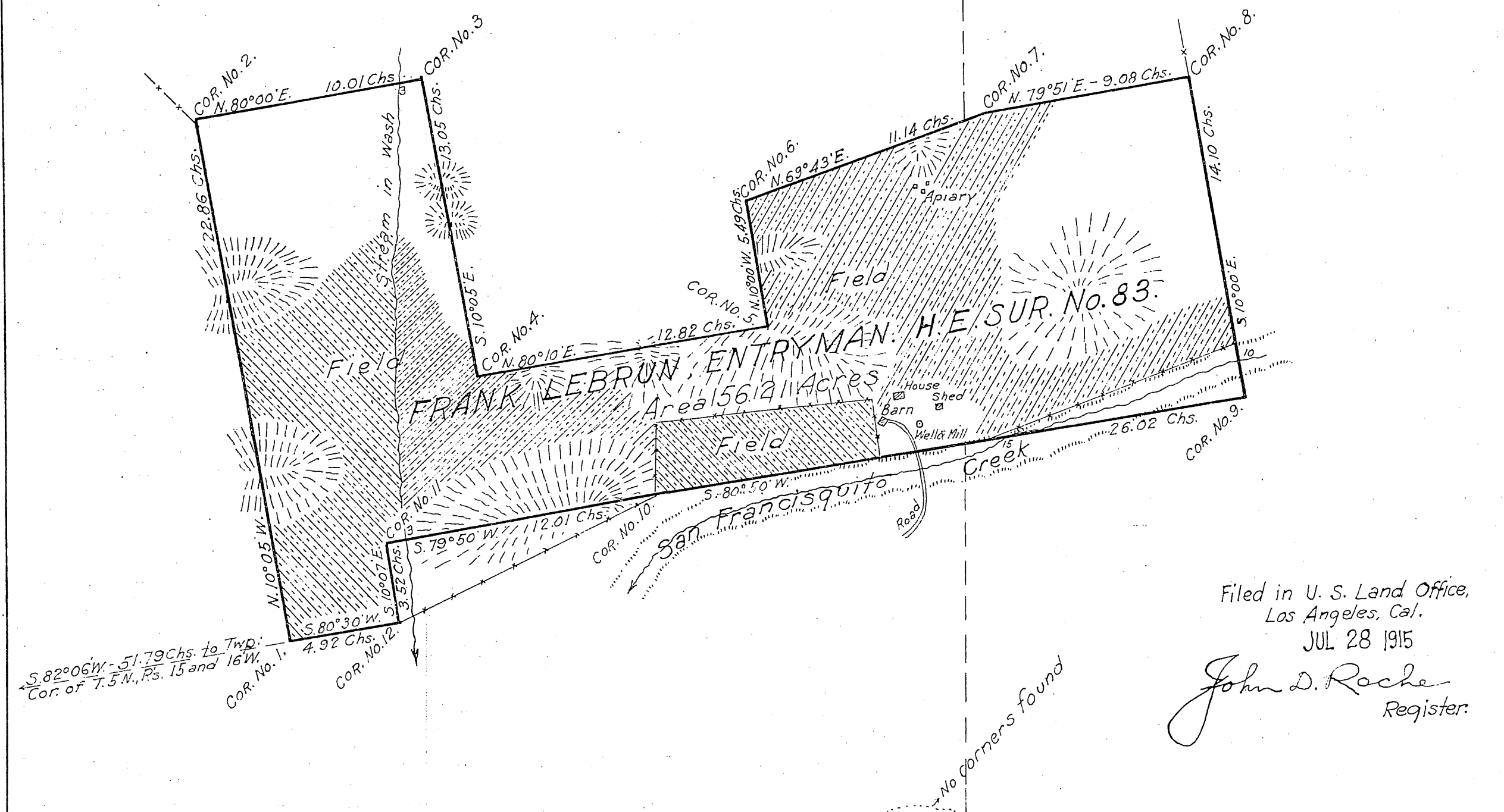
For Field Notes on this Homestead Entry see C.S. 9375

List No. 5-577 Date, Oct. 18, 1910.  
Act of June 11, 1906; Act of Mar. 4, 1913.  
Latitude 34°33' N. } At Cor. No. 1.  
Longitude 118°30' W. }  
Mean Mag. Decl. 15°45' E. }

T. 6 N., R. 15 W., S. B. M.

Sec. 32.  
Unsurveyed

Sec. 33  
Unsurveyed



Filed in U. S. Land Office,  
Los Angeles, Cal.  
JUL 28 1915

*John D. Roche*  
Register.

Sec. 6.

Sec. 5.

T. 5 N., R. 15 W., S. B. M.

Scale  
5 Chains equal 1 inch

Surveys Designated	By Whom Surveyed	Instructions or Contract		When Surveyed		Date of Approval
		No.	Date	Begun	Completed	
H.E. Survey No. 83	Percy L. Day		Nov. 1, 1913.	Mar. 25, 1914	Mar. 27, 1914.	July 7, 1914
1st. Stand. Par. N.	W. H. Norway		Oct. 10, 1879.	1879		Mar. 19, 1880.

Areas	
H.E. Survey No. 83	Conflicts
In Section	
In Section	
In Section	
In Section	
Total	56.21

Initials  
J.G.S.  
Exam. by J.M.W.  
FORM 85-A

Traced by E.G.P. May 3, 22  
Checked by H.L. May 4, 22

T.6N.  
R.15W.

PLAT OF  
HOMESTEAD ENTRY SURVEY No. 190  
in the  
SANTA BARBARA NATIONAL FOREST  
in

Section 32 unsurveyed, T.6 N., R.15W.  
Section 33 unsurveyed, T.6 N., R.15W.

of the  
San Bernardino Meridian  
California

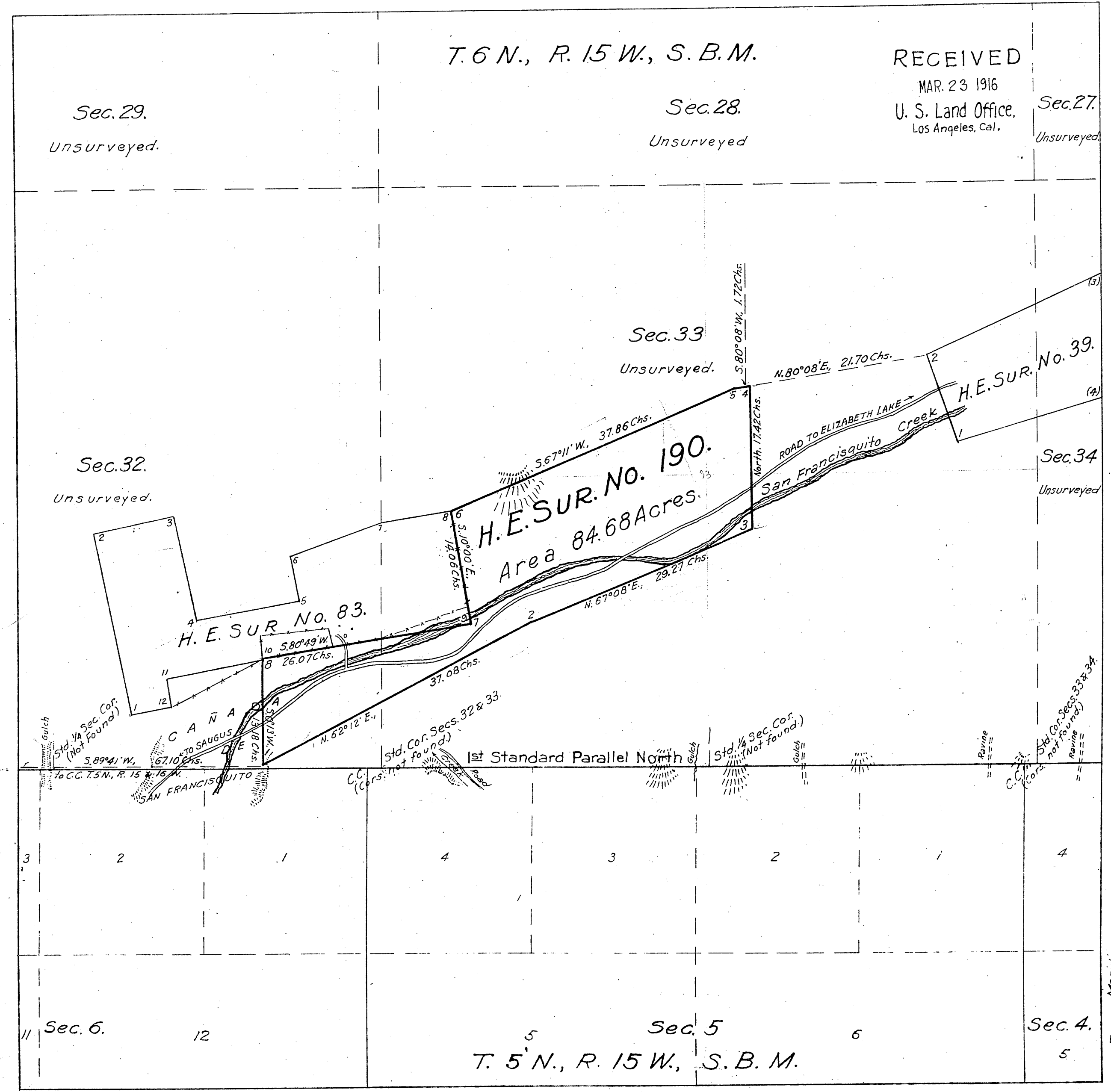
This plat of Homestead Entry Survey No. 190 situated in Sections 32 & 33 unsurveyed, in Township 6 North of Range 15 West, and in Section surveyed, in Township of Range and in Section surveyed, in Township of Range and in Section surveyed, in Township of Range of the San Bernardino Meridian is strictly conformable to the field notes of the Survey thereof, on file in this office, which have been examined and approved.

Office of U.S. Surveyor General,  
San Francisco, California.  
December 4, 1915.

*Frank H. Gould*  
U.S. Surveyor General  
for California.

RECEIVED  
MAR. 23 1916  
U. S. Land Office,  
Los Angeles, Cal.

T. 6 N., R. 15 W., S. B. M.



Scale  
10-Chains equal 1 inch

Initials  
U.G.  
Exam. by F.E.B.

FORM 85-A

Surveys Designated	By Whom Surveyed	Instructions or Contracts		When Surveyed		Date of Approval
		No.	Date	Bequn	Completed	
H.E. Survey No. 190.	Wm. H. Friedhoff, Mineral Examiner, Forest Service		March 8, 1915	March 22, 1915	April 3, 1915	Dec. 4, 1915
H.E. Survey No. 83.	Percy L. Day, National Forest Examiner, Forest Service		November 1, 1913	March 25, 1914	March 27, 1914	July 7, 1914
H.E. Survey No. 39.	Legrand Friel, U.S. Deputy Surveyor.		May 19, 1910	Sept. 17, 1910	Sept. 18, 1910	January 30, 1911
1st Std. Parallel N.	W. H. Norway.		October 10, 1879	1879		March 10, 1880

Areas	
H. E. Survey No. 190.	Conflicts
In Sections 32 & 33	84.68
In Section	
In Section	
Total	84.68

List No. 5-2263. Date, June 14, 1914.  
Act of June 11, 1906; Act of June 30, 1914.  
Latitude 34° 33' N. At N.W. Cor. T. 5 N.,  
Longitude 118° 30' W. R. 15 W.  
Mean Mag. Decl. 16° 00' E.

Traced by E.G.P. May 4, 22  
Checked by H.L. Mag 4-22

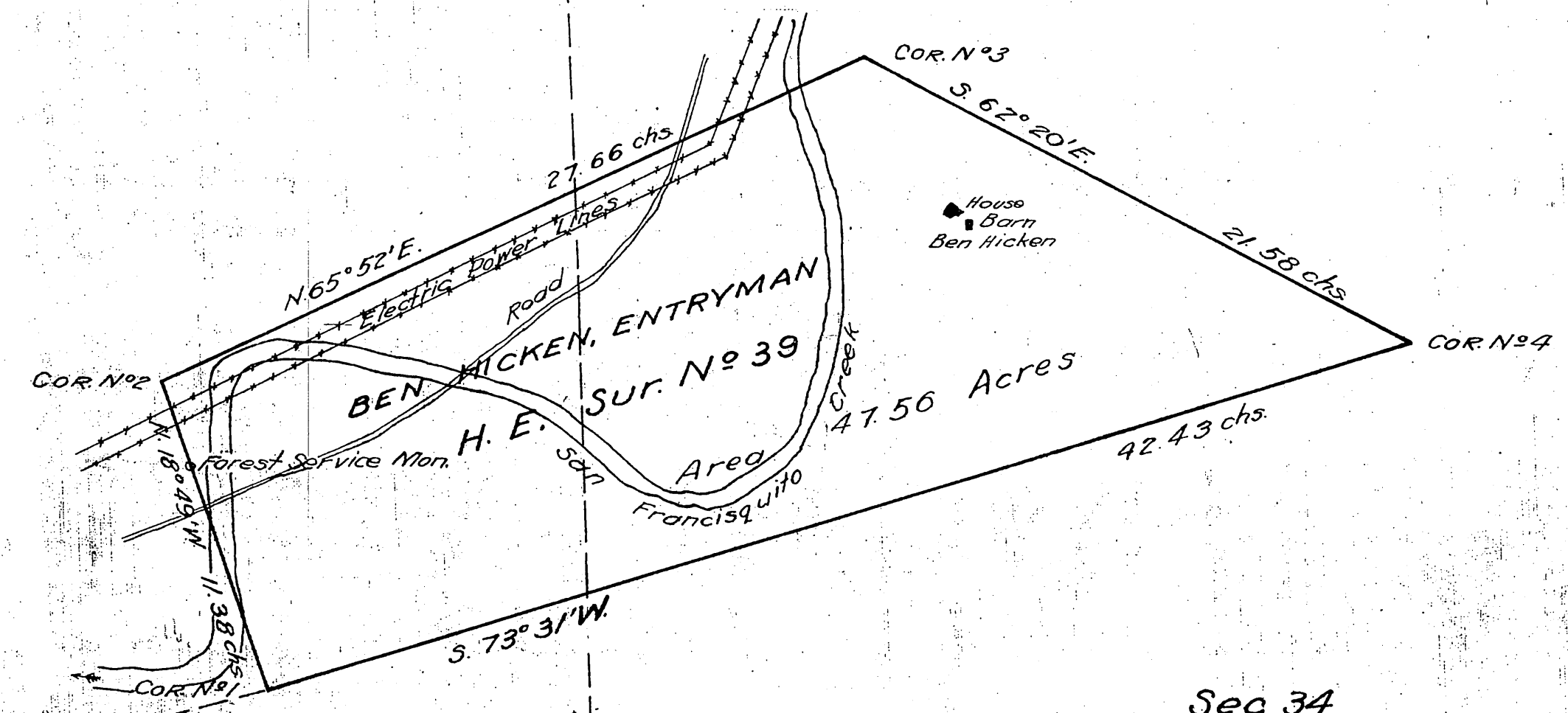
RECEIVED  
 AUG. 18. 1911  
 U.S. Land Office  
 Los Angeles, Cal.

T. 6 N., R. 15 W., San Bernardino Meridian, California.

09135 T. 6 N.,  
 R. 15 W.  
 3/15/10  
 A. 3820

PLAT  
 OF  
 HOMESTEAD ENTRY N<sup>o</sup> 09135  
 Dated March 15, 1910.  
 BEN HICKEN, ENTRYMAN  
 List N<sup>o</sup> 5-142, dated December 29, 1909.  
 SANTA BARBARA NATIONAL FOREST  
 LOS ANGELES LAND OFFICE, CALIFORNIA.  
 Approximate Secs. 33 and 34, T. 6 N., R. 15 W., S. B. M.  
 Surveyed by Legrand Friel, U. S. Deputy Surveyor  
 Under Special Instructions, dated May 19, 1910.

Scale: 5 chains to the inch.



Sec 33  
 N. W. Cor. T. 5 N., R. 15 W., S. B. M.  
 S. 75° 12' 44" W. 155.30 chs.

Sec 34

AREA  
 Total area of H. E. Sur. N<sup>o</sup> 39, 47.56 Acres

The above plat of Homestead Entry N<sup>o</sup> 09135, designated as H. E. Sur. N<sup>o</sup> 39, on unsurveyed land in Township N<sup>o</sup> 6 North, Range N<sup>o</sup> 15 West, San Bernardino Meridian, California, is strictly conformable to the field notes of the survey thereof, on file in this office, which have been examined and approved  
 U. S. Surveyor General's Office,  
 San Francisco, California.  
 January 30, 1911

E. H. Archer  
 U. S. Surveyor General for California

