

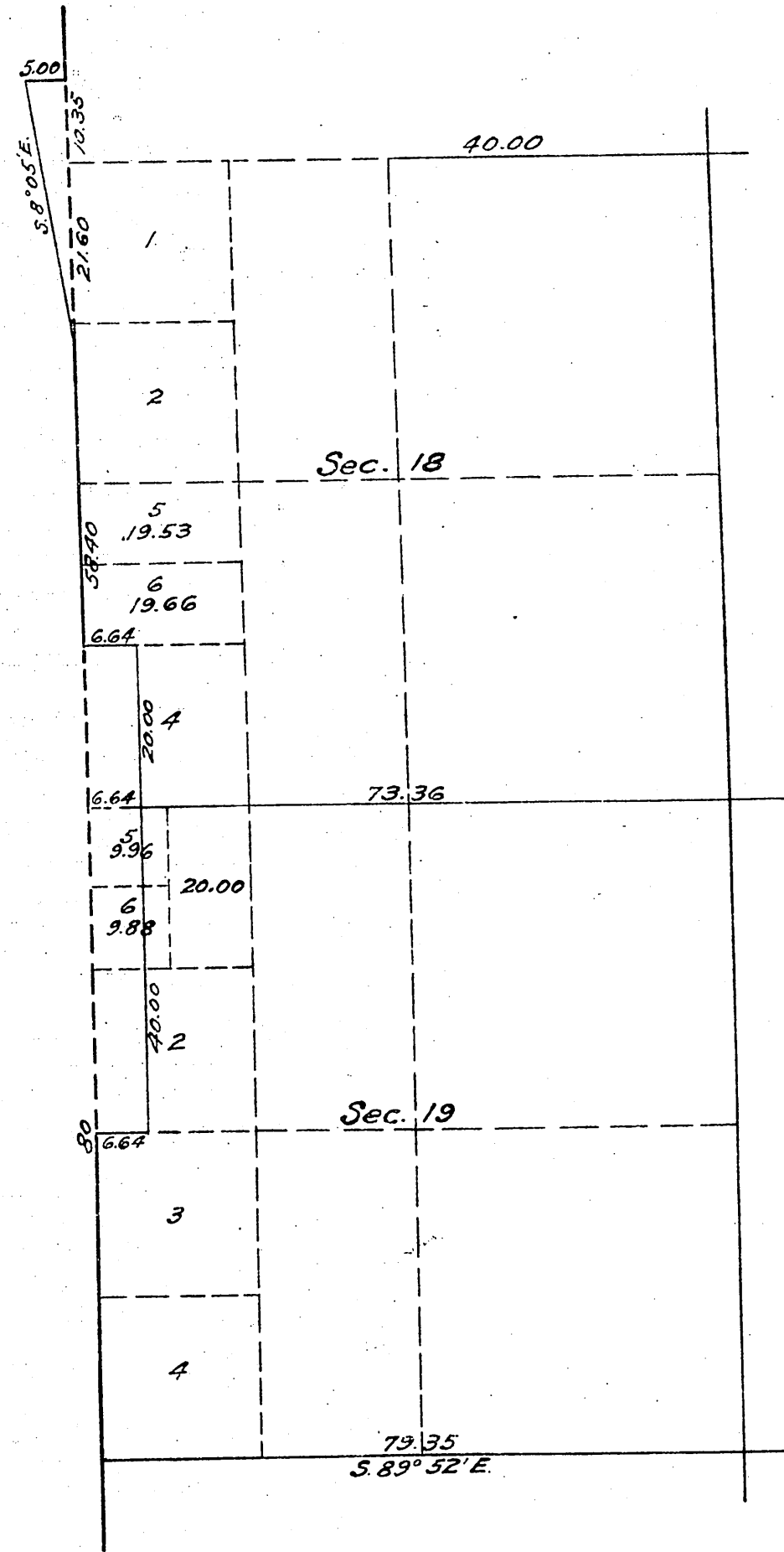
T. 6 N.,
R. 17 W.

①

(4-675 b)

Accepted G.L.O. April 23, 1921

Supplemental Plat of Sections 18 and 19,
Township N^o 6 North, Range N^o 17 West, San Bernardino Meridian, California.



This supplemental plat is authorized by the Commissioner of the General Land Office by letter Los Angeles 027789-027803 "E" WJL dated March 18, 1921.

This supplemental plat, showing the subdivision of lot 3, section 18 and lot 1, section 19, T. 6 N., R. 17 W., San Bernardino Meridian, California, plat approved September 16, 1880, is made for the purpose of obtaining the area and legal description of the subdivisions thereof to accommodate homestead entry Los Angeles 027789-027803 of John H. Allen, which embraces portions of above lots, and is hereby approved.

U.S. Surveyor General's Office
San Francisco, California.
March 28, 1921.

Louis H. Moore
U.S. Surveyor General for California.

Filed in U.S. Land Office
Los Angeles, Cal.
MAY 7, 1921.

R. J. Hoover
Register.

Scale 20 chains to an inch.

TRUE MERIDIAN

Copied by - R.F.F. 7-31-23
Checked by - H.G. 6-10-24

