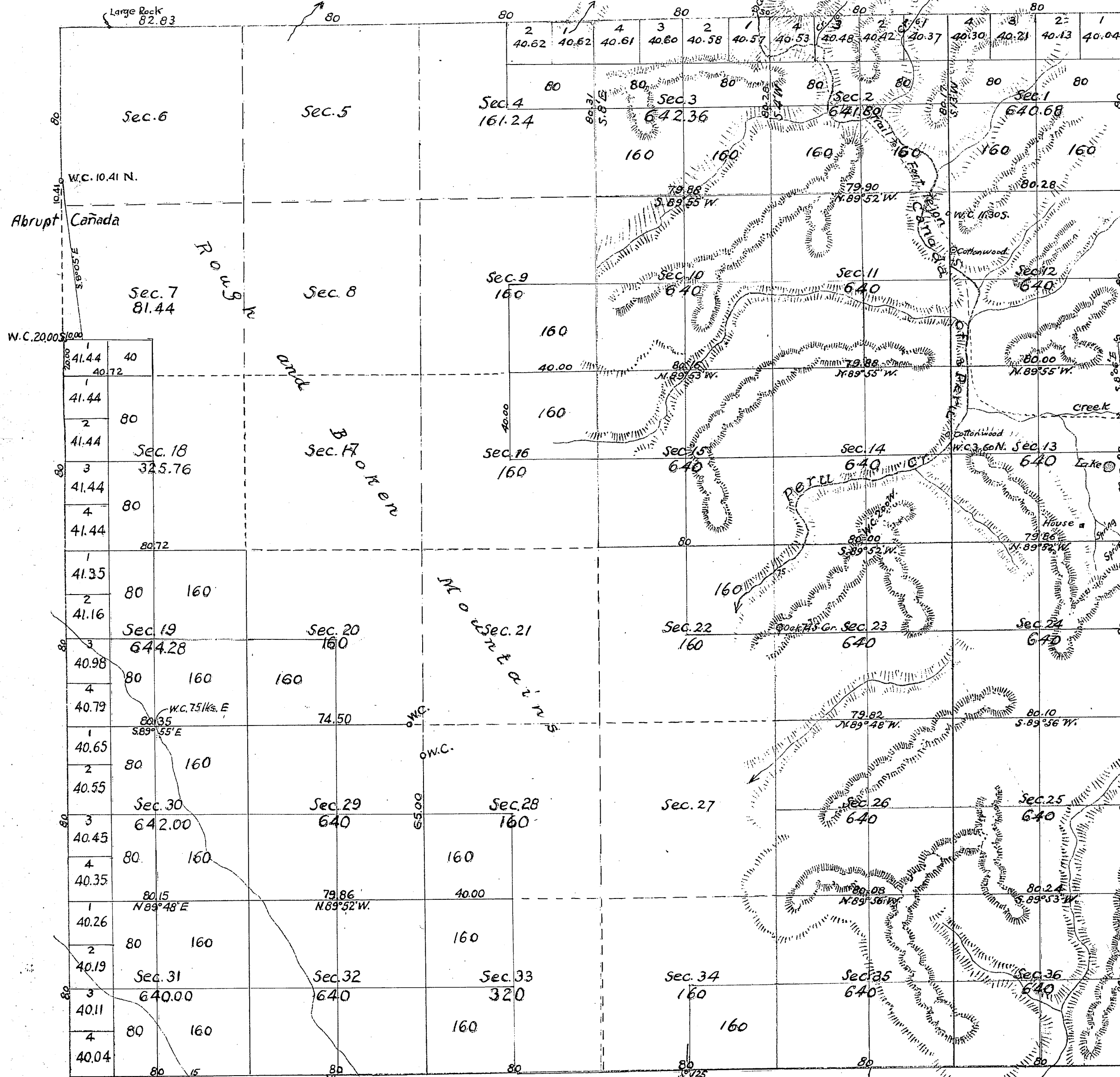


Township N° 6 North, Range N° 18 West, San Bernardino Meridian.

T6N  
R18W



All of Township  
included within Pine  
Mountain + Yucca Lake  
Forest Reservation,  
Proclamation of President  
March 2, 1898.  
Comm. Letter P  
March 18, 1898

Aggregate Area of Public Land surveyed 14,660.16 Ac.  
Estimated " " Unsurveyed Land 8,430.00 "  
Aggregate 23,090.16 "

All East of Blue Line in 20 mile RR. limits

Recd and filed in the U. S. Land  
Office Los Angeles Cal  
December 17 1880

Register  
Part of Interior lines C.S. 9195  
South boundary of Twp. C.S. 9374  
1st Standard Parallel North - C.S. 9402

Aggregate Area of Public Lands surveyed 14,660.16 acres  
Estimated " " Mountain " Unsurveyed 8,430.00 "  
aggregate 23,090.16 "

The above Map of Township No. 6 North, Range No. 18 West, San Bernardino Meridian  
is strictly conformable to the field notes of the surveys thereof, on file in  
this Office, which have been examined and approved.  
U.S. Surveyor General's Office,  
San Francisco, California. *Thos. Wagner*  
September 16<sup>th</sup> 1880  
Surv. Gen'l. Cal.

Surveys Designated	By whom surveyed	Date of Contract	Amount of Surveys	When Surveyed
South Boundary of Township	G.S. Collins	October 21 <sup>st</sup> 1879		1879
Rest of Township Lines	W.H. Norway	October 10 <sup>th</sup> 1879	18 mls. 2 chs. 83 lks.	1880
Section and other legal subdivision Lines	"	"	39 " 62 " 26 "	May 2 <sup>nd</sup> 1880