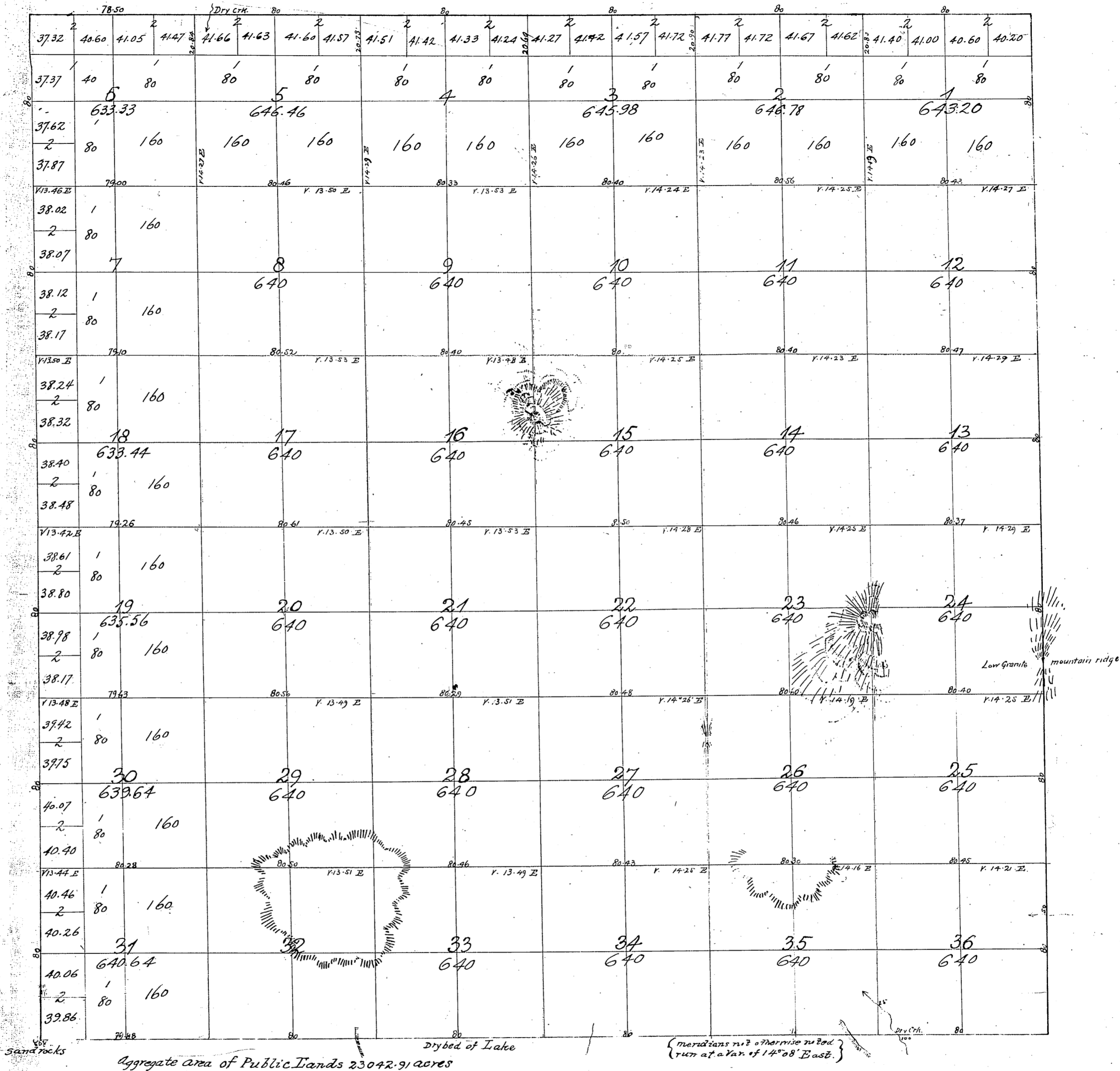


Township N^o VII North

Range N^o IX West

San Bernardino Meridian.

T7N
R9W
①



Aggregate area of Public Lands 23042.91 acres

Surreys Designated	By Whom Surveyed	Date of Contract	Amount of Surreys Miles Chs. Acs	When Surveyed
Township Lines	Ralph W. Norris	December 23 rd 1854	23 78 38	1855
Section	"	October 19 th 1855	80 12 02	1856

Signed: John C. Hayes
Surr. Genl. Cal.

For Sec. 20-28 & 33 C.S. 9112
For E. Bdy. Twp. see C.S. 9137
For N. bdy " " C.S. 9151
" In t. sec. notes. see C.S. 9166

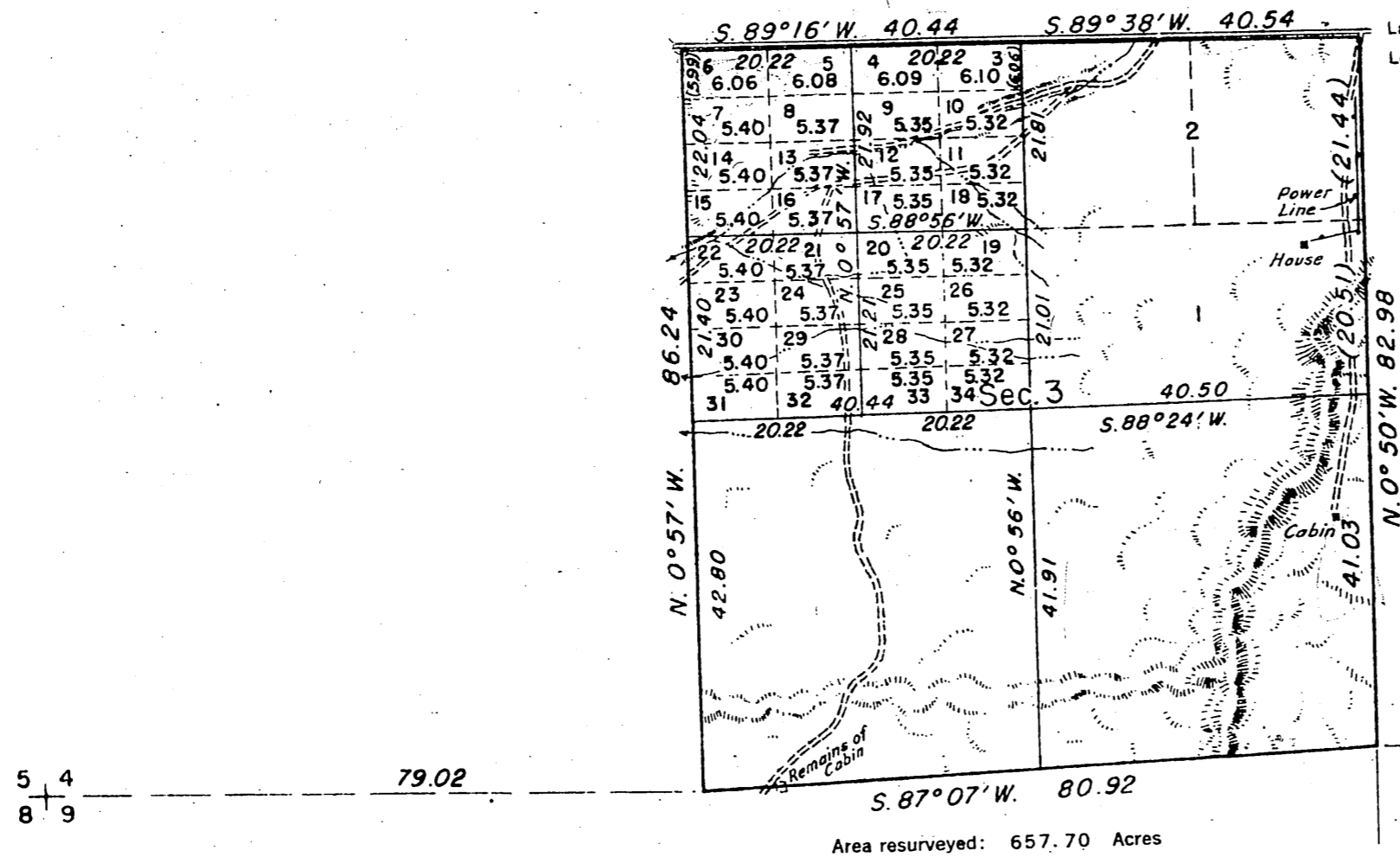
C.S. 9214 - West Bdy & part of South Bdy

TOWNSHIP 7 NORTH, RANGE 9 WEST, OF THE SAN BERNARDINO MERIDIAN, CALIFORNIA.

DEPENDENT RESURVEY AND SUBDIVISION OF SECTION 3



Mean magnetic declination
15° 15' E



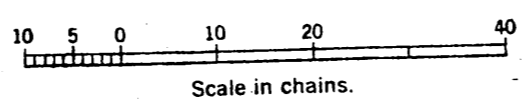
Latitude 34° 44' 00" N.
Longitude 117° 48' 30" W.

This plat represents a retracement and reestablishment of the boundaries, and a survey of the subdivision of section 3 designed to restore the corners in their original locations according to the best available evidence, and the lotting and areas are as shown on the plat approved June 19, 1856, except where new areas are shown hereon.

Resurvey authorized by Bureau of Land Management letter 2028812 "E", dated June 18, 1947.

Boundaries of section 3 surveyed by Ralph W. Norris in 1855 and 1856.

Area resurveyed: 657.70 Acres



For Gov't Field Notes, See C.S.9439

UNITED STATES DEPARTMENT OF THE INTERIOR
BUREAU OF LAND MANAGEMENT

Washington, D. C., June 13, 1949

This plat is strictly conformable to the approved field notes, and the survey, having been correctly executed in accordance with the requirements of law and the regulations of this Bureau, is hereby accepted.

For the Director
William F. Richards
Chief, Branch of Surveys.

Survey executed by Dupree R. Averill, Cadastral Engineer, November 14 to November 20, 1947, pursuant to special instructions for Group No. 355, dated July 29, 1947.