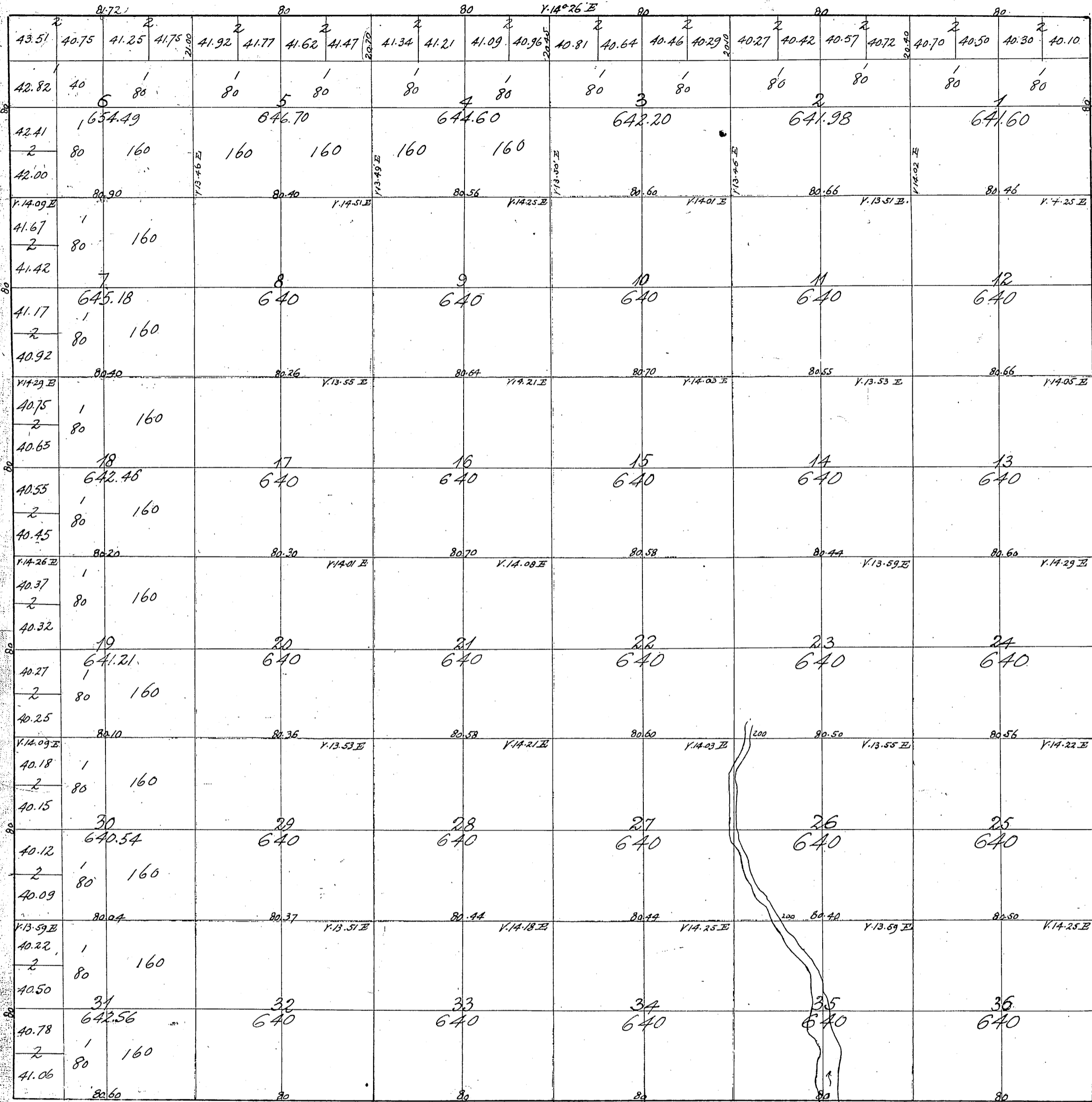


Township N^o VII North

Range N^o XI West

San Bernardino Meridian.

T7N
R11W
①



Aggregate Area of Public Lands 23,083.52 acres.

Meridian lines run at a Var. of 14° 12' East.

Blue lines run and paid for under former Contract.

Surveys Designated	By Whom Surveyed	Date of Contract	Amount of Survey Meters Chs. Lks	When Surveyed
West boundary of Township East	Ralph W. Norris	October 12 th 1853	6 00 00	Resurvey 1856
North & South Section Lines	" " "	December 23 rd 1854	6 00 00	1855
	" " "	October 19 th 1855	12 02 32	1856
	" " "	" " "	60 17 15	"

Signed:-

John C. Hays
Surr Genl Cal.

For W. bdy. Twp. see C.S. 9116
For N, W & S B'dys. and all interior section lines see C.S. 9121