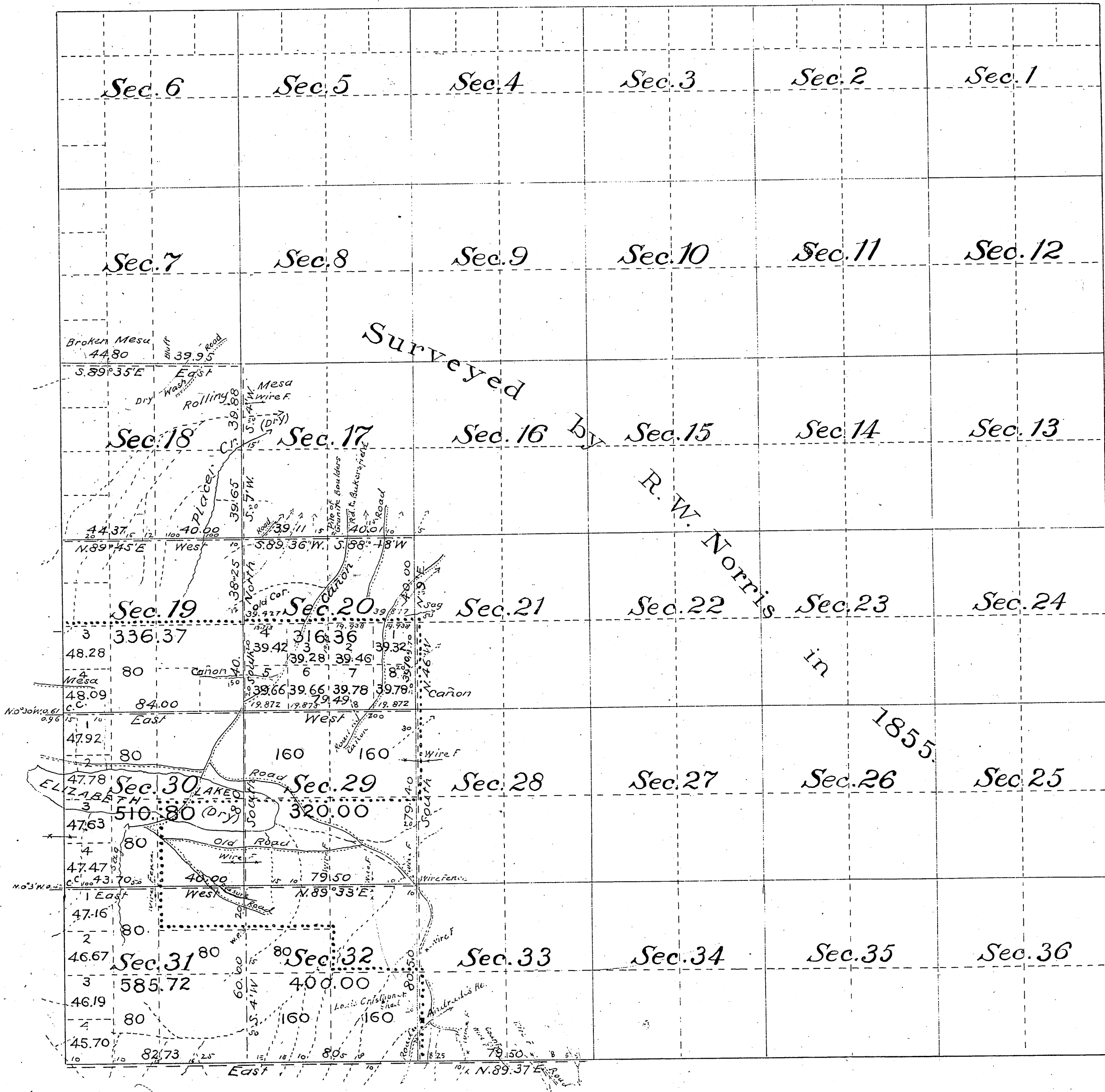


Township N<sup>o</sup>7 North, Range N<sup>o</sup>14 West, San Bernardino Meridian, California.

T7N  
R14W

①



July 25 '03  
To be filed Aug 25/03

Public Land previously surveyed 20,598.94 Acres  
" " Surveyed by Geo. W. Pearson 2,469.25 "  
Aggregate 23,068.19 "

Filed in U. S. Land Office, Los Angeles, Cal. Aug. 25 - 1903  
A. J. Crosshank, Register

The line of demarcation between the areas previously counted in total acreage surveyed and the new surveys, is indicated thus .....

all west of blue line, within Pine Mountain & Yucca Lake Forest Reserve, Proclamation of President June 29, 1898.

For S & E B'dy of Twp. see 9120  
For N & W B'dys of Twp. & all interior lines C.S. 9123  
Former B'dy. Santa Barbara Natl. Forest C.S. 9125  
South line of Sec. 31, 32 and 33 - C.S. 9404

Lat. 34° 40' N. } at S. E. Cor. of Sec. 32  
Long. 118° 18' W. }  
Magn. Decl'n. 14° 36' E.

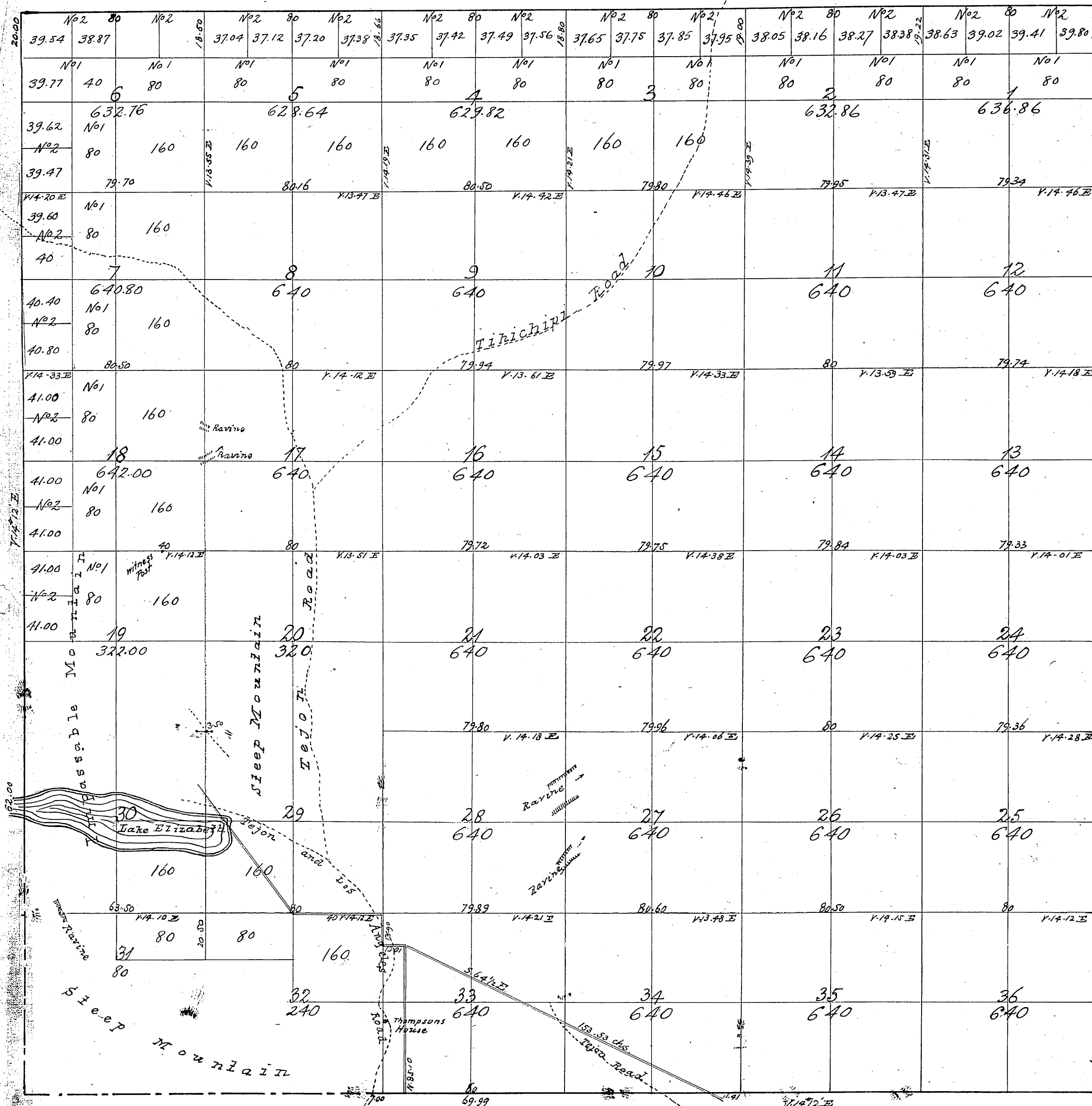
Surveys Designated	By whom surveyed	Contract		Amount of Surveys			When Surveyed
		No.	Date	Mis.	chs.	Lks.	
Lines previously surveyed, exhibited on Map approved February 19, 1856.							
West B'dy. of Twp., Part re-surveyd.	W. H. Norway		Aug. 25, 1884				1884
" " "	C. A. Ensign	50	May 28, 1889				1890
Part of South B'dy. of Twp.	W. H. Norway		Aug. 25, 1884				1884
Part of south B'dy. of Twp. re-surveyd.	Geo. W. Pearson	173	April 8, 1901	3	02	23	1901
Section Lines re-surveyed	"	"	"	10	20	75	1901
" " New	"	"	"	3	71	56	June 8, 1901
Connecting Lines	"	"	"			1	99

The above Map of Township N<sup>o</sup> 7 North, Range N<sup>o</sup> 14 West, San Bernardino Meridian, California, is strictly conformable to the field notes of the surveys thereof, on file in this office, which have been examined and approved.  
U. S. Surveyor General's Office,  
San Francisco, California.  
August 29<sup>th</sup> 1902.

W. S. Graham  
U. S. Surveyor General for California

Township N<sup>o</sup> VII North Range N<sup>o</sup> XIV West of the San Bernardino Meridian.

T 7 N  
R 14 W  
②



Aggregate Area of Public Lands Surveyed  
 Estimated of Mountain unsurveyed 20,538.94 Acs  
 2,410.00 "  
 Aggregate 23,008.94 "

C.S. 9206 - East line of Secs. 5, 8, 17, 20, 29 & 32 and N. line of Secs. 5 & 6

Lines colored Blue run and paid for under former contract

Surveys Designated	By whom Surveyed	Date of Contract	Amount of Surveys			When Surveyed
			Mls.	chs.	fts.	
North boundary of Township	Ralph W. Norris	October 12 <sup>th</sup> 1853	6	00	00	(Resurvey) 1858
part of Section Lines	"	"	0	53	90	"
Transverse Lines	"	"	3	56	74	1853
Part of Township Lines	"	December 23 <sup>rd</sup> 1854	14	69	00	1855
Section	"	"	55	70	38	"

Signed:

John C. Hays  
 Surv. Gen'l Cal.

- For N. Line Sec. 5 & 6 — C.S. 9106
- " lines Secs. 30-31-32 " 9108
- " S & E Bdy Twp see " 9120
- For N & W Bdys. of Twp. & all interior lines " 9123

Former Bdy. Santa Barbara National Forest - See " 9125.  
 Bdy. line of the San Gabriel National Forest. C.S. 9389