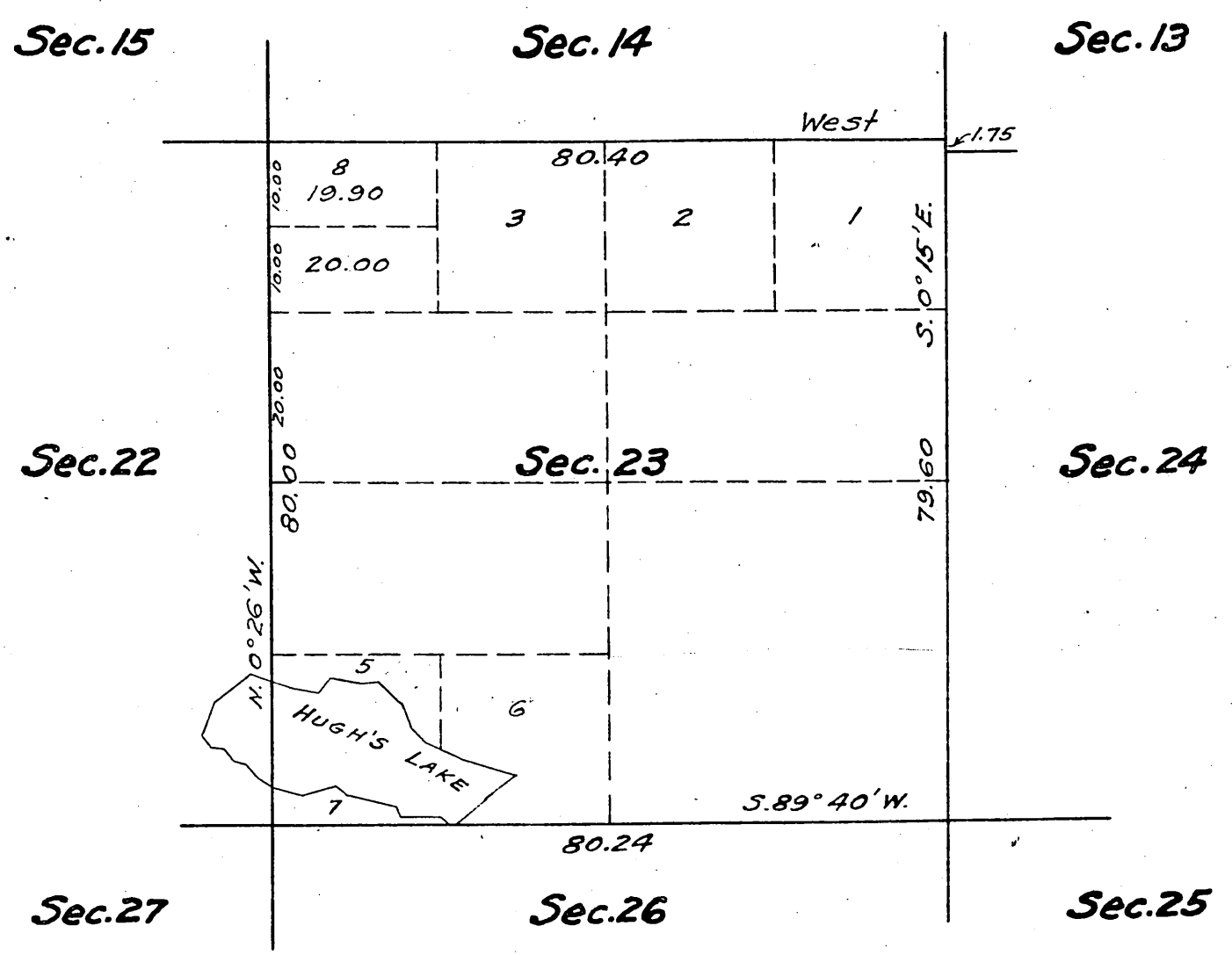


(4-675 a)

Supplemental Plat of Section 23,
Township N°7 North, Range N°15 West, San Bernardino Meridian, California.

Scale: 20 chains = 1 inch.



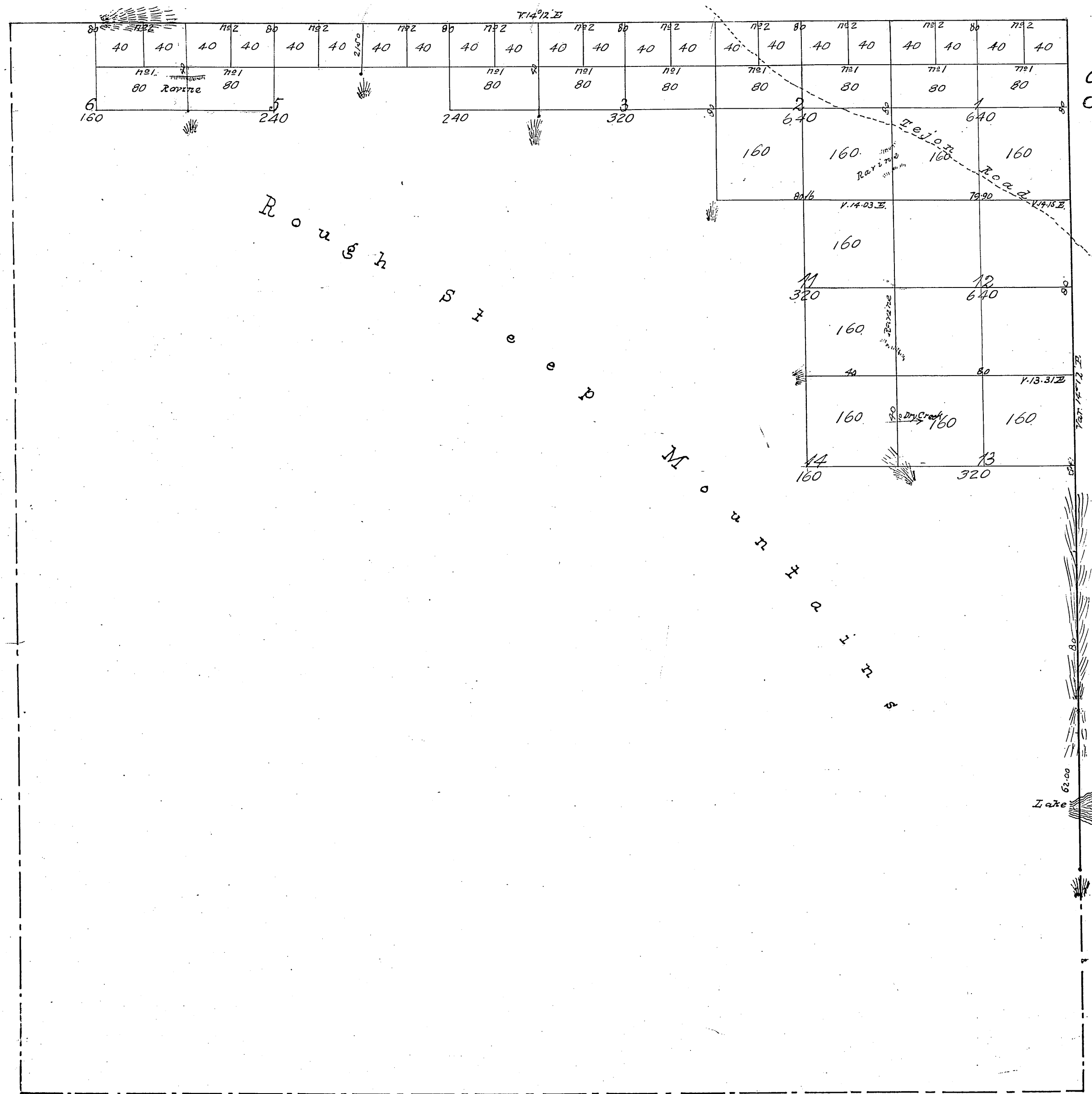
NOTE:
This supplemental plat is authorized by letter 'E' dated March 24, 1916, and is for the purpose of furnishing a proper description in patent to Frank R. Myrick, Los Angeles 013503.

Filed in U.S. Land Office,
Los Angeles, Cal.
APR. 22, 1916.

John D. Roche
Register.

TRUE MERIDIAN

Gov't. Field Notes (3)
C.S. 9091 - Bet. Sec's. 13 & 14 and 11 & 14
C.S. 9458



Meridians are run on a Var. of 14° 12' East.

Surveys Designated	By Whom Surveyed	Date of Contract	Amount of Surveys	When Surveyed
Township Lines	Ralph W. Norris	December 23 rd 1854	Miles Chs. Acs	1855
Sections	" " "	" " "	8. 2/ 56	"

Aggregate Area of Public Lands surveyed 3,680.00 Acres.
Estimated " " Mountain " Unsurveyed 19,360.00 "
23,040.00 "

Signed:-
John C. Hays
Surr. Genl. Cal.

