

Field notes of Traverse in Townships T7N R. 16 W.

| N ^o | Course | Distance |
|--|------------|--|
| Beginning at Cor. to Sec. 19, 20, 29 & 30 in T7N R. 16 W. and thence along the line of the Rancho La Liebre. | | |
| 1 | South | 110.00 |
| 2 | East | 26.00 |
| 3 | South | 80.00 |
| 4 | S. 43° E. | at 54.70 Chains intersects South boundary of Township, thence through T7N-R. 16 W. |
| | | 108.50 |
| 5 | S. 45° E. | 28.28 |
| 6 | South | 20.64 |
| Thence beginning at Cor. to Sections 3, 4, 9 & 10 T7N-R. 16 W. | | |
| 7 | S. 64½° E. | 25.91 |
| 8 | East | 18.00 |
| 9 | S. 62½° E. | 5.00 |
| 10 | S. 45° E. | 8.00 |
| 11 | East | 8.52 |
| 12 | South | 20.87 |
| 13 | East | 60.00 |
| 14 | North | 20.00 |

Aggregate of Traverse line 469.72 = 5 miles 69 ch. 72 ds. Note. This Traverse is not charged in present account

Aggregate area of Public Lands Surveyed 1360.00 acres
Estimated " " " mountains unsurveyed 21680.00 "
Aggregate 23040.00 "

North Bdy. of Twp. C.S. 9395
Bdy. line of the San Gabriel National Forest- C.S. 9389.
For Field Notes see C.S. 9110
For E Bdy of TWP C.S. 9114

Variation 14° 15' East

C.S. 9206 - North Bdy. of Twp.

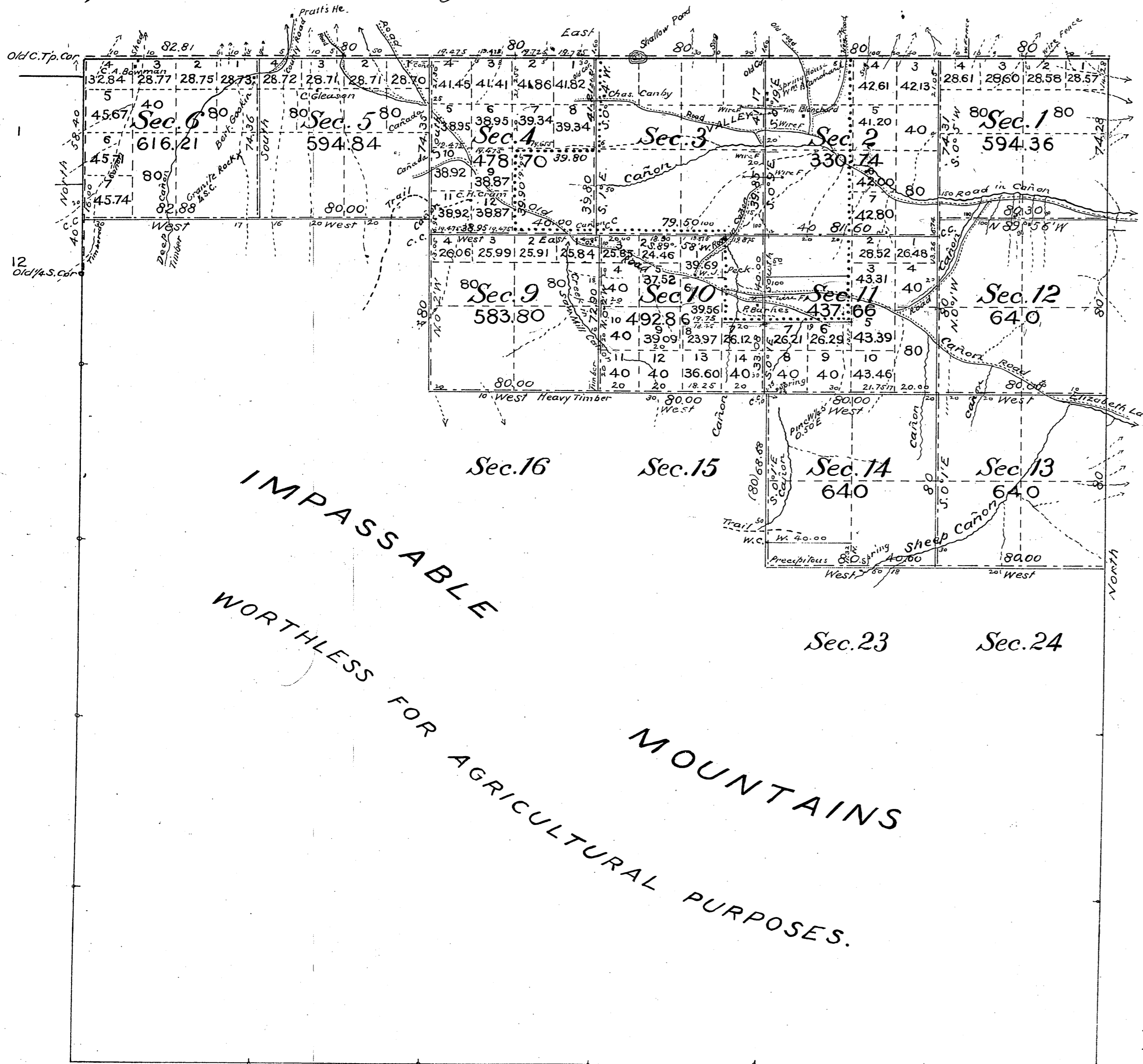
Filed April 9th 1870
H.C. Austin
Register

Signed:
E.T. Beale
U.S. Surv. Gen'l. Cal.

| Surveys Designated | By Whom Surveyed | Date of Contract | Amount of Surveys | When Surveyed |
|------------------------|--------------------|---|-----------------------|-------------------------------|
| Section lines | George H. Thompson | Instructions dated October 1 st 1862 | 1 mile 40 ch. 00 lbs. | October 24 th 1862 |
| Traverse | " " | " " " " | 5 miles 69. 72 " | " " " |
| Township lines | George H. Thompson | July 13, 1863 | 1 mile 40. 00 " | July 23 ^d . 1863 |
| Section lines (yellow) | " " | " " " " | 1 " 40. 00 " | " " " |

Township N^o 7 North, Range N^o 16 West, San Bernardino Meridian, California.

T 7 N
R 16 W
②



all of Township within Pine Mountain + Yaca Lake Forest Reserve, Proclamation of President June 29, 1898.

July 25 '03

To be filed Aug 25/03

| | |
|--|-----------------------|
| Public Land previously surveyed | 1,360.00 Acres |
| " " surveyed by Geo. W. Pearson | 6,049.17 " |
| Total Area of Public Land | 7,409.17 Acres |
| Estimated Area of unsurveyed Mountain Land | 15,093.83 " |
| Aggregate | 22,503.00 " |

The line of demarcation between the areas previously counted in total acreage surveyed and the new surveys, is designated thus

Areas previously returned, are surveyed by Geo. H. Thompson in 1862 and 1863.

Filed in U. S. Land Office
Los Angeles, Cal. Aug 25, 1903
A. J. Brookshank,
Register

Lal. 34° 42' N. } in N.W. 1/4 Sec. 11
Long. 118° 32' W.
Mean Decl'n. 15° 34' E.

For Field Notes C.S. 9110
North Bdy. of Twp. C.S. 9395

| Surveys Designated | By whom Surveyed | Contract | | Amount of Surveys | | | When Surveyed |
|--|------------------|----------|---------------|-------------------|------|-------|---------------|
| | | No | Date | Mts | Chs. | L'ks. | |
| Lines previously surveyed exhibited on Map approved August 12, 1863. | | | | | | | |
| West Boundary of Township | W. H. Norway | | Oct. 10, 1879 | | | | 1880 |
| Rest of Township Lines | " | | Aug. 25, 1884 | | | | 1884 |
| East Boundary of Tp. Re-surveyed | C. A. Ensign | 50 | May 28, 1889 | | | | 1890 |
| North " " " Re-surveyed | Geo. W. Pearson | 173 | April 8, 1901 | 6 | 02 | 81 | 1901 |
| Part of West Bdy " " " | " | " | " | 1 | 18 | 40 | " |
| Section Lines Re-surveyed | " | " | " | 3 | 02 | 03 | " |
| " " " New | " | " | " | 19 | 52 | 23 | Sept 7th 1901 |
| Connecting Lines | " | " | " | | 32 | 29 | " |

The above Map of Township N^o 7 North, Range N^o 16 West, San Bernardino Meridian, California, is strictly conformable to the field notes of the surveys thereof, on file in this Office, which have been examined and approved.
U. S. Surveyor-General's Office,
San Francisco, California
August 29, 1902.

W. S. Graham
U.S. Surveyor-General for California.

TOWNSHIP NO. 7 NORTH . RANGE NO. 16 WEST . SAN BERNARDINO MERIDIAN . CALIFORNIA .

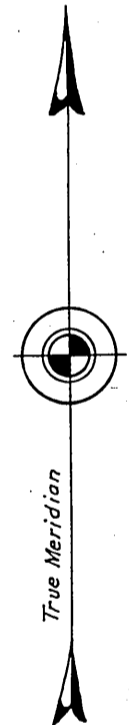
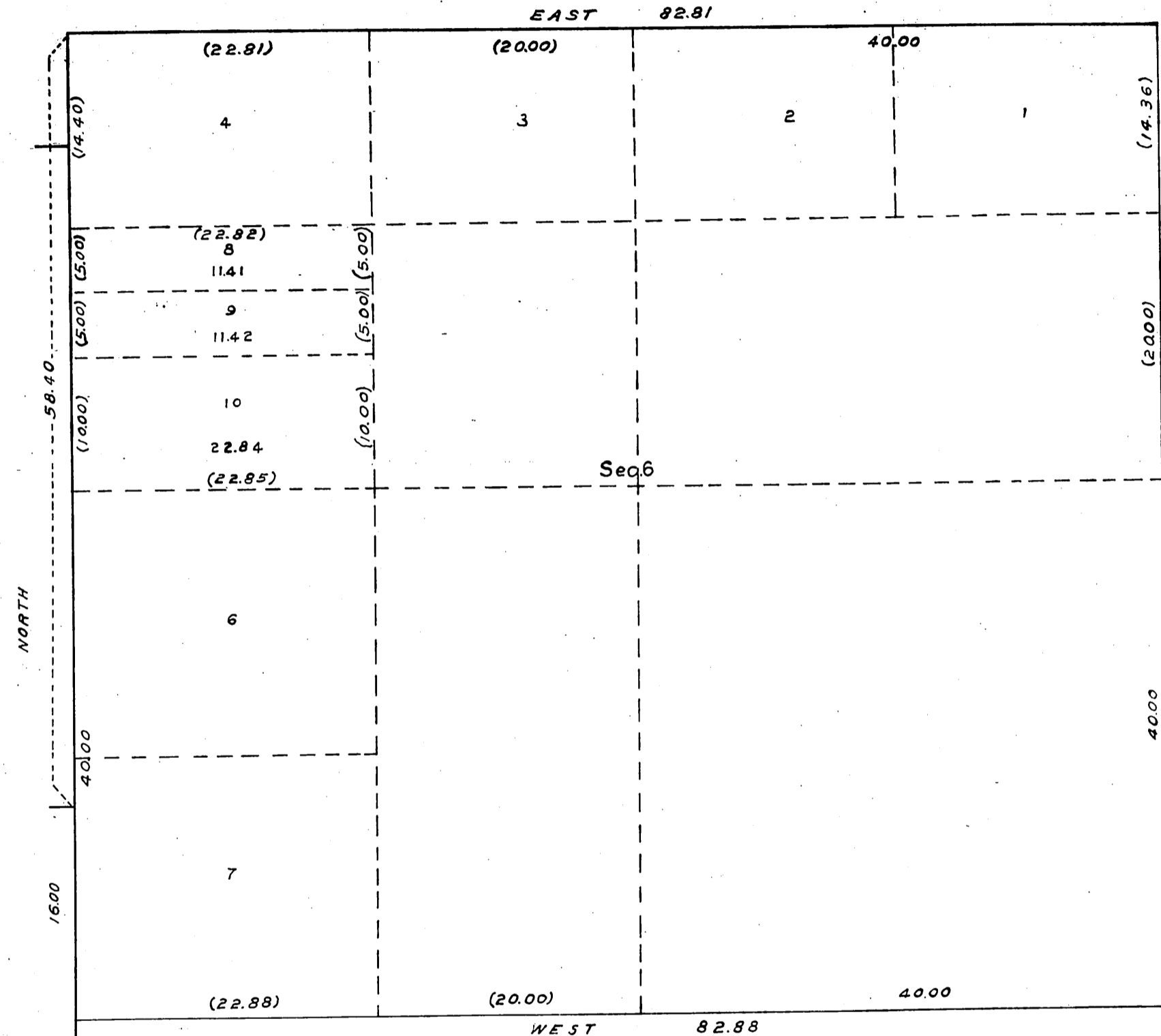
SUPPLEMENTAL PLAT OF SECTION 6.

Skt-73
A-122

RECEIVED

JUL 27 1928

U. S. Land Office,
LOS ANGELES, CAL.



Scale: 10 Chains to an Inch.

Public Survey Office
San Francisco, California, June 13, 1928.

The above supplemental plat of Sec. 6, Township No. 7 North, Range No. 16 West, of the San Bernardino Meridian, California, based upon the plat approved August 29, 1902, showing a subdivision of original lot 5, to accommodate an exchange of lands within the Angeles National Forest, under the act of March 20, 1922 (42 Stat., 465), prepared in accordance with instructions contained in Commissioner's letter "E" dated June 5, 1928, is hereby approved.

Frank E. Barker
Office Cadastral Engineer.

Filed in U. S. Land Office,
Los Angeles, Cal.
JUL 27 1928
[Signature]
Register.

Department of the Interior
General Land Office
Washington, D. C., July 14, 1928.

The amended lottings represented by this supplemental plat having been correctly made in accordance with the regulations of this office, the plat is hereby accepted.

Shooc Havell
Assistant Commissioner.