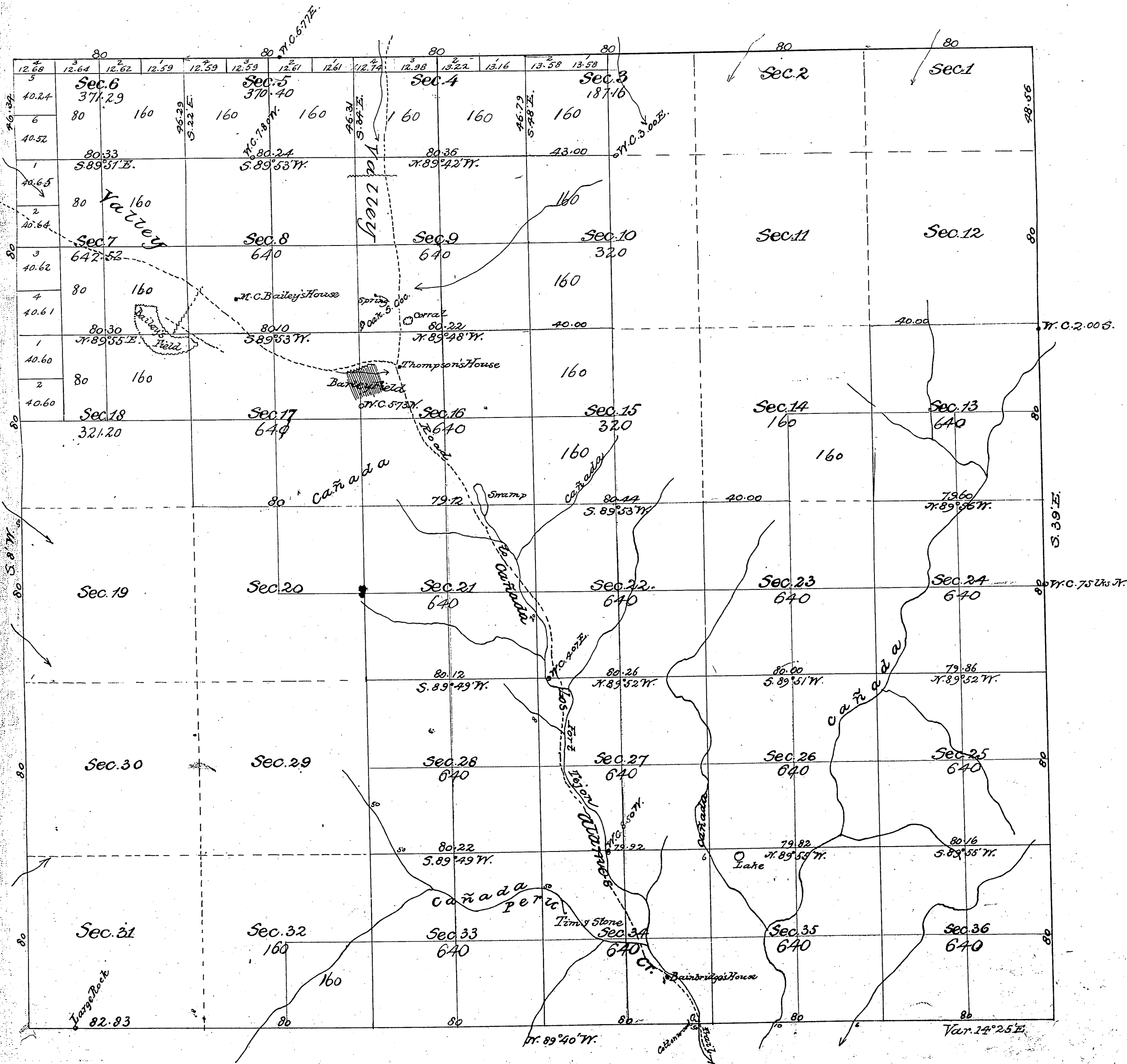


Township N^o 7 North, Range N^o 18 West, San Bernardino Meridian.



Aggregate Area of Public Land surveyed — 14,084.97 Acres
 Estimated " " Unsurveyed Land — 7,250.00 "
 Aggregate — 21,334.97 "
 Part of North & part of South Bdy. C.S. 9200
 C.S. 9209 — portion of interior Sec. lines
 West boundary of Township — C.S. 9379

Rec'd & Filed Dec. 17th 1880

Surveys Designated	By whom Surveyed	Date of Contract	Amount of Surveys	When Surveyed
Township Lines	W.H. Norway	Oct. 10 th 1879	23 mls. 17 chs. 73 lbs.	1880
Section "	"	"	40 " 63 " 46 "	June 2 nd 1880

Signed:
 Theo. Wagner
 Surv. Gen'l Cal.