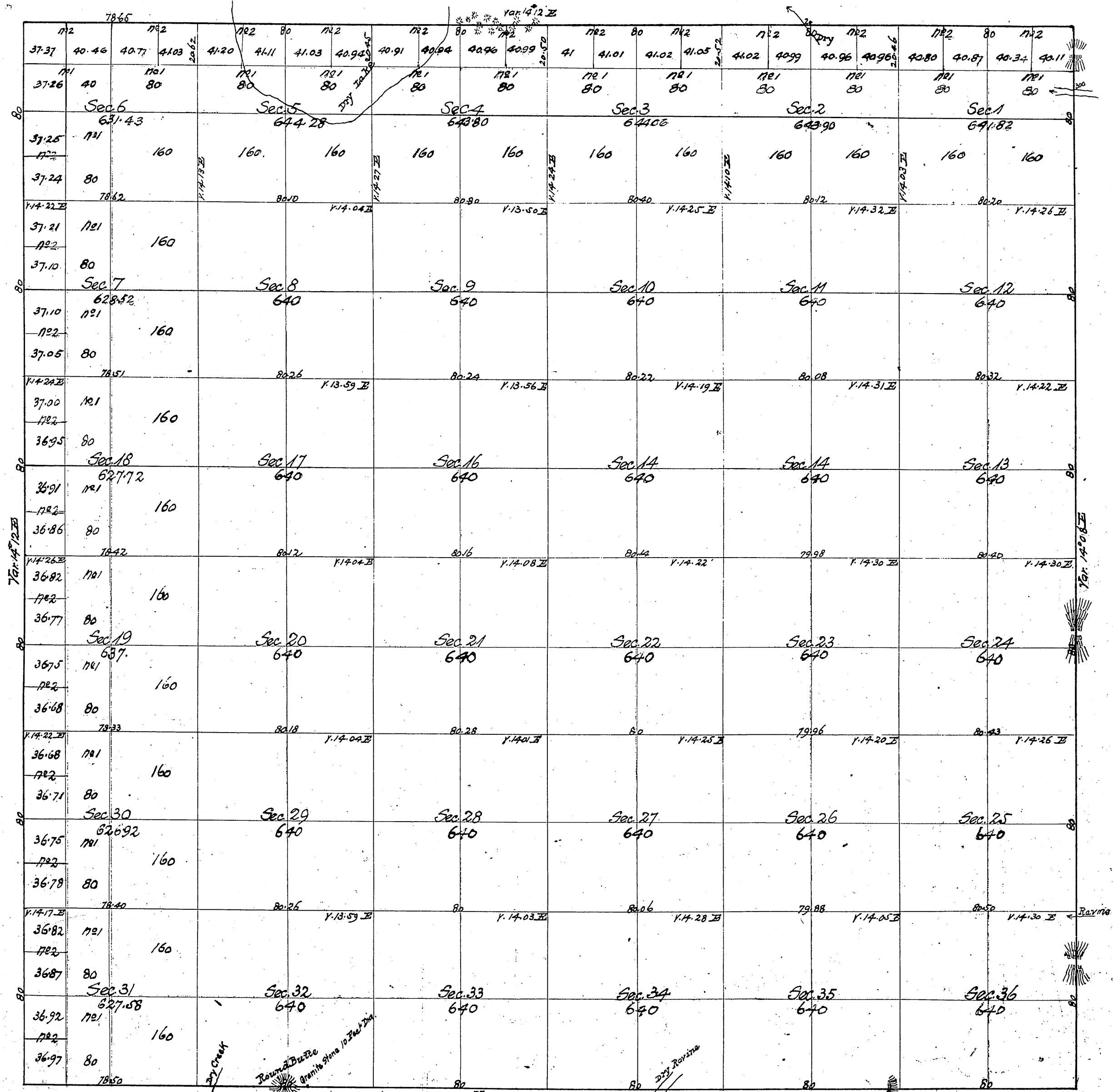


Township N° VIII North

Range N° IX West

San Bernardino Meridian.

T8N  
R9W  
①



Aggregate Area of Public Lands 22,987.03 Acres.

Mendians not otherwise noted run at a Var. of 14° of Base.

Surveys Designated	By Whom Surveyed	Date of Contract	Amount of Surveys	When Surveyed
Township Lines	R. W. Norris	December 23 <sup>rd</sup> 1854	77 23 15	1855
Section	"	October 19 <sup>th</sup> 1855	59 79 32	1856

Signed:  
John C. Hays  
Surv. Gen'l. Cal.

Por. W. Bdy. of Twp. see C.S. 9151  
W. Bdy. of Twp. see C.S. 9135  
N. Bdy. of Twp. see C.S. 9107 (C. L. King)

Signed:  
J. W. Manderville  
Surv. Gen'l. Cal.

C.S. 9124  
Exterior bdy. and subdiv. lines see C.S. 9151  
Portion of interior sec. lines - C.S. 9210

69  
12 4 21 2