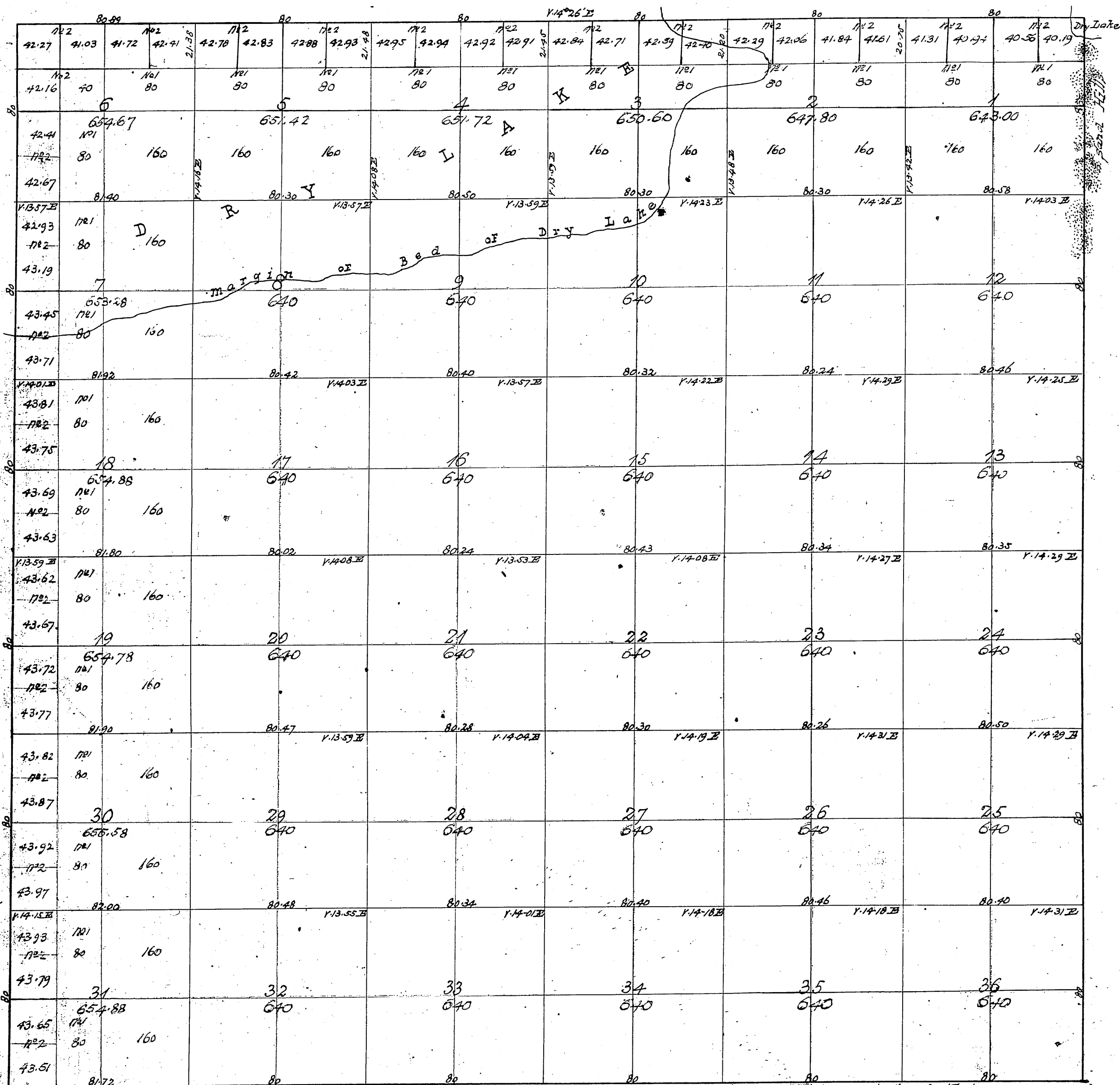


Township N^o VIII North

Range N^o XI West

San Bernardino Meridian.

T8N
R11W
①



Aggregate Area of Public Lands 23,172.61 acres. V. 14° 26' E Meridian Lines, not other misc noted, are run at a Var. 14° 12' East.

| Survey Designated | By Whom Surveyed | Date of Contract | Amount of Survey | When Surveyed |
|---------------------------|------------------|--------------------------------|------------------|---------------|
| East Boundary of Township | Ralph W. Norris | December 23 rd 1854 | 5. 00 00 | 1855 |
| West of Township Lines | " | October 19 th 1855 | 18. 02 61 | 1855 |
| Section | " | " | 60 24 37 | " |

Signed:-
John C. Hayes
Sur. Gen'l Cal.

Wbdy. and subdivision lines C. S. 9147
E. bdy. C. S. 9152

N. Bdy. of Co. Line or Twp sec C. S. 9107
C. S. 9124