

Surveys Designated	By Whom Surveyed	Date of Contract	Amount of Surveys			When Surveyed
			Plots	Chs	Trs	
North boundary of Township	Ralph W. Harris	October 12 <sup>th</sup> 1853	6	00	00	1853 (Approximate)
Rest of Township lines	"	December 23 <sup>rd</sup> 1854	10	35	00	1855
Section lines	"	"	46	43	62	"

S. bdy. Twp. 9 N - R 16 W - C.S. 9408  
 Eddy line of the San Gabriel National Forest - C.S. 9389  
 N. line Sec. 6 and W. line Twp. 9 N. R. 16 W - C.S. 9376  
 C.S. 9102 For exterior & interior bds.  
 C.S. 9107 N. E. Cor. of Twp. 9 N. R. 16 W.  
 C.S. 9114 " " " " " "  
 C.S. 9116 N. " " " "  
 C.S. 9206 S. Bdy of Twp. 9 N. R. 16 W.

Township N<sup>o</sup> 8 North,

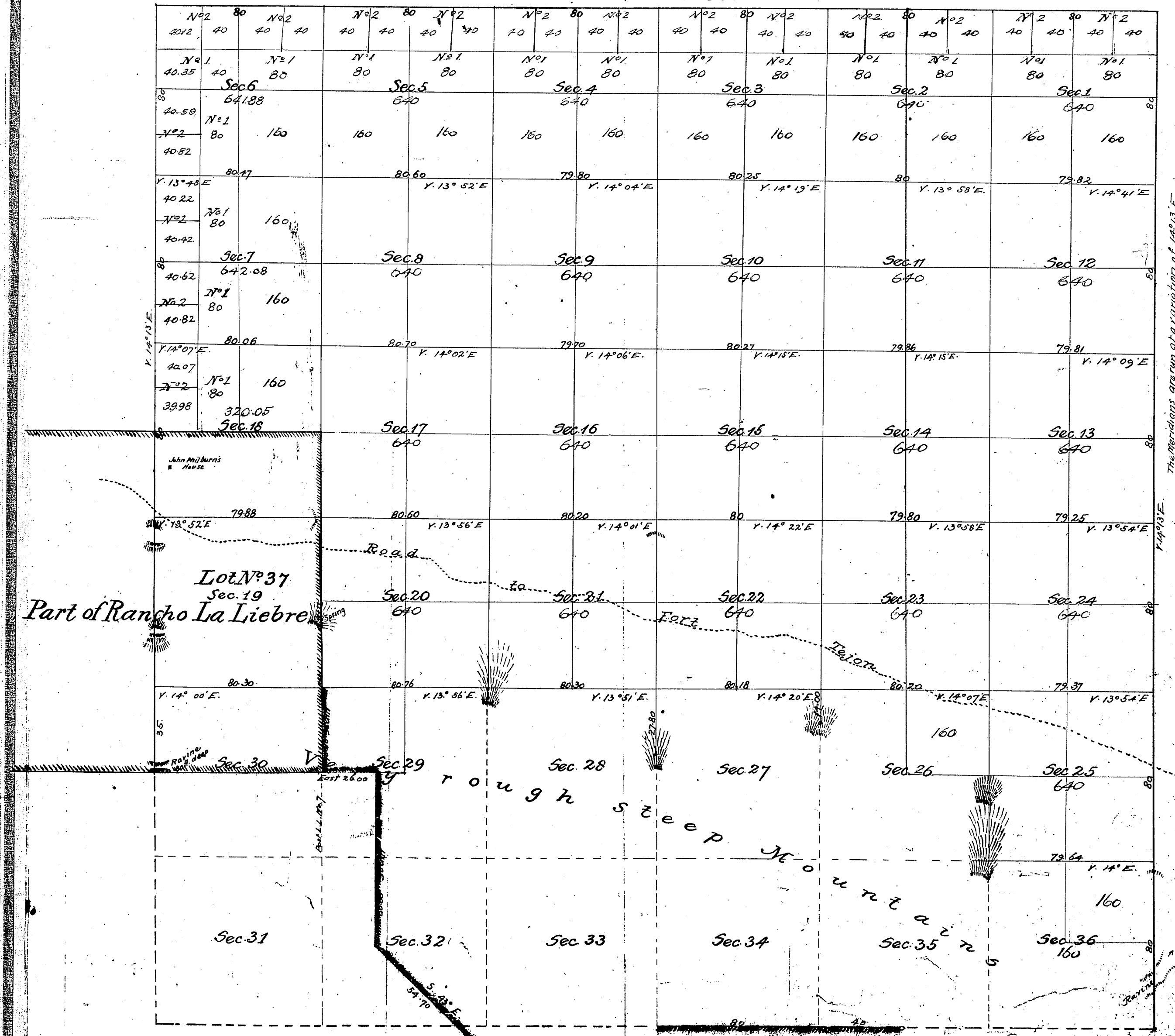
Range N<sup>o</sup> 16 West

San Bernardino Meridian.

T8N  
R16W

(2)

Var. 14° 13' E.



Lot N<sup>o</sup> 37  
Sec. 19  
Part of Rancho La Liebre

rough steep mountain

Surveys Designated	By whom Surveyed	Date of Contract	Amt. of Surveys	When Surveyed
North boundary of Township	Ralph W. Norris	Oct. 12 <sup>th</sup> 1853	6 mts. 00 chs. 00 lks.	1853 (resurveyed) 1855
Rest of township lines	"	Dec. 23 <sup>rd</sup> 1854	10 " 35 " 00 "	1855
Section	"	"	46 " 43 " 62 "	"
Boundaries of Lot N <sup>o</sup> 37	G. H. Thompson	Inst <sup>d</sup> June 18 <sup>th</sup> 1862	"	1862
Lines colored brown	"	Oct 14 1862 & July 1863	"	1862 & 1863

Aggregate area of Public lands surveyed 15,524.01 acres  
 Estimated area of Lot N<sup>o</sup> 37 & unsurveyed mountain land 7,520.39  
 Aggregate 23,044.40

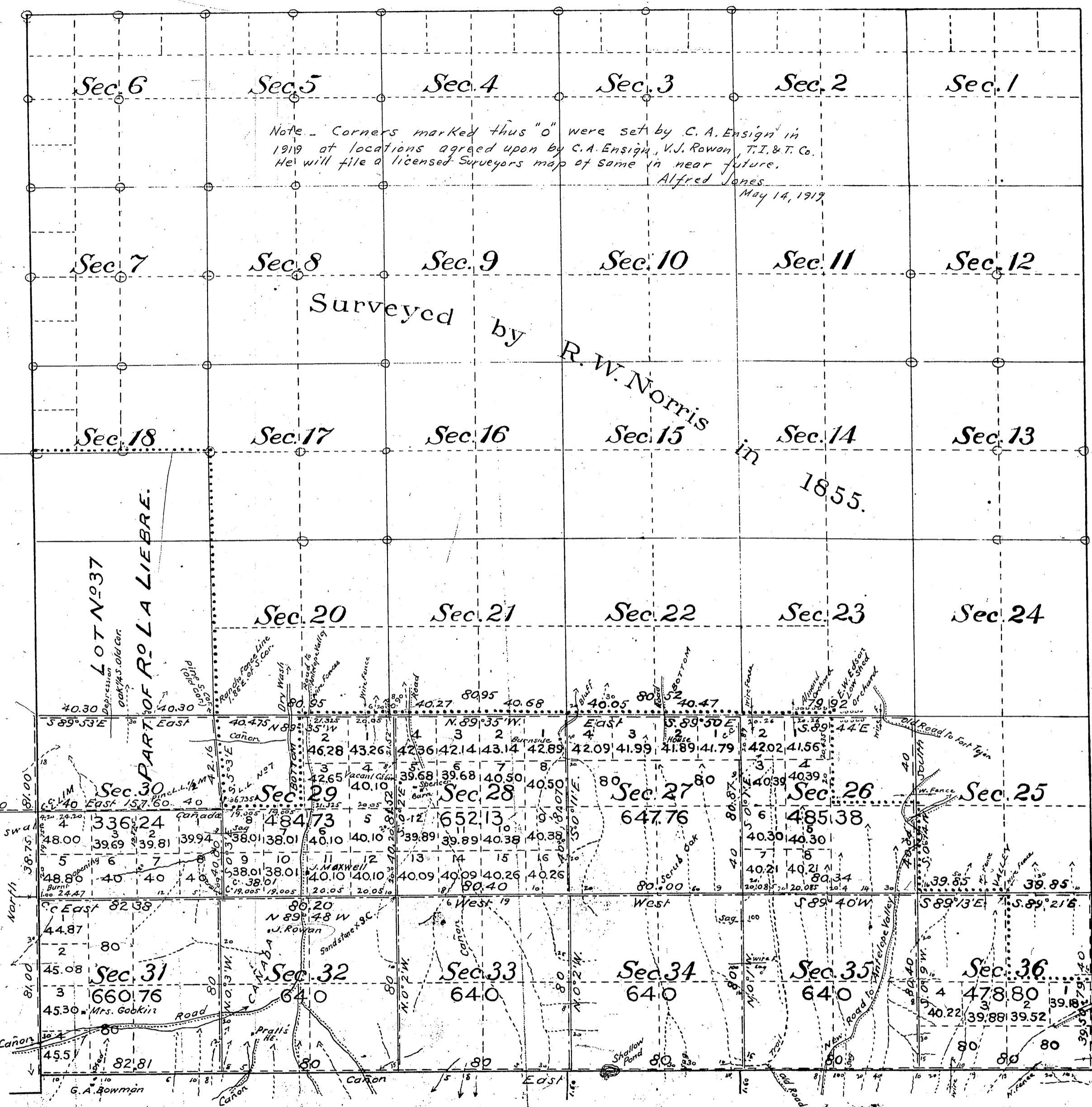
Signed I. R. Hardenbergh  
 C.S. 9118 for Sec. 25  
 C.S. 9114 for 30 July of Sec. 31  
 C.S. 9102 for exterior & interior boundary

The meridians are on a variation of 14° 13' E.  
 C.S. 9153 Lines in Secs. 24 and 25 T8N R16W  
 North & Part of West Bdy C.S. 9126  
 Portion of Rancho La Liebre  
 bdy C.S. 9309 (in Sec. 30)  
 N line Sec. 6 and W line T9 N-R 16 W C.S. 9376  
 Recd. & Filed Aug. 13<sup>th</sup> 1873  
 Alfred James, Registrar.



Township N<sup>o</sup> 8 North, Range N<sup>o</sup> 16 West, San Bernardino Meridian, California.

T 8 N  
R 16 W  
③



C.S. 9114 for S. boundary Sec. 31  
 C.S. 9102 for exterior and interior boundaries  
 C.S. 9109 for S. boundary Sections 34 & 35  
 C.S. 9118 for Sec. 29  
 C.S. 9321 for Sec. 26 to 36.  
 C.S. 9325 for South Bdy. of Twp. & W. line Sec. 30 & 31  
 C.S. 9206 for South Bdy. of Twp.  
 C.S. 9308 for S. bdy. Rancho La Liebre

July 25. 03  
 To be filed Aug 25. 03

Public Land previously surveyed 15,524.01 Acres  
 " " Surveyed by Pearson 6,305.80 "  
 Aggregate Area of Public Land surveyed 21,829.81 Acres  
 Estimated Area of Private Grant, Lot N<sup>o</sup> 37 1,306.19  
 Aggregate 23,136.00

MINERAL LAND: The S<sup>1</sup>/<sub>2</sub> of Sec. 28 and Sec's 33, 34, 35 and 36 surveyed by Pearson, are reported by him to be more valuable for mineral than for agricultural purposes.

The line of demarcation between the areas previously counted in total acreage surveyed and the new surveys, is indicated thus: ---

Filed in U. S. Land office  
 Los Angeles, Cal. Aug 25 1903  
 A. J. Prosser  
 Register

Lat. 34° 45' N }  
 Long 118° 31' W } in S. E. 1/4 Sec. 25.  
 Mean Decl'n 15° 41' E

Surveys Designated	By Whom Surveyed	Contract		Amount of Surveys			When Surveyed
		No.	Date	Mis.	Chs.	Lks.	
Lines previously surveyed, exhibited on Map approved		July 10,	1873.				
Part of West Bdy. of Township	W. H. Norway	Augt. 25,	1884				1884
South Boundary of Township	"						"
South Bdy. of Twp. Re-surveyed	Geo. W. Pearson	173 April 8,	1901	6	02	81	1901
East " of Sec. 35 "	"				79	40	"
Part of West Bdy. of Twp. Re-surveyed	"				2	02	00
Bdy. of R. La Liebre, Re-surveyed	"				2	39	76
Section Lines Re-surveyed	"				7	02	68
" " " New	"				13	47	18
Connecting Lines	"				7	75	Augt. 21, 1901.

The above Map of Township N<sup>o</sup> 8 North, Range N<sup>o</sup> 16 West, San Bernardino Meridian, California, is strictly conformable to the field notes of the surveys thereof, on file in the Office, which have been examined and approved by the U. S. Surveyor-General's Office, San Francisco, California August 29th 1902.

