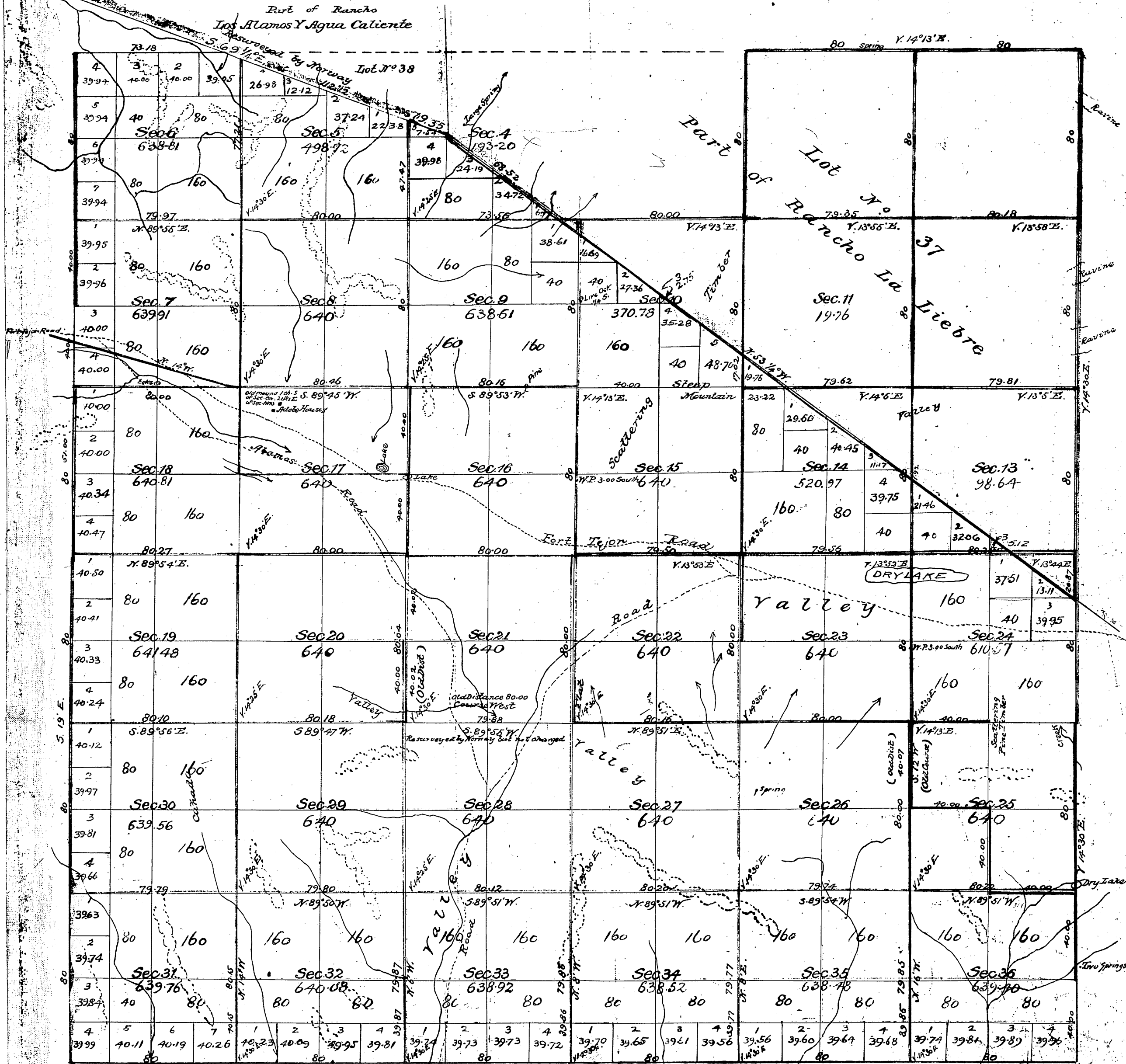


U.S. Field Notes - Secs. 26 & 27 - C.S. 9146
 Por. N. Bdy. and E. line T.9 N.-R.18 W. C.S. 9376

U.S. Field Notes of North & West line
 Secs. 19, 20, 21, 22, & 23 - C.S. 9160
 Bdy. line of the San Gabriel National Forest - C.S. 9389

T.9 N.
 R.18 W.

Township N° 8 North, Range N° 18 West, San Bernardino Meridian.



Field Notes Secs. 28, 36 C.S. 9148

Secs. 14, 15, 16, 21, 20, 29, 30 & 31 subject to R. of way of Antelope Valley
 Water Co. for canal site, under Act of March 3rd 1891, approved Feb. 16th 1895
 Com. Teller 9 of Feb. 27th 95

Public Land surveyed under former Contracts 7,220.72 Acres
 by Norway 11,086.26

Aggregate Area of Public Land 18,506.98 Acres
 Estimated Private Grants 4,755.02
 Aggregate 23,040.00

Subdivision lines surveyed by Morris Variation 14°13'E
 G.G. Morris

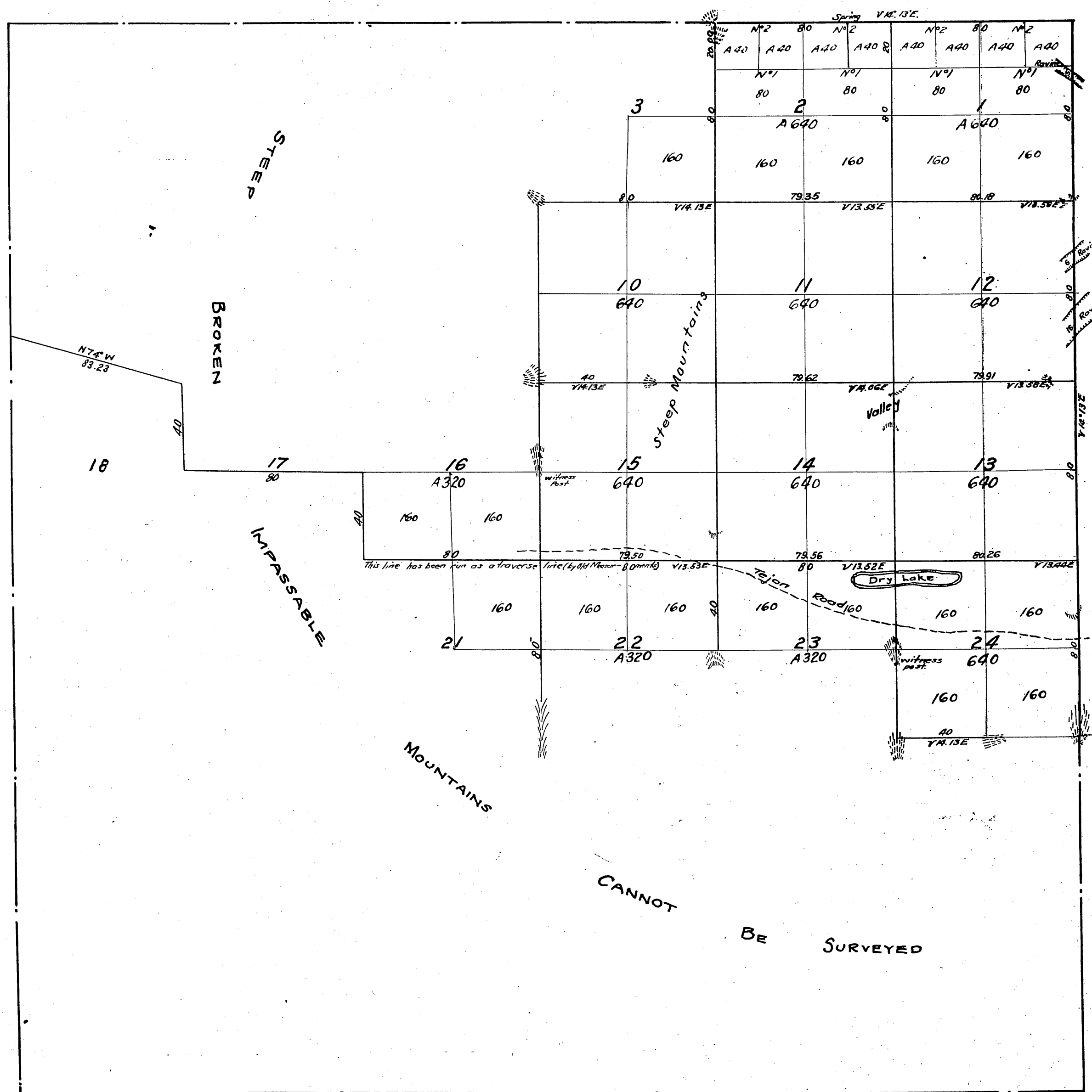
Surveys Designated	By whom Surveyed	Date of Contract	Amount of Surveys When Surveyed	Mag. Declaration
Lines colored blue	R. W. Morris	Oct. 12th 1853	1853	
Township lines colored green		Dec. 23rd 1854	1854	
Section "		Aug. 1st 1855	1855	
Boundaries of Lot No. 37	G. H. Thompson	July 1st 1862	1862	
Lines colored brown		July 1865	1865	
Township lines colored yellow	John Goldsmith	Jan. 18th 1873	1873	
South boundary and part of East boundary	G. S. Collins	Oct. 2nd 1879	1879	
Part of North boundary not colored	M. H. Norway	Oct. 19th 1879	1879	
Boundary of Lot No. 38, re-surveyed			1880	
Section lines colored green (old survey)			1880	
			1880	
			1880	
			1880	
			1880	
			1880	
			1880	
			1880	
			1880	
			1880	
			1880	
			1880	
			1880	
			1880	
			1880	
			1880	
			1880	
			1880	
			1880	
			1880	
			1880	
			1880	
			1880	

Rec'd & Filed July 25th 1881
 Chas. R. Johnson
 Register

Signed:-
 Theo. Wagner
 U.S. Surv. Genl. Cal.

TOWNSHIP 8 NORTH

RANGE 18 WEST OF THE S.B.M.



Aggregate Area of Public lands (Surveyed) 7,040.00 Acres
 Estimated " " Mountains (unsurveyed) 16,000.00 "
Aggregate 23,040.00 "

Meridians run at a }
 Variation of 14° 13' East }

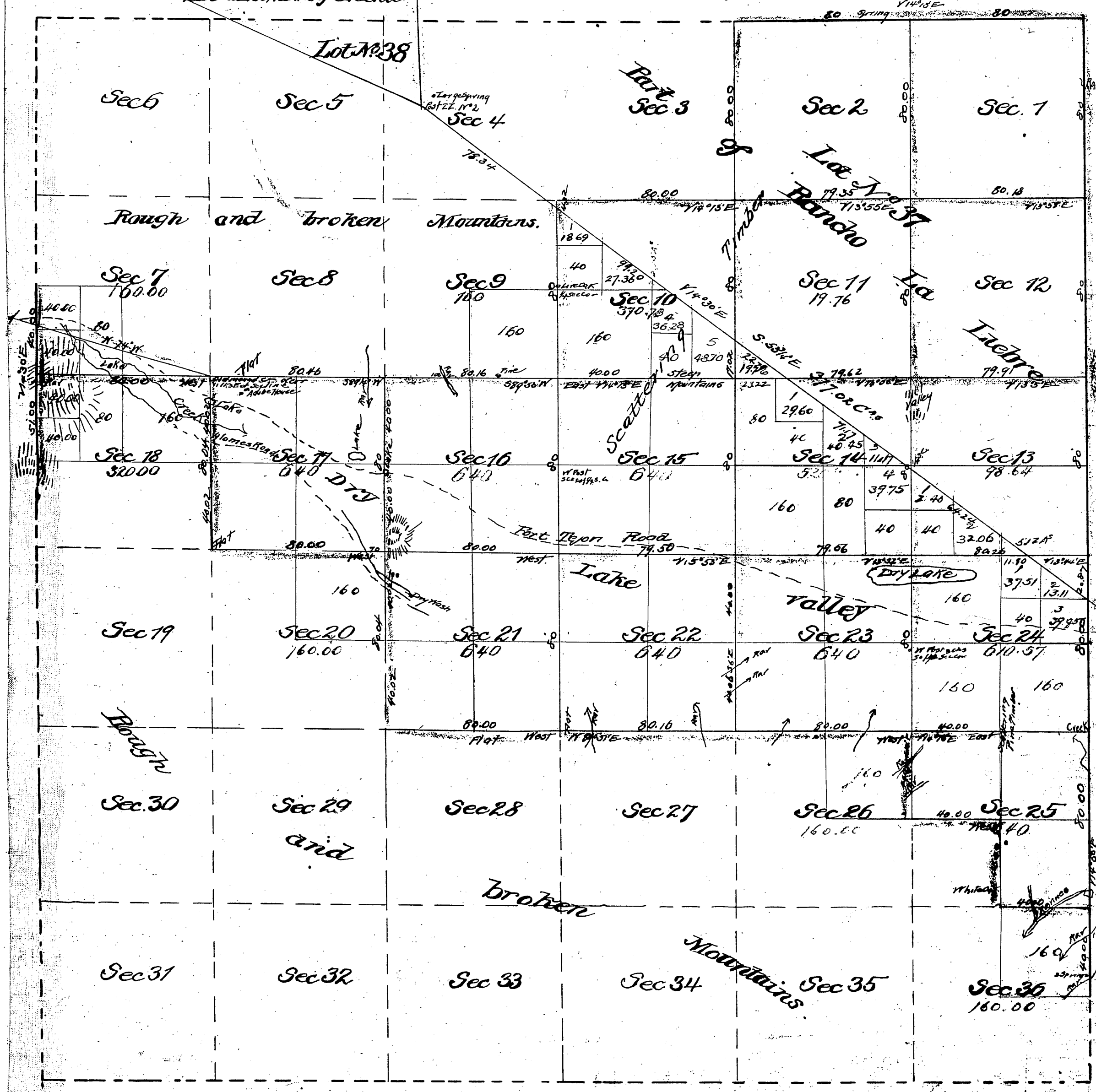
Remark lines colored Blue run on paid for under former contract

Surveys Designated	By Whom Surveyed	Date of Contract	Amount of Surveys		When Surveyed
			Miles	Chs. Fks.	
East Boundary of Trip in part	Ralph W. Norris	October 12 th 1853	3	00 00	1853 (Resurveyed) 1855
East " " " line in part	" " "	Special instructions Aug. 1 st 1853	1	00 00	1855
North " " " "	" " "	" " "	2	00 00	"
Section lines	" " "	" " "	16	39 06	"
" " "	" " "	October 12 th 1855	3	00 00	1853
Travers lines	" " "	" " "	3	00 00	1853 (Resurveyed) 1855
			1	03 23	1853

The above Map of Township N^o 8 North, Range, N^o 18 West of the San Bernardino Meridian is strictly conformable to the field notes of the Surveys there of on file in the Office which have been examined and approved
 Surveyor General
 San Francisco California
 February 19th 1856

John Wilkey
 Survey Gen. Cal.

Township N^o 8 North, Range N^o 18 West, San Bernardino Meridian



Aggregate Area of Public Lands surveyed
Estimated Area of Lands not surveyed 13,820.00
Aggregate 23,040.72

Subdivision lines surveyed by R. M. Morrison at a Nat of 14 1/2 East
14 1/2 14 1/2
John Golds worthy

Govt notes on all interior lines in
Township, see C.S. 9164 - FD 9164
Sec 25 - C.S. 9165 - FD 9165
For N. Boundary and E. line of
T 9 N - R. 18 W. - C.S. 9376
FD 9376

Gov Field notes lines between Secs 13 14 15

Surveys Designated	By whom Surveyed	Date of Contract	Amount of Surveys	When surveyed
Lines colored blue	Ralph W. Morris	October 12 th 1853		1853
Township lines colored green	"	December 23 rd 1854		1854
Section lines colored yellow	"	August 1 st 1855		1855
Boundaries of Lot N ^o 37	G. H. Thompson	First June 15 th 1862		1862
38	"	July 1865		1865
Parts of Township lines colored brown	John Golds worthy	January 13 th 1873	2,112 7/16 37 1/2	1873
Subdivision lines colored	"	"	13 1/2 35	1873
French boundary	"	"	4 5/8 82	March 19 1873

Gov Field notes lines between Secs 13 14 15
13 14 15
23 24 25
26 27 28
south line 13
east line 13
24
N. E. of Twp see C.S. 9164
For Twp see C.S. 9165
For Secs 26 and 27 see C.S. 9166
Gov Field notes see 26 27 28 C.S. 9166

C.S. 9027