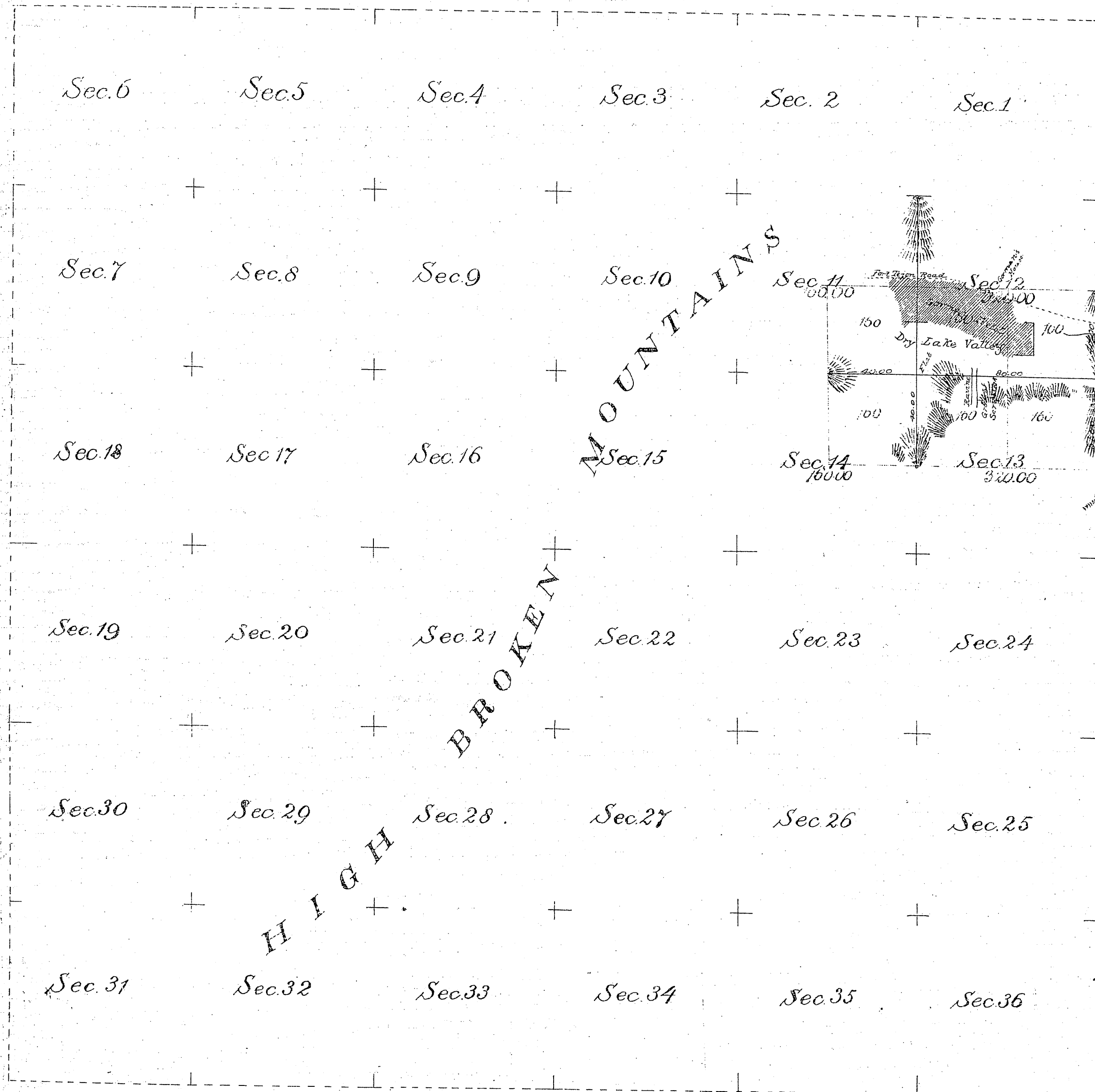


T8N
R19W
①

Township N°8 North

Range N°19 West

San Bernardino Meridian



Surveys Designated	By whom Surveyed	Date of Contract	Amount of Surveys	When Surveyed
Township Line	John Goldsmith	January 13th 1873	3 miles 00.00	1873
Section Lines	"	August 9th 1873	3 miles 00.00	Sept. 23rd 1873

Termination used by Goldsmith by 14th Dec. 1873.

Aggregate Area of Public Land 960.00 Acres
 Estimated " " unsurveyed Mountain Land 22080.00 "
 Aggregate 23040.00 "

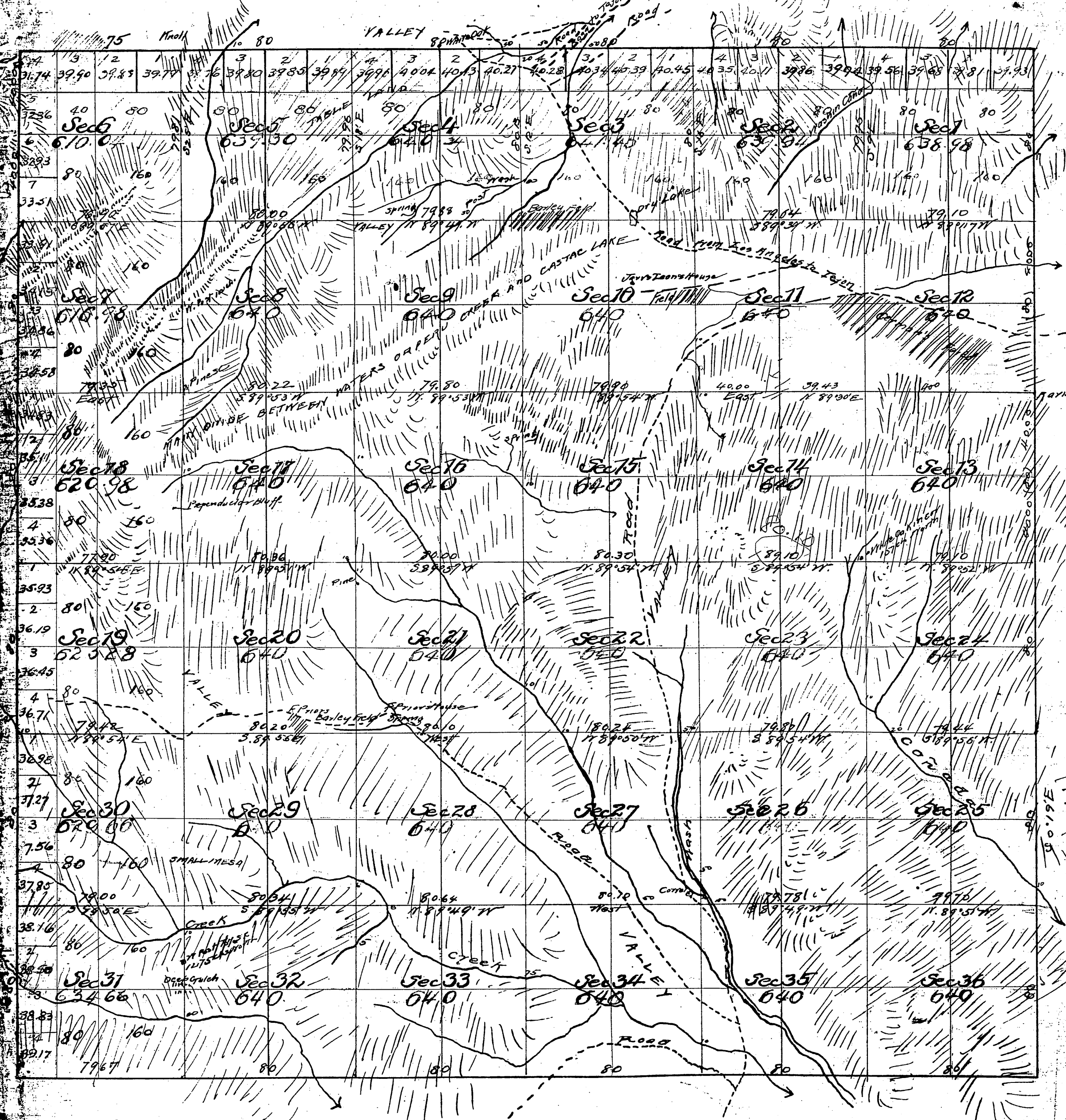
Signed:
 I. R. Hardenbergh
 U.S. Survey Gen'l. Cont.

1873

Part of N. 1/2 of TWP. sec. C. S. 9107 C. Line, sec. 11
 Part of E. 1/2 of " " " " C. S. 9148 (map attached)

Township N° 8 North, Range N° 19 West, San Bernardino Meridian.

T8N
R19W
②



Public Land surveyed by John Goldsworthy 960.00 Acres
R. 197762
Geo. S. Collins
RR 97762

Surveys Designated	By Whom Surveyed	Date of Contract	Amount of Surveys	When Surveyed	Mag. Decl.
Part of E. bdy. of Tp colored blue	John Goldsworthy	January 13 th 1873		1873	
Section lines colored blue	"	August 9 th 1873		1873	
South & West b. dics of Township	W. H. Norway	October 10 th 1879		1880	
Part of E. bdy. of Tp colored green	Geo. S. Collins	October 21 st 1879	00 m. 40. 45. 00. 16.	1880	14° 25' E
Part of E. bdy. of Township	"	"	10. 75. 75.	1880	
Section lines colored red	"	"	8. 00. 18.	September 24 th 1880	
Section lines colored green	"	"	1. 40. 00.		
Section lines not colored	"	"	48. 68. 00.		

Per E. bdy. Tract C.S. 9248
C.S. 9208-N. & E. Bdy and part of interior Sec. lines
South line Sec. 36- C.S. 9373