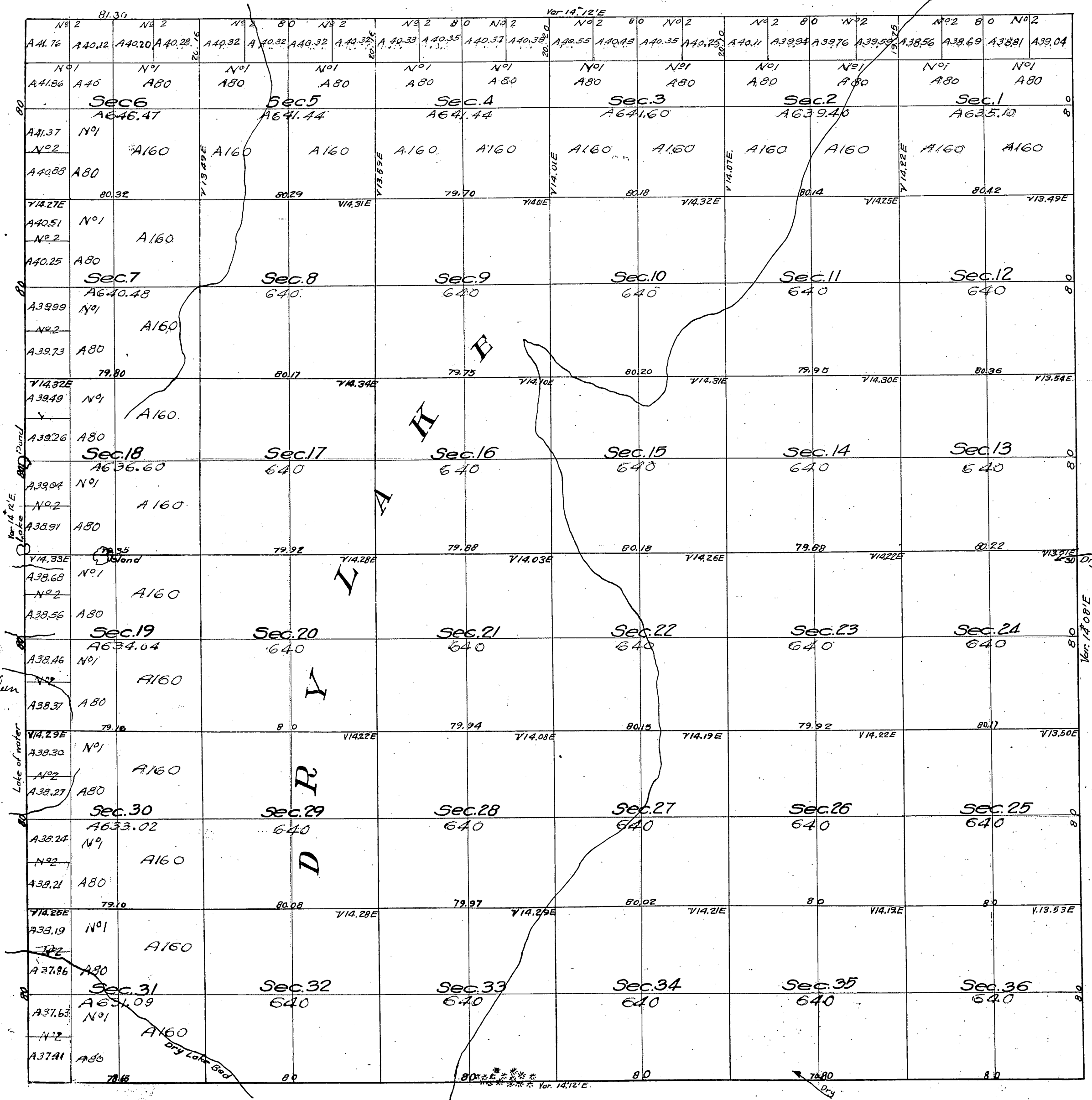


Township No. 9 North Range No. 9 West San Bernardino Meridian



Aggregate Area of Public Lands 23,020.52 Acres

Meridians not otherwise noted, ran at a Var of 14° 10' E

The above Map of Township No. 9 North, Range No. 9 West (San Bernardino Meridian) is strictly conformable to field notes of the surveys thereof on file in the Office which have been examined and approved
 Surveyor General's Office
 San Francisco California
 September 19th 1856

J. W. Mansueto

U. S. Surveyor General's Office.
 I certify this to be a true, full and correct copy of the original on file in this office.
 Given under my hand and seal of Office at the City of San Francisco Cal this 10th day of August 1856

Survey Designated	By whom Surveyed	Date of Contract	Amount of Surveys	When Surveyed
Township lines	R. W. Norris	December 23rd 1854	Mls. Chs. lks. 23 79 95	1855
Section "	" " "	October 19th 1856	59 79 59	1856

For S. bdy. see C. S. 9151