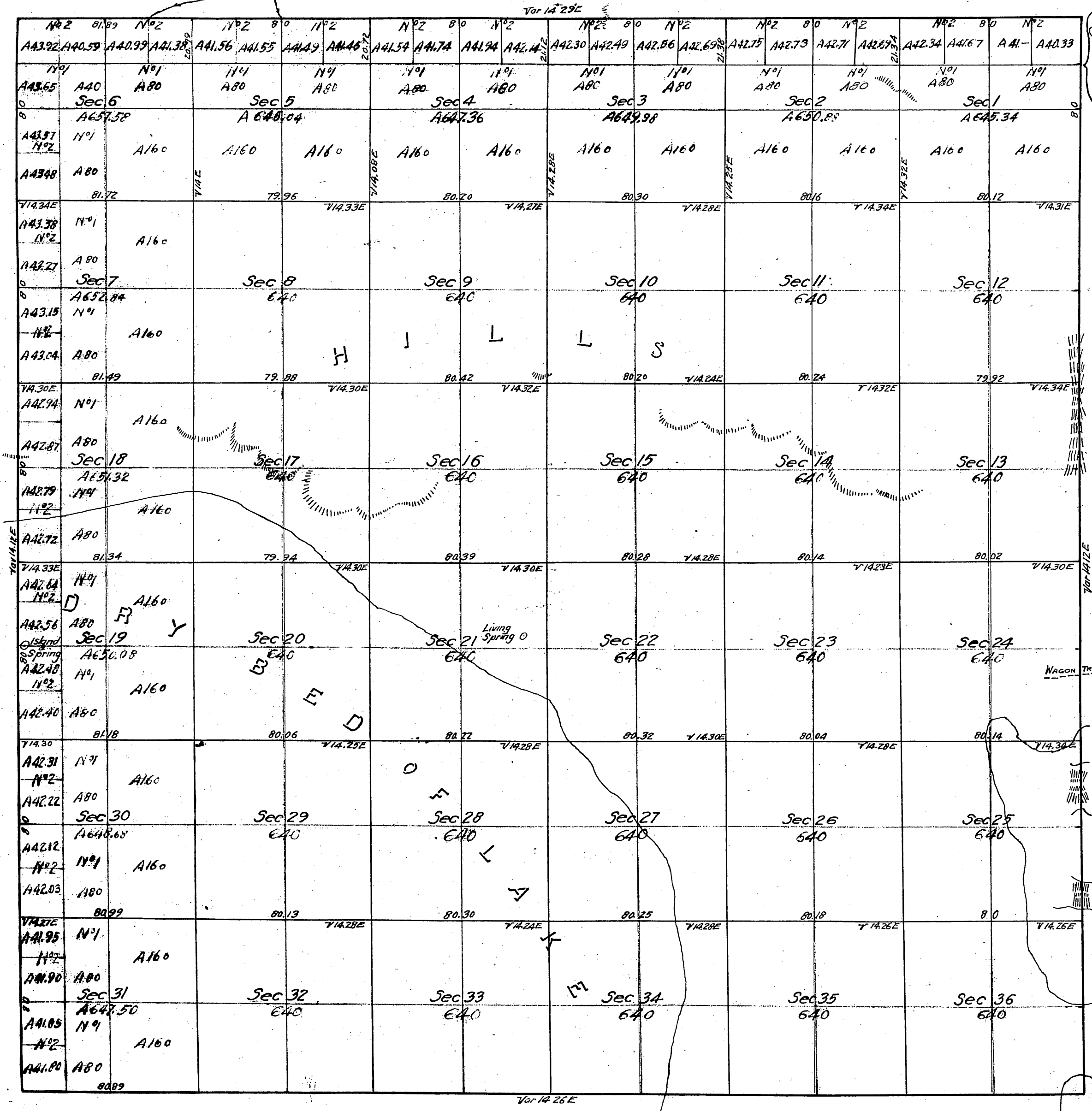


T9N  
R11W  
①

For Govt. notes of this line and secs. in next townships north see C.S. 9154

TOWNSHIP N<sup>o</sup> 9 NORTH RANGE N<sup>o</sup> 11 WEST SAN BERNARDINO MERIDIAN



Secs. 1 to 15 incl, 17<sup>th</sup> Sec 16, 17<sup>th</sup> Sec 17, 17<sup>th</sup> Sec 18, DESIGNATED UNDER HD ACT EFFECT-CAL. 14 IVE JAN. 10, 1916 - C-OF NOV 24, 1915 DESIG. 500

Surveys Designated	By Whom Surveyed	Date of Contract	Amount of Surveys Mls. Chs. Lks.	When Surveyed
East boundary of Township	R. W. Norris	December 23, 1854	6 00 00	1855
Rest of Township Lines	" "	October 19, 1855	18 02 78	1856
Section	" "	" "	60 15 91	"

The above Map of Township N<sup>o</sup> 9 North, Range N<sup>o</sup> 11 West (San Bernardino Meridian) is strictly conformable to the field notes of the surveys thereof on file in this office which have been examined and approved  
 Surveyor General's Office E. Ady. Secs. 25 & 36 - C.S. 9136  
 San Francisco California " " " " - C.S. 9152  
 September 19<sup>th</sup> 1856 " " " 36 - C.S. 9154

I certify this to be a true full and correct copy of the original on file in this Office  
 U.S. Surveyor General's Office  
 Given under my hand and seal of Office  
 at the City of San Francisco Cal.

*J. W. Mandeville*