

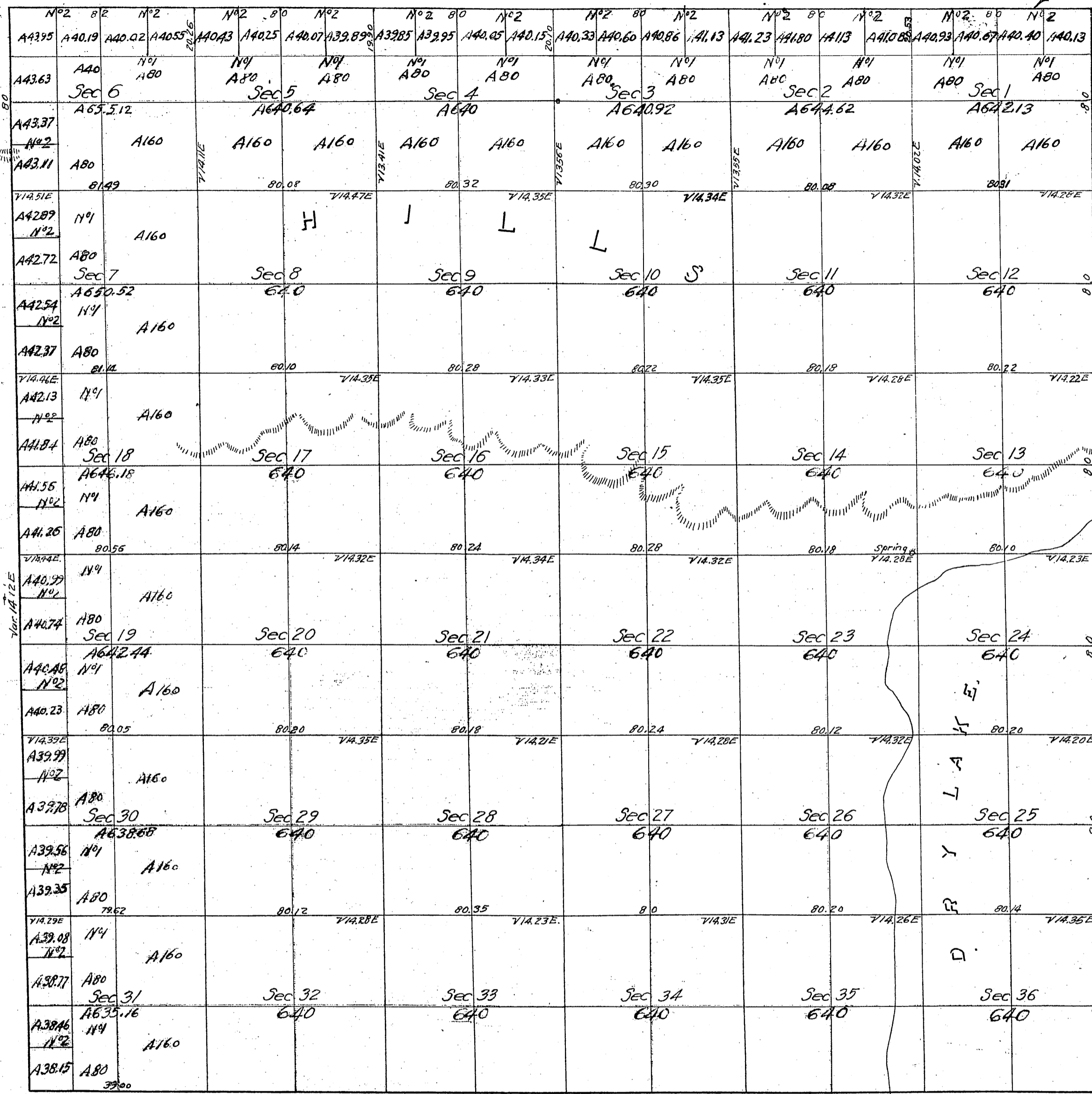
TOWNSHIP N^o 9 NORTH

RANGE N^o 12 WEST

SAN BERNARDINO MERIDIAN

For Govt notes of tier of
secs. in next township north
see C.S. 9154

① T9N
R12W



Secs. 1 to 6, incl, 9 to 12 incl, N^o Sec 13, N^o Sec 14,
N^o Sec 15,
DESIGNATED UNDER ENLARGED HD ACT EFFECT-
IVE JAN. 10, 1916 - C-OF NOV, 1915 DESIG, 500 CAL. 14

Island and Spring

Aggregate Area of Public Lands 23,079.01 Acres

Meridians not otherwise noted, ran at a Var. of 14.14E

Rest?

Surveys Designated	By whom Surveyed	Date of Contract	Amount of Surveys			When Surveyed
			Mls.	Chs.	Trs.	
West boundary of Township	R.W. Norris	December 23 rd 1854	5	00	00	1855
West " " lines	" "	October 19 th 1855	18	01	00	1856
Section " "	" "	" "	60	09	06	"

The above Map of Township N^o 9 North, Range N^o 12 West (San Bernardino Meridian) is strictly conformable to the field notes of the survey thereof on file in this Office which have been examined and approved
Surveyor General's Office
San Francisco California
September 19th 1856

W. S. Surveyor General's Office
I certify this to be a true, full, and correct copy of the original on file in this Office
Given under my hand and Seal of Office at the City of San Francisco Cal. this 10th day of August 1858

J. M. Morrison