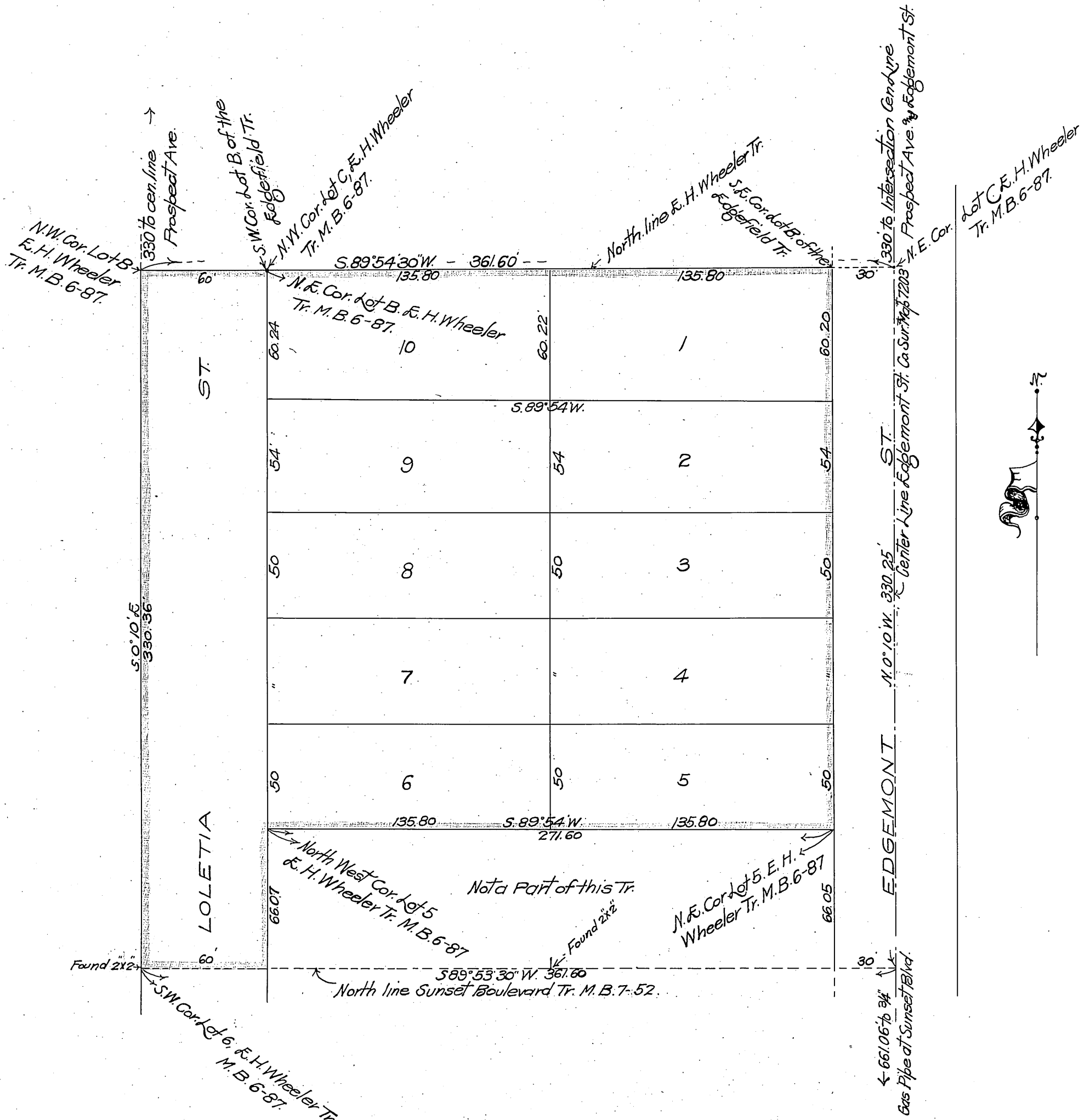


Map of the
HOVEY & SCHERMERHORN TRACT
 Being a resubdivision of Lots 1, 2, 3, 4, B, &
 and a portion of Lot C of the E. H. Wheeler Tract
 Recorded in Book 6 Page 87 of Maps, Los Angeles Co, California
 Geo. W. Tuttle, Surveyor, Surveyed Nov. 1907
 Scale 1 inch = 50 feet
 In the City of Los Angeles



Proprietor: C. P. Schermerhorn

Recorded Jan. 21, 1908.

Loletia St changed Holmby Ave D:13-A. Ord 22420
Holmby Ave " to Kenmore Ave " 25092

~~A 78 Sht 6~~ 40-C-6 Sht. 40-A-212

Camp