

Thank you for joining.

The meeting will begin soon.

Monteith Park and View Park Green Alley
Stormwater Improvements Project

9/23/2020 6–7PM



Monteith Park and View Park Green Alley Stormwater Improvements Project

Community Information Session

9/23/2020 6–7PM



Monteith Park and View Park Green Alley Stormwater Improvements Project

Community Information Session
9/23/2020 6-7PM

Click icons to open windows



Participants



Chat



End

Participants

Search

Panelist: 5



Kara Plourde
Host, me



Catherine Ricci



Hosea Ma...



Michelle Reed



Paul Choy



Chat

Raised Hand Feature

from Xavier Gutierrez to all participants:

1:58 PM

Test Question: Did this work?

Select to chat with Host or Everyone

To: Host

Enter chat message here

MONTEITH PARK AND VIEW PARK GREEN ALLEY STORMWATER IMPROVEMENTS PROJECT

Overview

- Project Goals
- Project Scope
- Project Benefits
- Project Budget & Schedule
- Project Information Resources
- Q&A



MONTEITH PARK AND VIEW PARK GREEN ALLEY STORMWATER IMPROVEMENTS PROJECT

Water from rain, melting snow, and other sources washes pollutants into storm drains, which deposit the pollutants into water bodies such as the ocean and lakes.

Pollutants include:

Protecting our Waterways



METALS from roads, such as copper from brake pads



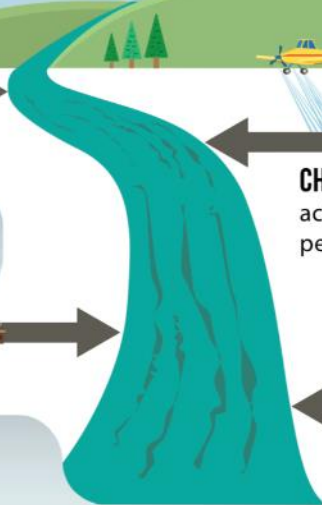
CHEMICALS from human activities, such as using pesticides in gardens



TRASH from city streets

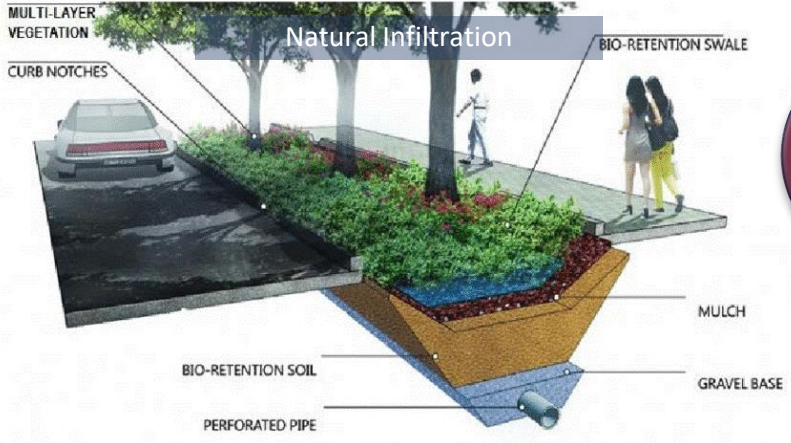
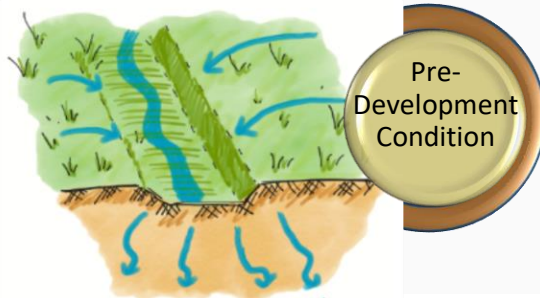


BACTERIA from human and nonhuman waste



MONTEITH PARK AND VIEW PARK GREEN ALLEY STORMWATER IMPROVEMENTS PROJECT

Strategies – Capturing Stormwater



MONTEITH PARK AND VIEW PARK GREEN ALLEY STORMWATER IMPROVEMENTS PROJECT

Infiltration Wells:



MONTEITH PARK AND VIEW PARK GREEN ALLEY STORMWATER IMPROVEMENTS PROJECT

Monteith Park Information

- Location: Unincorporated County Area of View Park
- Ownership: Owned and Operated by County of LA Department of Parks and Recreations
- Park Area: \approx 26,000 SF



MONTEITH PARK AND VIEW PARK GREEN ALLEY STORMWATER IMPROVEMENTS PROJECT

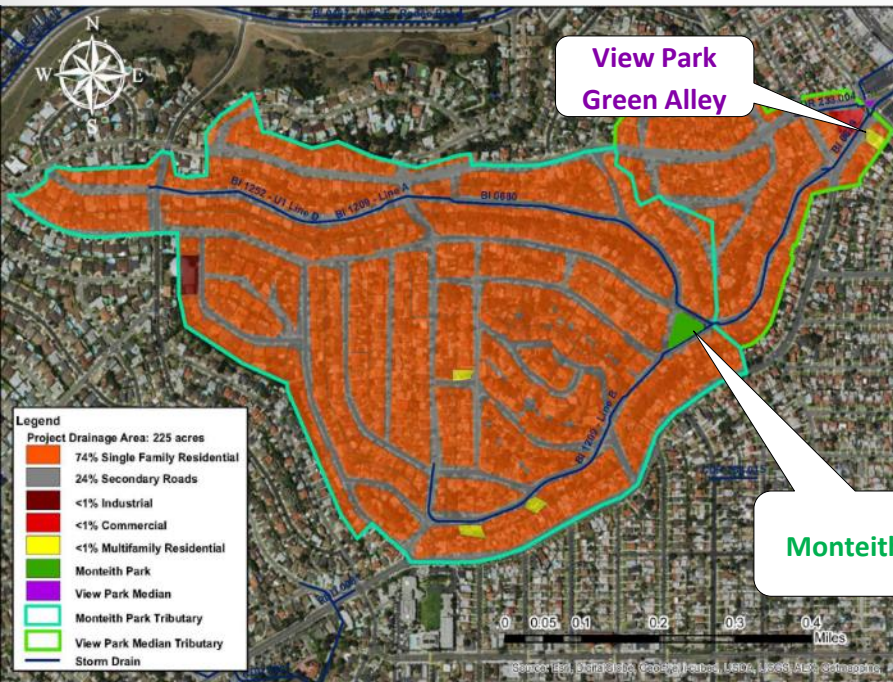
Alley Information

- Location: Unincorporated County Area of View Park
- Maintained by: LA County Public Works
- Area: \approx 400 SF



MONTEITH PARK AND VIEW PARK GREEN ALLEY STORMWATER IMPROVEMENTS PROJECT

Hydrology



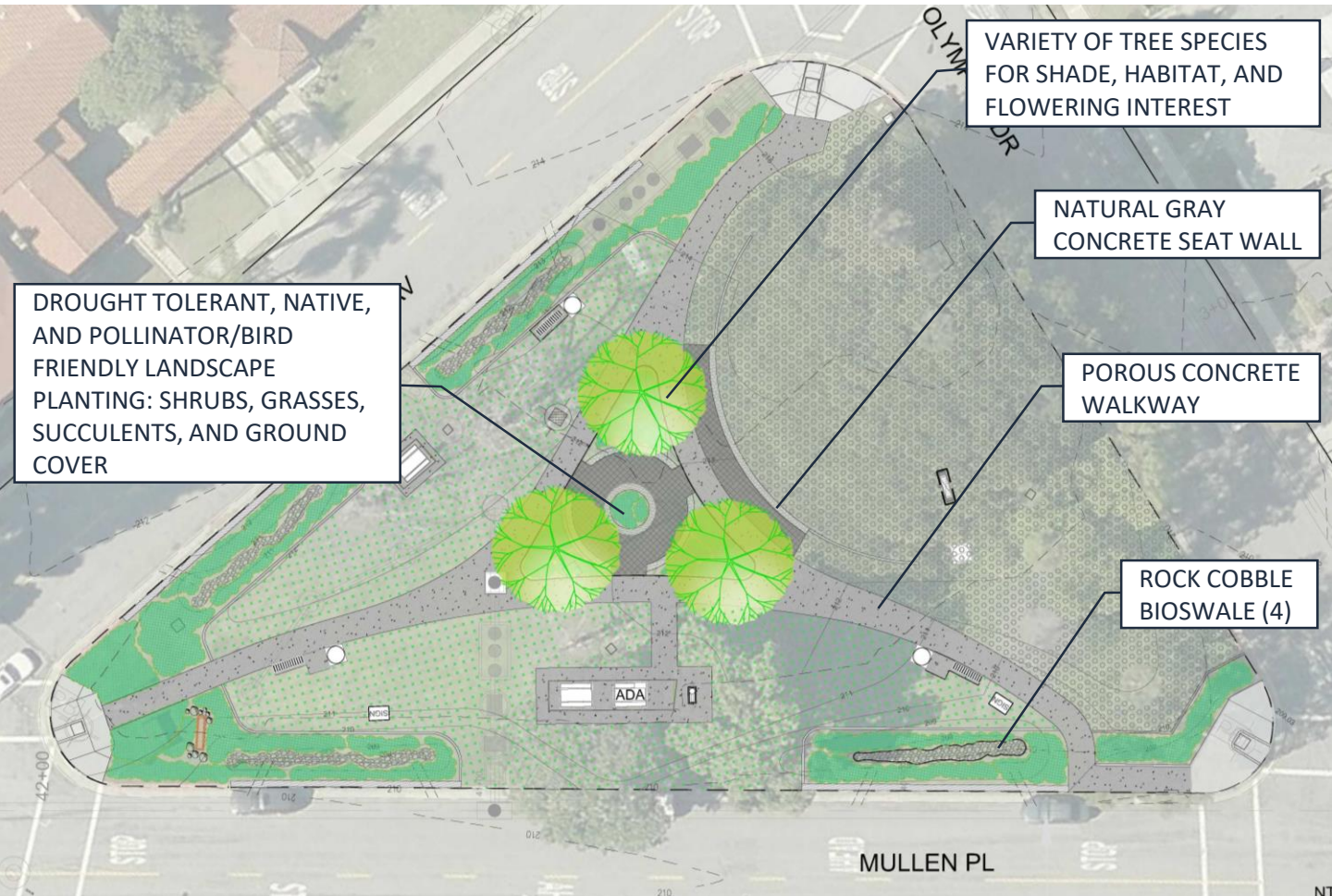
- Monteith Park:
 - 188 acre drainage area
- View Park Green Alley:
 - 40 acre drainage area
- Total:
 - 228 acres

Site Overview

- 2 Pre-Treatment Systems
- 13 Dry Wells



Above Ground Concept



DROUGHT TOLERANT, NATIVE, AND POLLINATOR/BIRD FRIENDLY LANDSCAPE PLANTING: SHRUBS, GRASSES, SUCCULENTS, AND GROUND COVER

VARIETY OF TREE SPECIES FOR SHADE, HABITAT, AND FLOWERING INTEREST

NATURAL GRAY CONCRETE SEAT WALL

POROUS CONCRETE WALKWAY

ROCK COBBLE BIOSWALE (4)

ADA

MULLEN PL

OLYMPIA DR

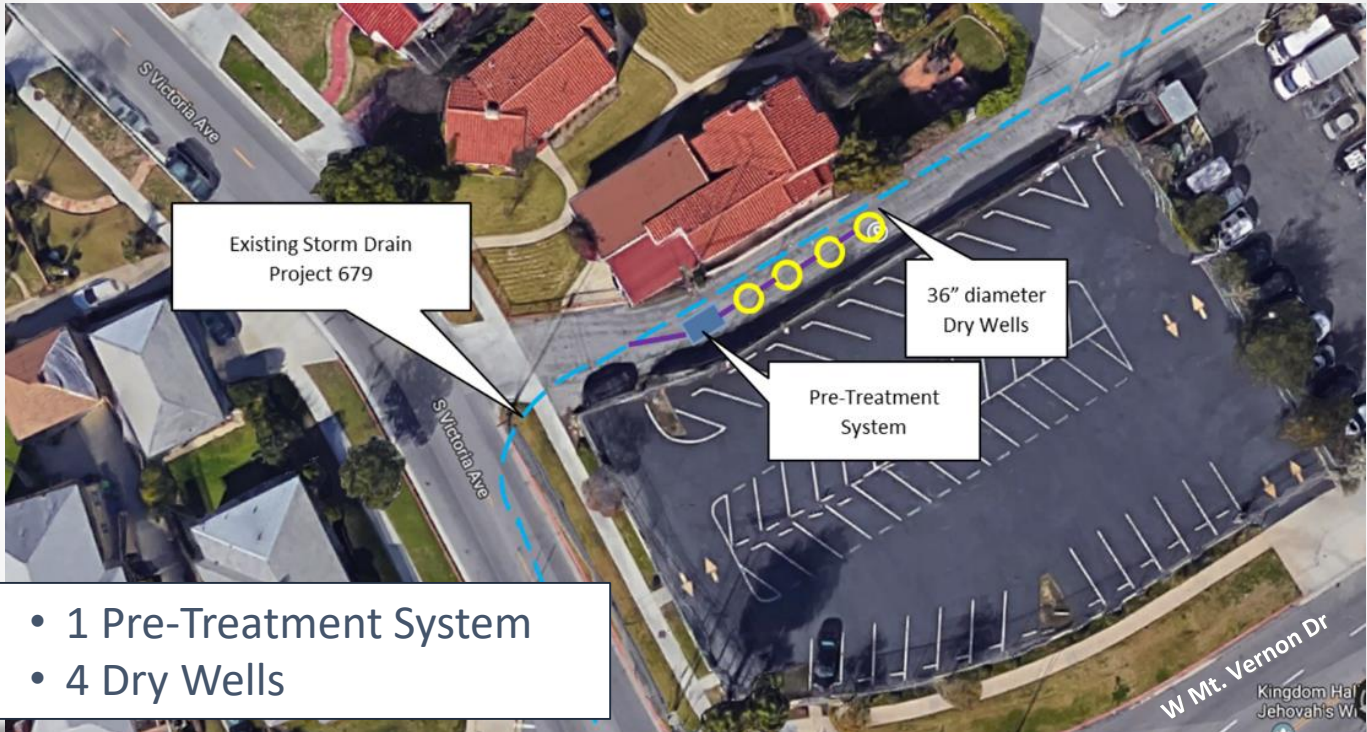
42+00

210

NT

MONTEITH PARK AND VIEW PARK GREEN ALLEY STORMWATER IMPROVEMENTS PROJECT

Site Overview



- 1 Pre-Treatment System
- 4 Dry Wells

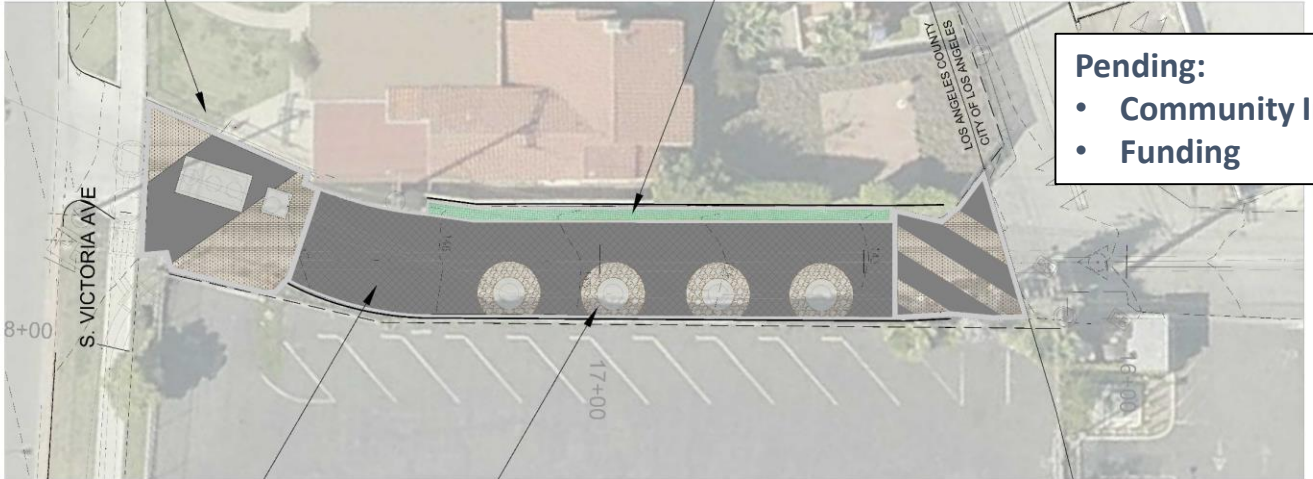
Preliminary Concept



ACCENT ENTRY PAVING
W/ COLOR CONCRETE
AND PERMEABLE PAVERS



LOW IMPACT
DEVELOPMENT
DROUGHT TOLERANT
PLANT MATERIAL AND
BIOSWALES WITH VINES



Pending:

- Community Input
- Funding



THEMED PAVING PATTERN
W/ COLOR GROUTED
RIVER ROCK AT DRY WELL
LOCATIONS



COLORED CONCRETE

NORTH



MONTEITH PARK AND VIEW PARK GREEN ALLEY STORMWATER IMPROVEMENTS PROJECT

Project Benefits

- Water Quality
- Community Enhancements
- Environment



MONTEITH PARK AND VIEW PARK GREEN ALLEY STORMWATER IMPROVEMENTS PROJECT



Cost

- Estimated Project Cost: \$9.3M
- Funding Sources:
 - Prop 12 SMBRC

Schedule (Tentative)

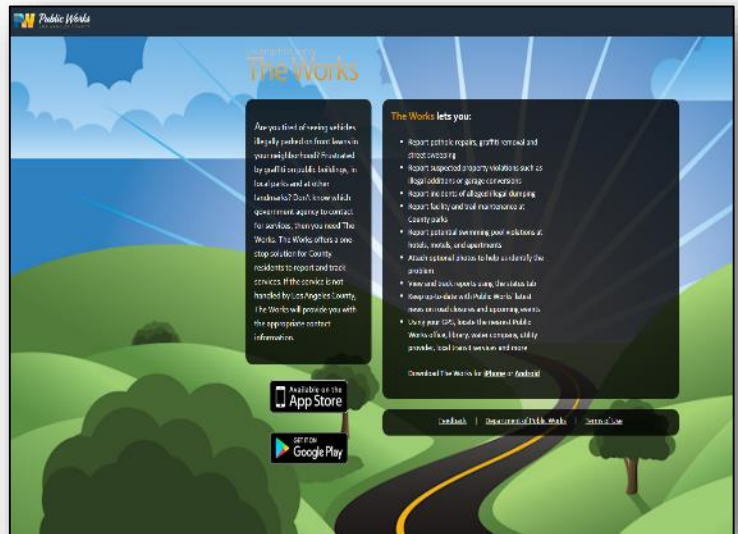
- Begin Construction - Mid 2021
- Complete Construction - Early 2022

Reporting Issues

The Works App

CONTACT INFORMATION

- The Works App
- Public Works Website: pw.lacounty.gov
- By phone: (626) 458-5100



Los Angeles County Public Works Services



WATER RESOURCES

"We provide sustainable water supplies and healthy watersheds while reducing flood risk for our communities."



TRANSPORTATION

"We provide safe, clean, efficient transportation choices and rights-of-way to enhance mobility and quality of life."



ENVIRONMENTAL SERVICES

"We lead, inspire, and support our communities toward a healthy, waste-free future."



PUBLIC BUILDINGS

"We design and deliver high performing public facilities for people and services to thrive."



DEVELOPMENT SERVICES

"We help people build dreams and ensure safe and healthy homes and communities."



EMERGENCY MANAGEMENT

"We maintain a highly trained and equipped workforce to respond to and recover from daily incidents, local emergencies, and major disasters."

Q&A

File Edit Share View Audio Participant Meeting Help

Participants

Panelist: 5

- KP Kara Plourde
Host, me
- CR Catherine Ricci
- HM Hosea Ma...
- MR Michelle Reed
- PC Paul Choy

Chat **Raised Hand Feature**

from Xavier Gutierrez to all participants: 1:58 PM
Test Question: Did this work?

Select to chat with Host or Everyone

To: Host

Enter chat message here

Click icons to open windows

Participants Chat End

Etiquette

- State your name
- Keep questions brief and on topic
- Flexible and patient

MONTEITH PARK AND VIEW PARK GREEN ALLEY STORMWATER IMPROVEMENTS PROJECT



FOR REGULAR PROJECT UPDATES & CONTACT INFORMATION:

<http://dpw.lacounty.gov/go/Monteith>

Web Search Keyword Phrase: *Monteith Park Stormwater Project*



Paul Choy

Associate Civil Engineer

pchoy@pw.lacounty.gov

(626) 300-2304

Michael De Leon, PE

Capital Projects Manager

mdeleon@pw.lacounty.gov

(626) 300-3290

Reporting Issues

The Works App

CONTACT INFORMATION

- The Works App
- Public Works Website: pw.lacounty.gov
- By phone: (626) 458-5100

