

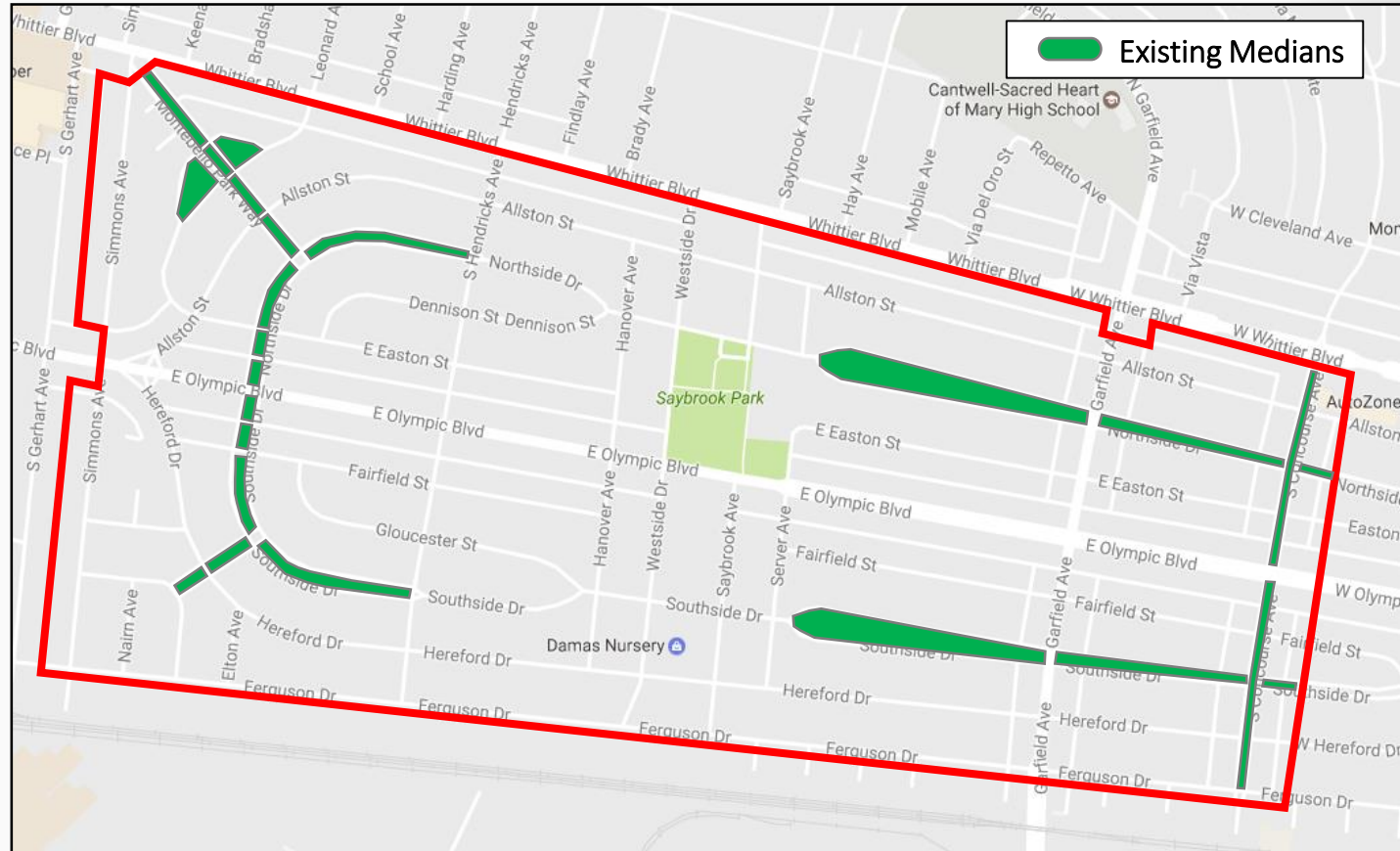


East Los Angeles Sustainable Median Stormwater Capture Project

Supervisory District 1

General Project Information

- Over 30 medians
- Different sizes



General Project Information



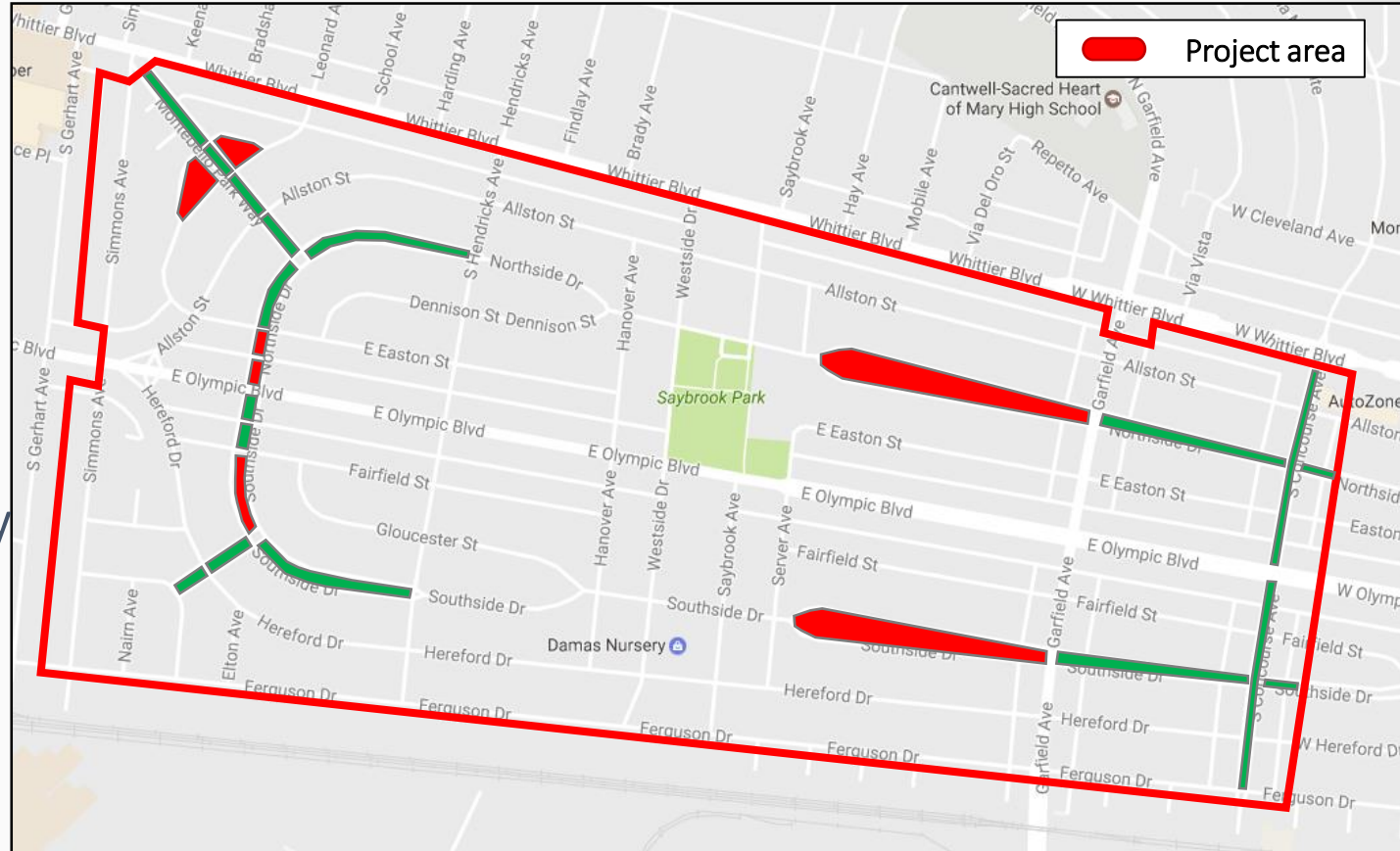
Existing condition of typical medians

General Project Information



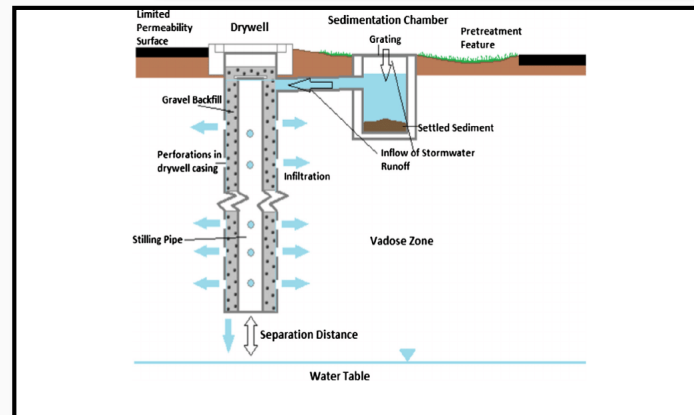
Project Opportunities

- Improve water quality
- Improve environment
- Provide community benefits

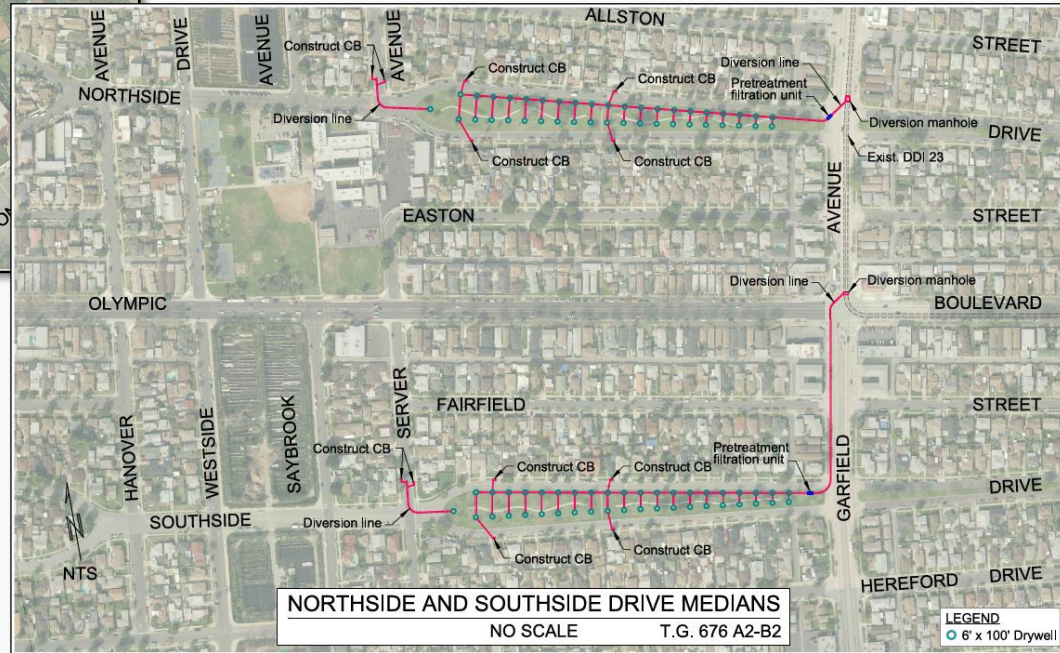
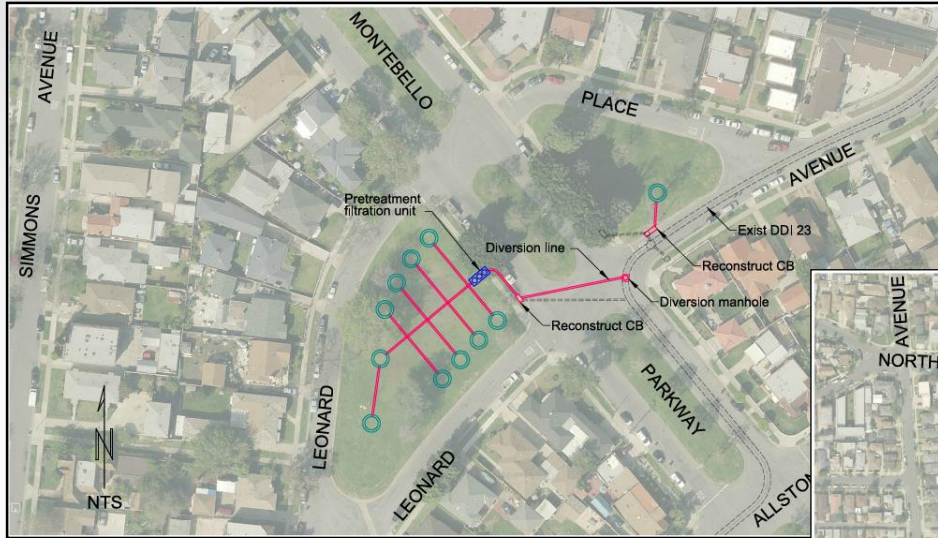


Infiltration Wells

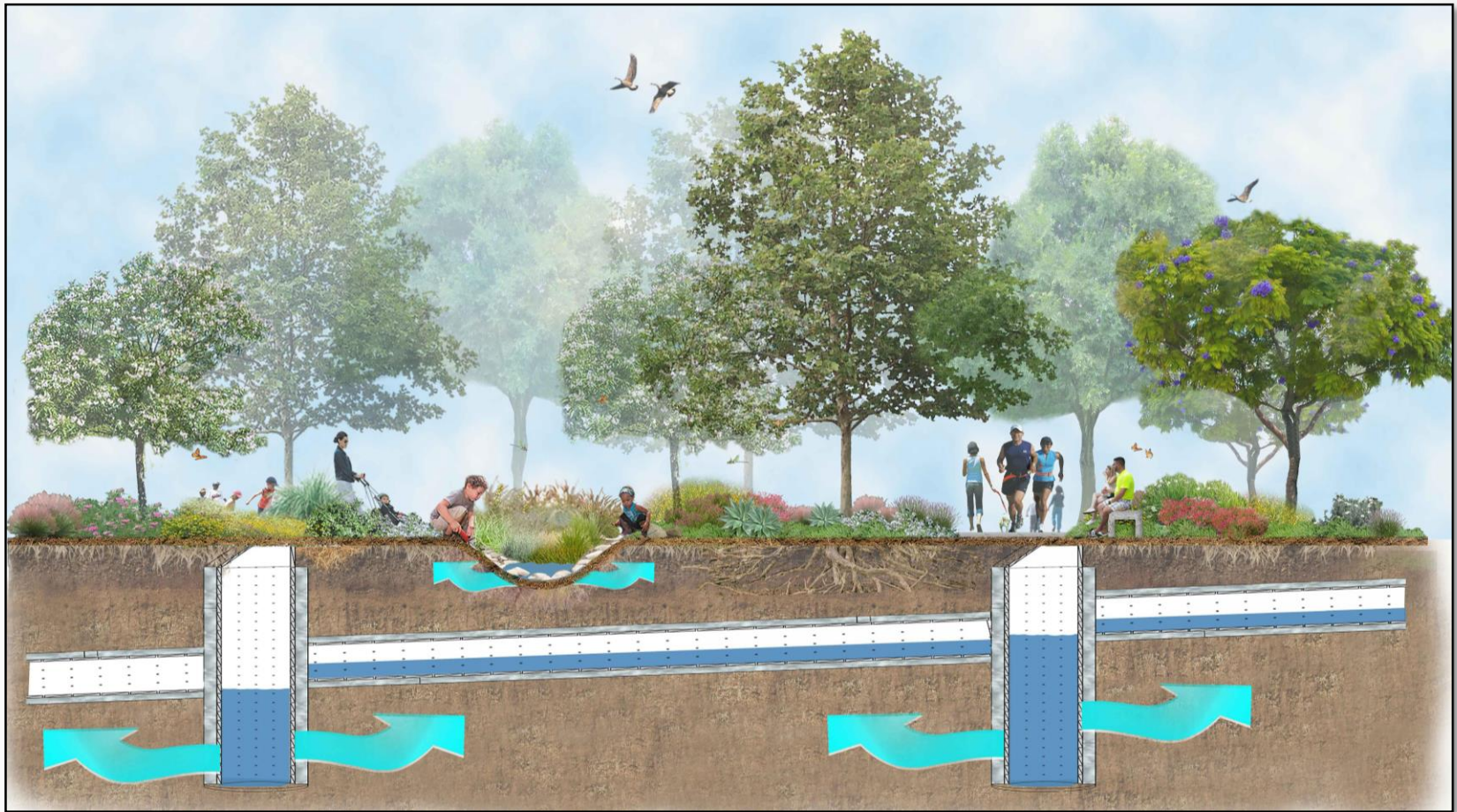
- Capture stormwater
- Treat stormwater
- Soak into the ground



Project Concept Overview



Stormwater Benefits



Community Benefits



PERSPECTIVE RENDERING



PLAN VIEW NTS



SECTION RENDERING



EXISTING CONDITION



PERSPECTIVE RENDERING



PLAN VIEW NTS



SECTION RENDERING



EXISTING CONDITION

Environmental Benefits



Western Tiger Swallowtail
Papilio rutulus



Monarch Butterfly
Mariposa Monarca



American Goldfinch
Jilguero Americano



Yellow-rumped Warbler
Warbler Amarillo-Rumpido



Great Horned Owl
Gran Búho Cornado



Western Redbud
Redbud Occidental



California Sycamore
Sicomoro de California



Autumn Sage
Sabio de Otoño



California Grey Rush
Juncus patens



Prostrate Coyote Brush
Cepillo de Coyote Postrado

Project Cost Estimate

Total Project Cost Estimate

- \$23.5 Million

Grants

- Prop 1 Stormwater: \$2 Million
- CA Urban Greening: \$2.5 Million

Potential Partnerships

- City of Monterey Park
- City of Montebello

Project Schedule

Advertise and Award: Spring 2019

Start Construction: Fall 2019

Project Completion: Fall 2020

Project Contact Information

Joseph Venzon (SWQD)

jvenzon@dpw.lacounty.gov

(626) 300-2630

Regina Quan (PMD II – Project Manager)

rquan@dpw.lacounty.gov

(626) 300-3255

Project Website: <https://dpw.lacounty.gov/wmd/stwq/EastLA.aspx>