

BIG TUJUNGA RESERVOIR SEDIMENT REMOVAL PROJECT

LOS ANGELES COUNTY FLOOD CONTROL DISTRICT

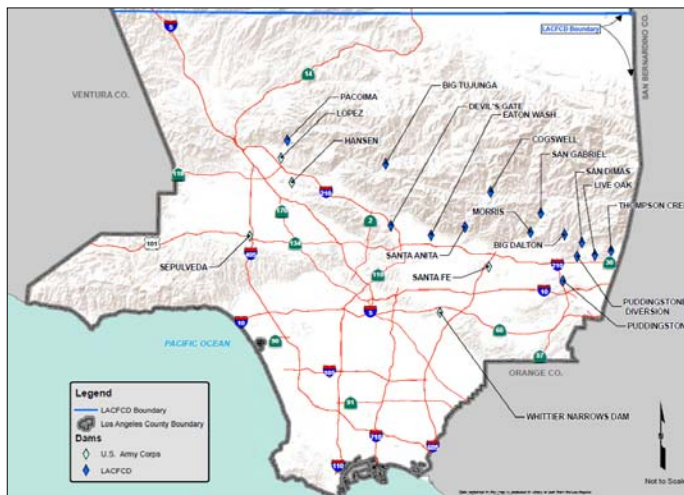


Flood Control District

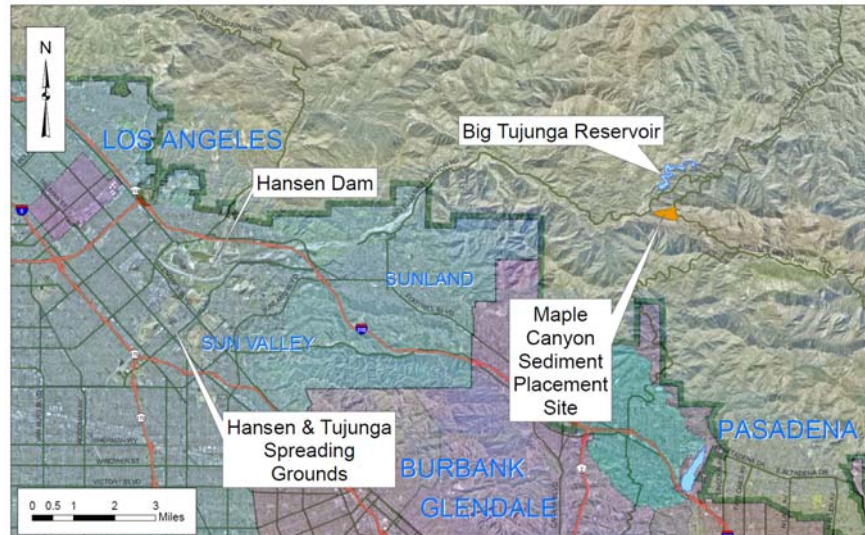


Owns and operates complex flood protection and water conservation systems that includes:

- 14 major dams
- 162 debris basins
- 500 miles of open channels
- 36 sediment placement sites



Big Tujunga Reservoir Location Map



Big Tujunga Reservoir Dam Retrofit Project April 2008 - February 2012

- \$100 Million Retrofit Project
- Seismically Strengthen Dam to Remove Threat of Failure During a Seismic Event



2009 Station Fire

- ◉ Station Fire Started on August 26, 2009 and Contained on October 16, 2009
- ◉ Burned over 160,000 acres in the San Gabriel Mountains above:
 - Altadena
 - La Canada Flintridge
 - La Crescenta
 - Glendale
 - Tujunga
 - Acton



Effect of Station Fire

Big Tujunga Reservoir

- ⦿ Burned 87% watershed tributary to Big Tujunga



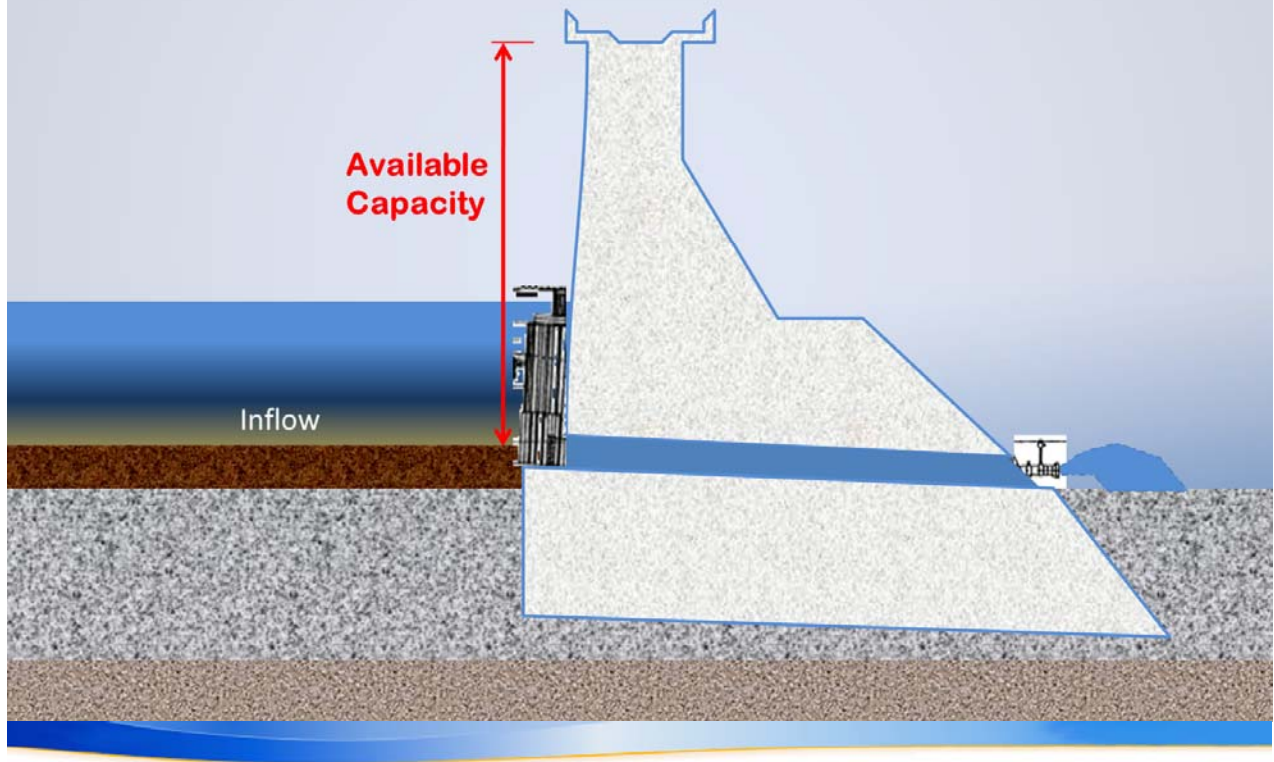
Effect of Station Fire

Big Tujunga Reservoir

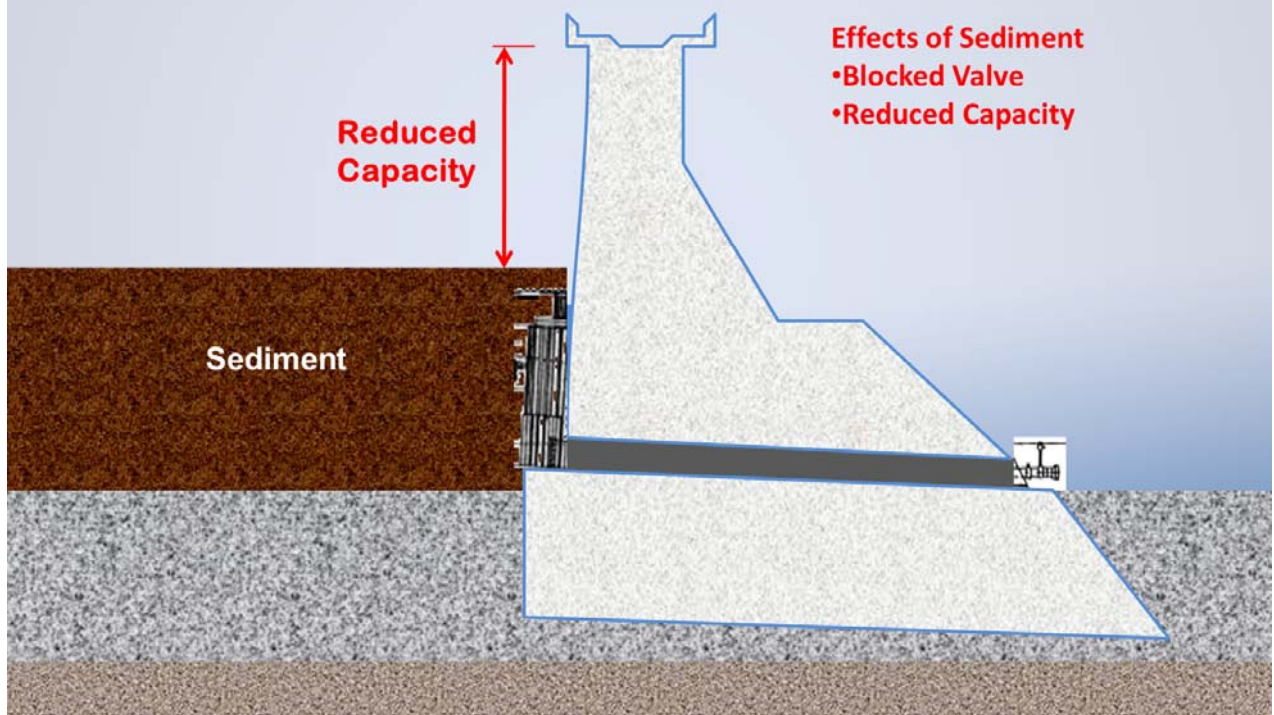
- ⦿ Burned 87% watershed tributary to Big Tujunga



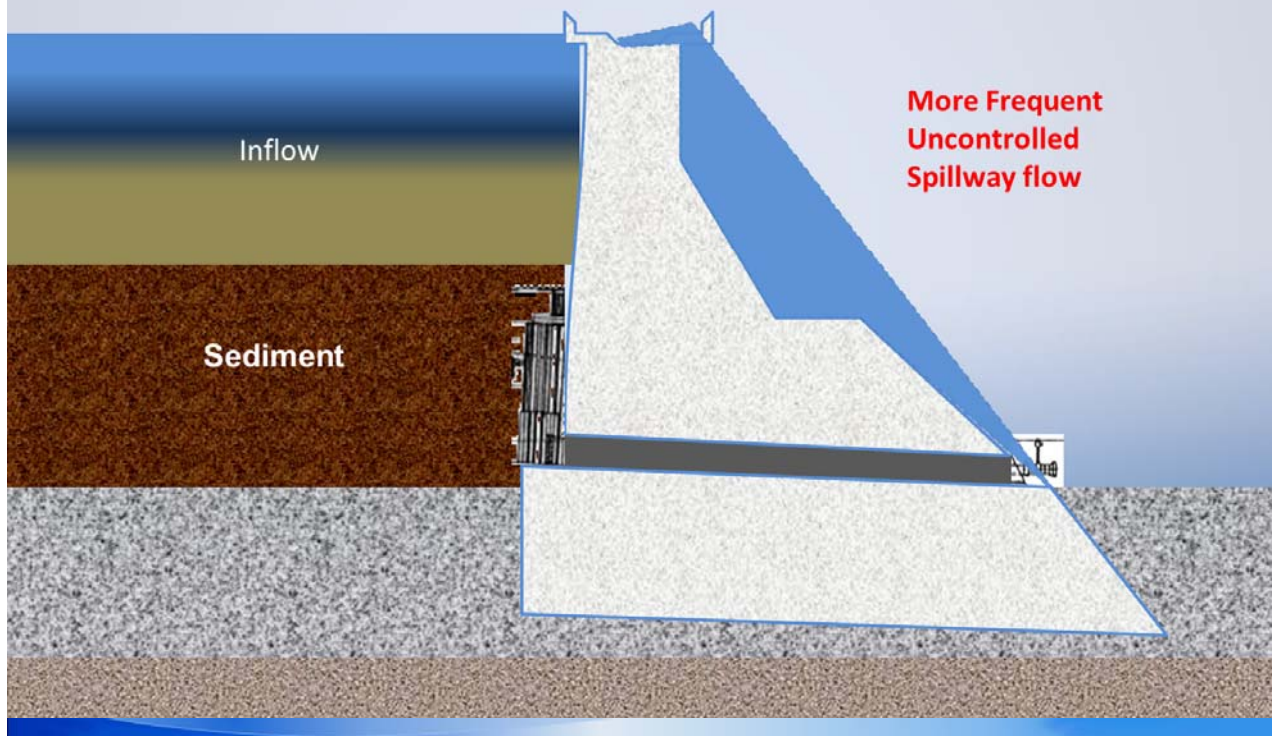
Sediment & Dams



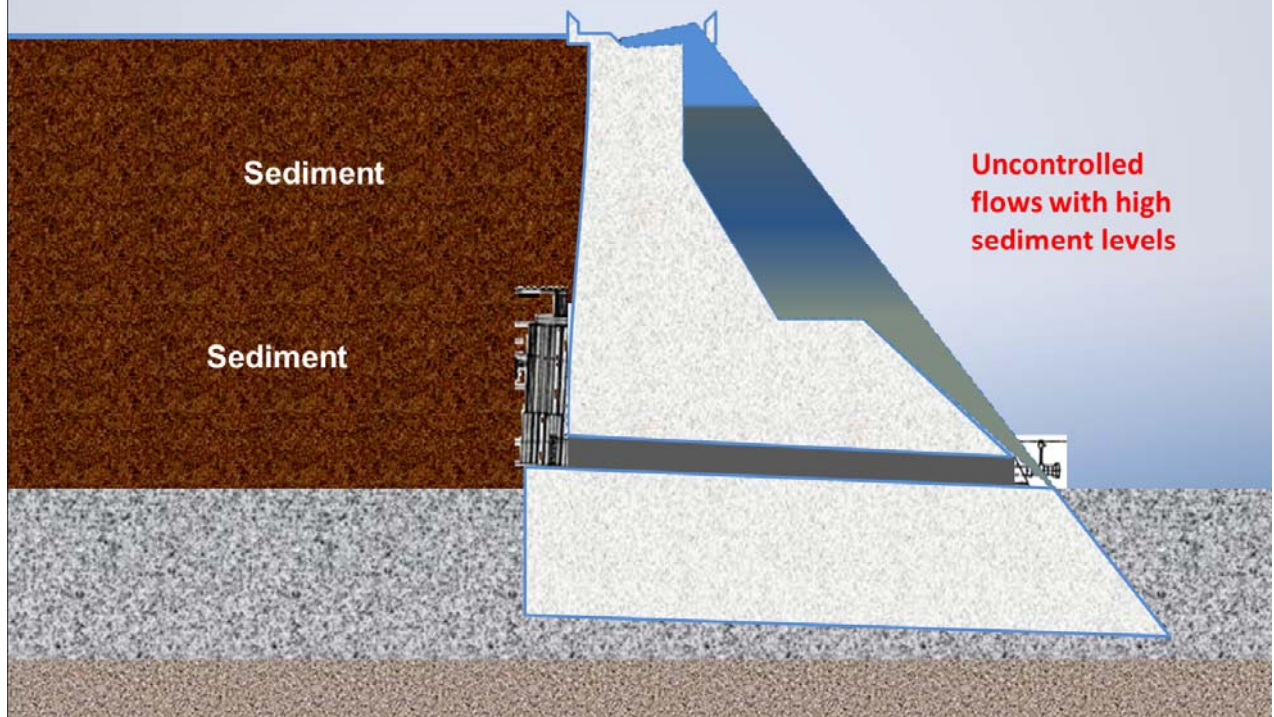
Sediment & Dams



Sediment & Dams



Sediment & Dams

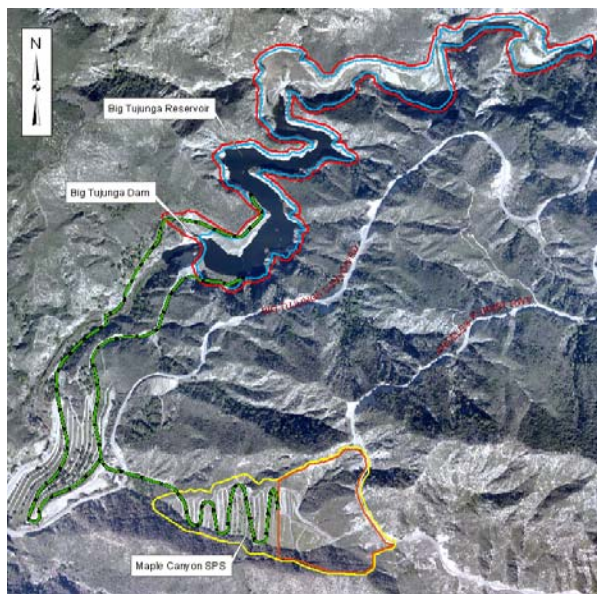


Sediment Management Strategic Plan

- 20-year Sediment Management Strategic Plan
- Provides Overview of Various Strategies to Identify Optimal Solutions



Big Tujunga Reservoir Sediment Removal Project Limits



Big Tujunga Reservoir Maple Canyon Sediment Placement Site

- First utilized for sediment placement in 1981
- Placement of fill will impact 10 additional acres within the SPS, as originally authorized by USFS
- Working with USFS on Restoration Plan



Big Tujunga Reservoir Transportation Alternatives

Low Emission Trucking



Conveyor System

