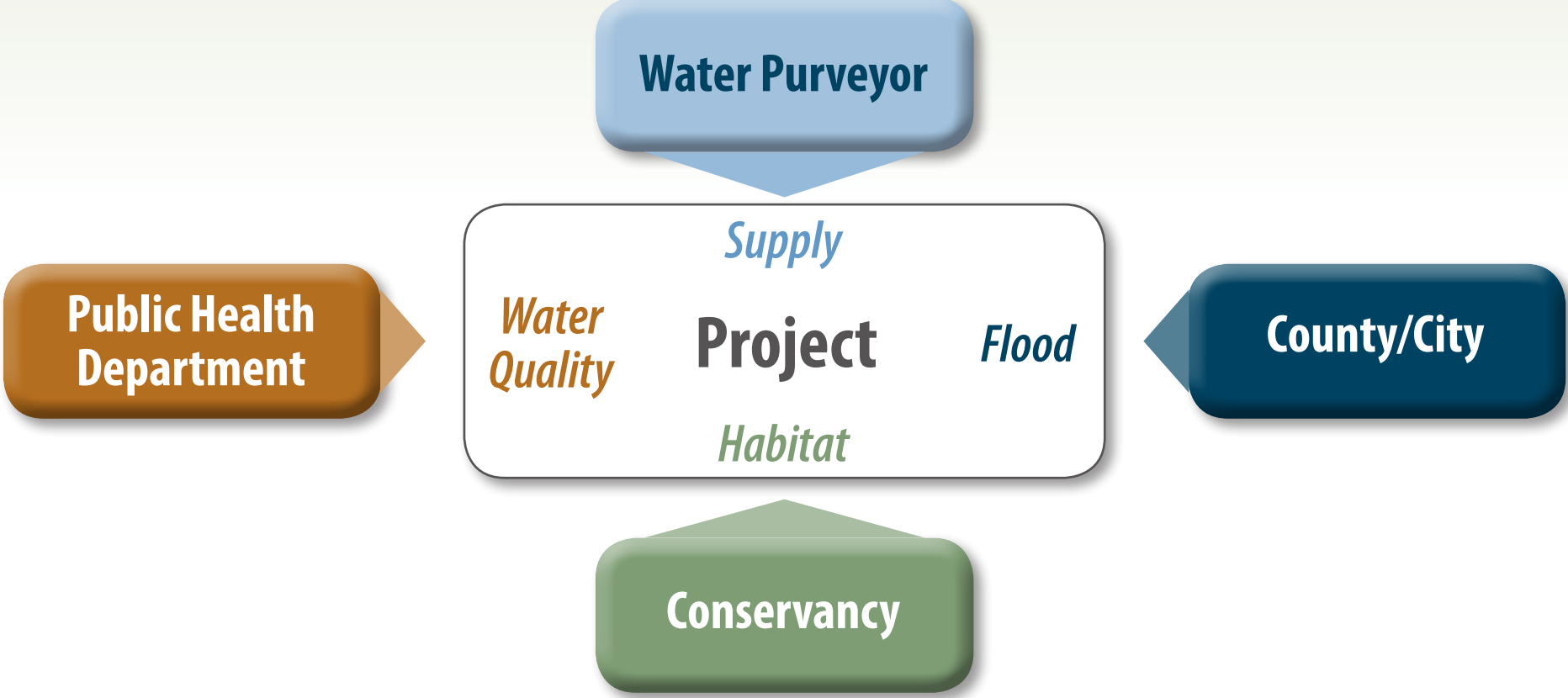


Antelope Valley Integrated Regional Water Management (IRWM)

The IRWM Program was developed to encourage collaboration on water issues



Integrated Regional Water Management (IRWM) is a collaborative effort to manage all aspects of water resources in a region. IRWM crosses jurisdictional, watershed, and political boundaries; involves multiple agencies, stakeholders, individuals, and groups; and attempts to address the issues and differing perspectives of all the entities involved using mutually beneficial solutions.

This State program encourages local agencies to work cooperatively to manage local and imported water supplies to improve quality, quantity, and reliability.

The State is organized into IRWM Regions based on shared challenges & responsibilities



The Antelope Valley Region is one of 48 regions in the State of California. Regions are defined as contiguous geographic areas encompassing the service areas of multiple local agencies, and are defined to maximize the opportunities to integrate water management activities. Each region is self-defined, and is then approved by the California Department of Water Resources. Approved Regions are eligible to apply for grant funding.

Numerous Antelope Valley stakeholders have been engaged in the Program since 2006

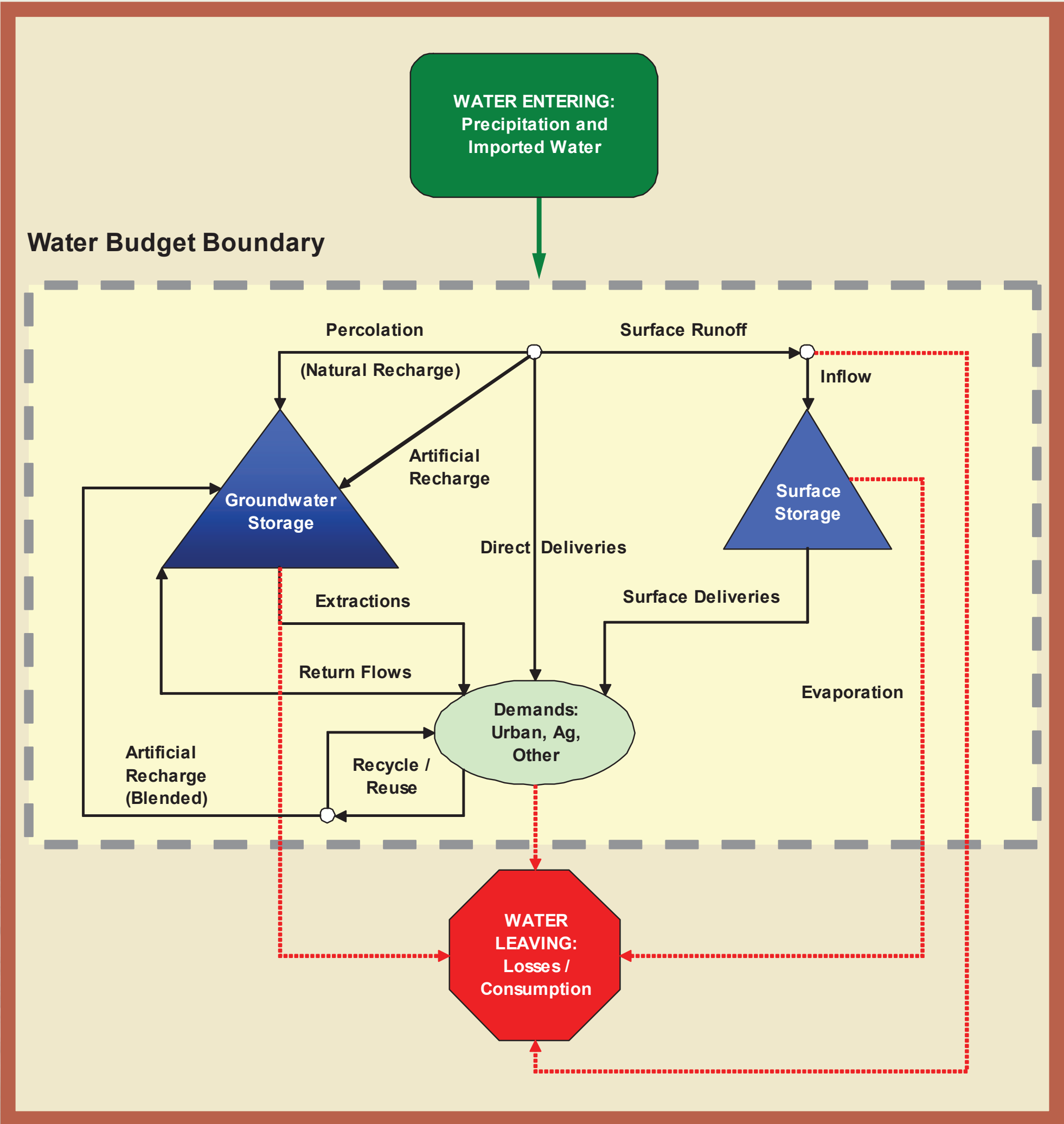
Regional Water Management Group



Other Stakeholders

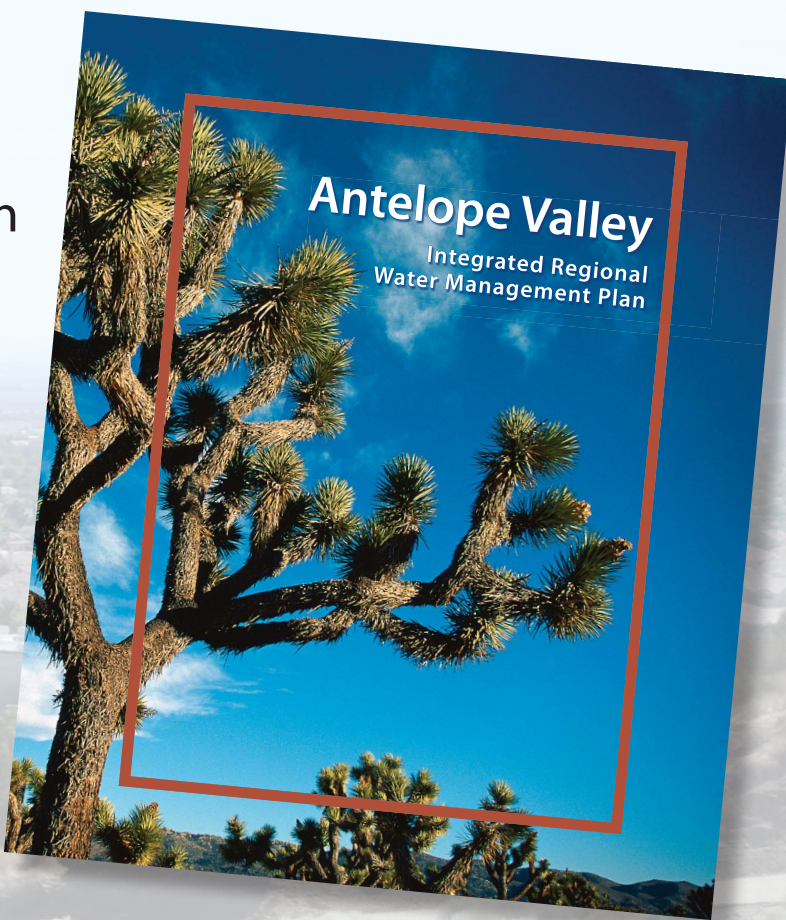
- Antelope Valley Board of Trade
- Antelope Valley Conservancy
- Antelope Valley Resource Conservation District
- Antelope Valley United Water Purveyors
- Building Industry Association - Antelope Valley Chapter
- California Dept. of Fish & Game
- California Dept. of Public Health
- California Dept. of Water Resources
- California State Water Resources
- California State Parks
- City of Boron
- City of California City
- Edwards Air Force Base
- Kern County Board of Supervisors, District 2
- Kern County Farm Bureau
- Kern County Planning Dept.
- Lahontan Regional Water Quality Control Board
- Lake Los Angeles Town Council
- Lake Los Angeles Park Association
- Leona Valley Town Council
- Los Angeles Co. Board of Supervisors Office, District 5
- Los Angeles Co. Dept. of Public Works, Watershed Management Division
- Los Angeles Co. Dept. of Regional Planning
- Los Angeles Co. Farm Bureau
- Mojave Desert Mountain Resource Conservation and Development Council
- Mutual Water Companies
- National Education Association, Antelope Valley
- National Resources Conservation Service
- Roosevelt Town Council
- Sierra Club
- Sundale Mutual Water
- Town Councils
- Tybrin Corporation at Edwards Air Force Base
- U.S. Department of Agriculture
- Westside Park Mutual Water Company
- White Fence Farms Mutual Water Company

The Region has a complex water balance

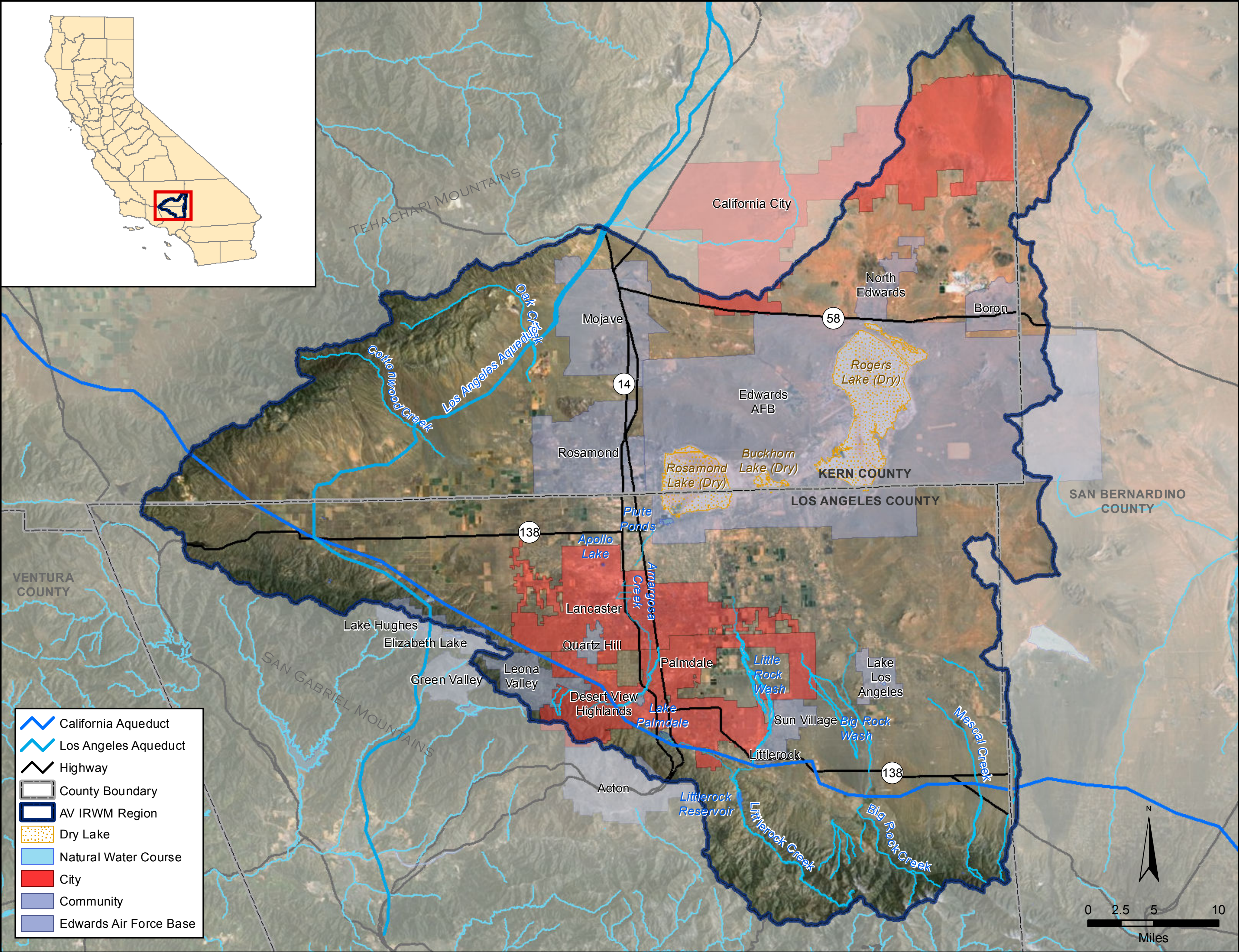


Stakeholders have collaborated to develop water management objectives and to write an IRWM Plan that is periodically updated

- Water Supply**
 - Provide reliable water supply and adapt to climate change
 - Establish a supply contingency plan
 - Stabilize groundwater levels
- Water Quality**
 - Meet regulatory requirements and customer expectations
 - Protect and maintain aquifers
 - Protect streams and recharge areas
 - Maximize beneficial use of recycled water
- Flood Management**
 - Reduce negative impacts of stormwater, urban runoff, and nuisance water
 - Optimize the balance between existing beneficial uses of stormwater and capturing stormwater for new uses
- Environmental Resources Management**
 - Preserve open space and natural habitats, and enhance water resources and species in the Region
- Land Use Planning/Management**
 - Maintain agricultural land use
 - Meet growing demand for recreational space
 - Improve integrated land use planning to support water management
- Climate Change**
 - Mitigate against climate change



The Antelope Valley IRWM Region is made up of many unique cities and communities.



The Antelope Valley communities are working together through IRWM to implement water projects for the benefit of all.

