

SPLASH

Los Angeles County Waterworks Districts' Quarterly Newsletter

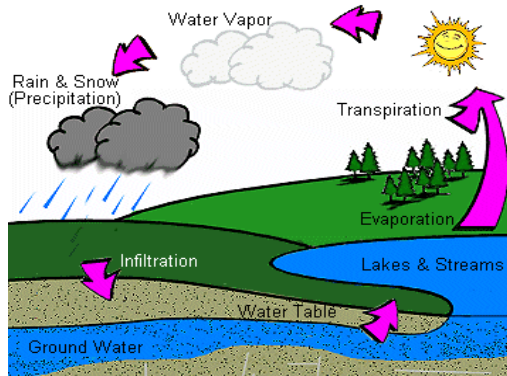
Fall 2004

Where Does Our Water Come From?

Each drop of water from your faucet was at one time a rain drop, part of a river, or hundreds of feet underground. The diagram below displays how water moves through a continuous cycle and never leaves the earth.

As a Waterworks Districts (Districts) customer, you might say, "Here in Southern California there is not a lot of rain, and I hardly ever see a flowing river. Where does my water come from?"

A major source of water for the Districts' customers is the State Water Project (SWP) which conveys water to Southern California via the California Aqueduct (shown below). In the 1920's, the State of California recognized the need for a state-wide water project to meet the growing demands of the population and distribute water throughout the state. The state began constructing the SWP in the late 1950's, and today it is the nation's largest state-built water conveyance system. Since most of California's rain falls in the northern portion of the state and over



THE HYDROLOGIC CYCLE



THE CALIFORNIA AQUEDUCT

half of the population lives in the southern portion, the SWP carries water over 660 miles from the Sacramento-San Joaquin Delta to as far south as Lake Perris near Riverside. The Districts purchase water from several different agencies that have rights to receive water from the SWP, treat it to meet drinking water standards, and supply it to retail water purveyors and other customers. The diagram to the right shows the agencies that the Districts purchase water from in your area. If you

would like to learn more about the SWP, visit <http://www.publicaffairs.water.ca.gov/swp/>.

In addition to the water the Districts receive from the SWP, groundwater is also used to meet the needs of our customers in the Antelope Valley, Acton, Val Verde, and Kagel Canyon. Rain water that does not evaporate seeps into the ground and replenishes the groundwater. You may not see water in the Santa Clara River during the summer in Acton, but below the dry river bed there is still subsurface flow. Also, within the San Gabriel Mountains there are pockets that are refilled with water each year during the rainy season that provide water to Kagel Canyon. The ground in these areas stores the water during times of rain which can then be pumped by the Districts throughout the year.

Because Southern California receives only limited amounts of rain, the Districts limit the amount of water they pump from the ground each year to protect the balance that permits the groundwater to be available year after year. On average, the Districts extract about 6.5 billion gallons of water from the ground each year, or enough to supply the needs of about 25% of our customers.

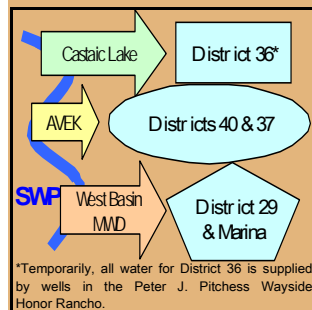
We are working hard to effectively manage our water resources. The State of California also ensures that all the available water throughout the state is distributed fairly. You too, can be a part of managing water wisely by carefully evaluating the ways you use water in and around your home. Every drop counts in the big picture. Let's work together to manage and use this shared resource wisely.

-Contributions for this article were made by Dan Jones, Superintendent, Lancaster Field Office

Something New!

Hear water conservation tips by calling **1-888-CLEAN-LA** or by clicking on the water conservation link at www.888CleanLA.com

ANTELOPE VALLEY, listen for water conservation messages daily on **Oasis 105.5 FM**, **KTPI 103.1 FM**, and **Fox Sports 610 AM**



County of Los Angeles
Department of Public Works
P.O. Box 1416
Alhambra, CA 91802-1416

Mission:
To enrich lives through
effective and caring service.

Questions or Comments?
Please contact us at:
Phone: (626) 300-3351
Fax: (626) 300-3385
Email: drydman@ladpw.org

This newsletter is printed on recyclable paper.

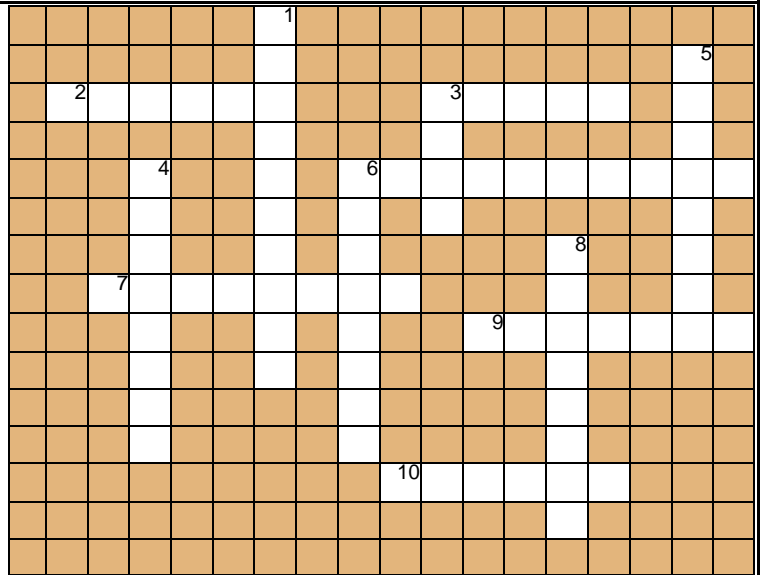
LET'S SAVE WATER CROSSWORD PUZZLE

Down

1. Make sure your ___ water the grass, not the sidewalk or driveway.
3. Use a bucket to ___ the car, and a hose to rinse it.
4. This kills germs in water so we can drink it and swim in it.
5. Water comes from Northern California through an ___ to supply water to the Antelope Valley.
Hint: Read the cover article.
6. Sweep the ___ instead of hosing it down.
8. Turn the water off while you are ___ your teeth.

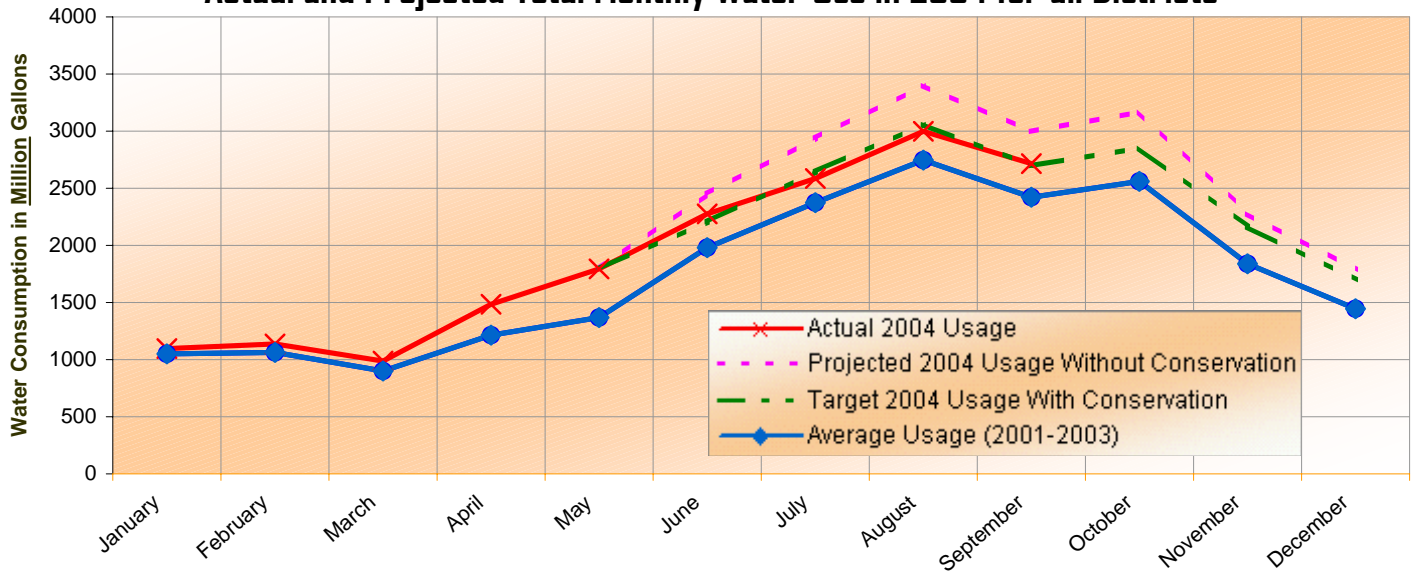
Across

2. Shut the water off while sudsing in the ___.
3. Save water, don't ___ it.
6. Run the ___ or washing machine only when they are full.
7. If we do not waste water, and use it carefully and sparingly, we ___ it.
9. Fix all leaky ___ in your bathroom or kitchen.
10. We walk on this and can pump water from it too.



**Kids, bring your completed crossword puzzle to any of our field offices and receive a fun prize.
See Q&A for office locations.**

Actual and Projected Total Monthly Water Use in 2004 for all Districts



The chart above shows the Districts' actual monthly water consumption compared to the average values for the previous three years, and projections made in May based on trends observed in the early part of this year. Throughout the Districts, customers responded to reduce excessive water use. During the summer months, overall water use was in line with the increases we anticipated given the population growth throughout our Districts. Thank you for your efforts to use water wisely. Conserving water saves a valuable resource.

Q & A Q) Can I set up my account to be paid automatically, and can I pay by credit card?

A) Currently, only cash, checks, or money orders can be used to pay your water bill. Payments can be made either by mail or in person at one of our offices. The Districts are exploring the possibility of accepting credit card payments in the near future.

Q) Where can I pay my water bill?

- A) Your water bill can be paid in person at any of our offices. Our offices are located at:
- 900 South Fremont Avenue, Alhambra, CA in the cashier's office on the Mezzanine
 - 23533 West Civic Center Way, Malibu, CA
 - 260 East Avenue K-8, Lancaster, CA
 - Building and Safety Office at 23757 Valencia Boulevard, Valencia