

Spring 2006

splash



DISTRICT NO. 40, ANTELOPE VALLEY
Los Angeles County
Waterworks Districts' Quarterly Newsletter

AQUIFER STORAGE AND RECOVERY PROGRAM

In an effort to store surplus imported water in the Antelope Valley, the District began injecting treated surface water into the local groundwater aquifer in November 2005. The goal of this project, called the Aquifer Storage and Recovery Program (ASR), is to store surplus water in "wet" years in the ground, so that it may be recovered with the District's wells for use in "dry" years. To do so, the Lahontan Regional Water Quality Control Board (RWQCB) granted the District a conditional permit to inject up to 6,800 acre-feet of water annually for the next five years.

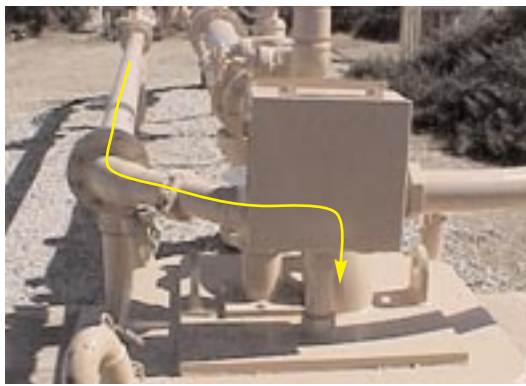
The District purchases the water for ASR from the Antelope Valley-East Kern Water Agency (AVEK). AVEK, our imported-water-wholesale-supply agency for the Antelope Valley, receives an allotment of water each year from the State Water Project. AVEK often receives more water in the winter than it can sell to customers. Rather than let the surplus water go to waste, the District purchases the water from AVEK at a discounted rate.

The District set an initial target this winter to inject between 1,200 and 1,700 acre-feet of water. Prior to injection into the aquifer, AVEK treats the water to meet State and Federal drinking water standards. The District regularly monitors the volume and quality of injection water and the changes in groundwater levels for semi-annual reports which are submitted to the RWQCB. Next winter, the District plans to expand operations in order to increase the amount of water stored. To meet this goal, the District will modify approximately ten to twelve of its existing groundwater wells to be used for ASR.

As the population continues to grow in the Antelope Valley, the District recognizes the need to store water for dry periods. Every drop of water counts, so the District will use ASR as one of several projects to best manage the available water supplies in the Antelope Valley.



Field staff install an ASR injection line.



AVEK water is injected into the aquifer.

FAQ

When is the best time to water my lawn?

The best time for watering is in the early morning. The cooler temperatures reduce the amount of water lost to evaporation.



County of Los Angeles
Department of Public Works
P.O. Box 1460
Alhambra, CA 91802-1460

Mission: - To enrich lives through effective and caring service.

Questions or Comments?
Please contact us at:
Phone (626) 300-3351
Fax: (626) 300-3385
Email: drydman@ladpw.org

Visit the California Poppy Festival at Lancaster City Park
April 22nd and 23rd.

Palmdale Water Awareness Fair
2029 E Avenue Q
May 20th and 21st

DIGALERT



800-227-2600

As California continues to grow, so does the important infrastructure that we depend on which is buried underground. Just about anywhere you dig there could be an underground facility lying in wait. With this being the case, how do you avoid hitting them?

Call The Toll Free Number Two Days Before You Dig

Water leaks can drain your pockets!

An undiscovered water leak can quickly cost you hundreds of dollars. Customers often find they have a leak after a long time, when the water has already caused significant damage to their homes. When this happens, customers are left paying not only to fix the leak and any damage caused by it, but also for the water that went to waste.

Regularly checking for leaks (at least twice a year) is the best way to avoid costly bills. You can do this by following three easy steps. Here's how:

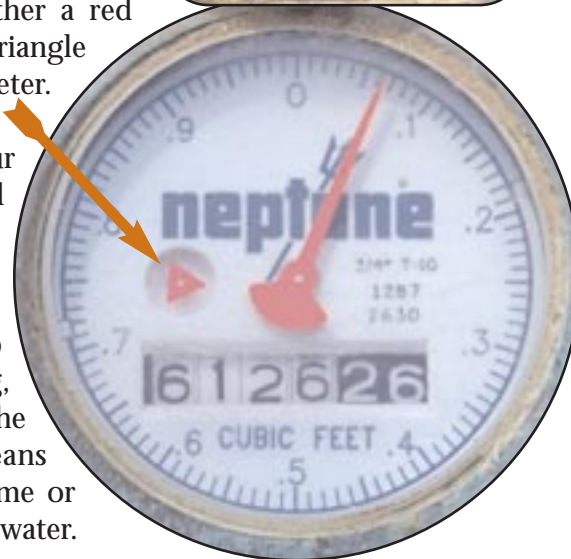
1. Find your water meter. It's usually near your driveway next to the street in a small underground concrete box. Clean off any debris or dirt so you can see the meter's dials and numbers.

2. Make sure no water is being used in your home. Turn off the sprinklers, washing machine, and dishwasher, and ask everyone in your home not to use the toilet, hoses, faucets, shower, or anything else that uses water while you're checking the meter.

3. Check for movement on the meter's dial. There is either a red sweep hand or a red triangle under the glass on your meter.

If there is no leak at your home, the red sweep hand or triangle will not be moving because no water is passing through the meter. If the red sweep hand or triangle is rotating, water is passing through the meter, which either means there is a leak at your home or that someone is still using water.

For more information on locating and repairing leaks, visit www.h2ouse.org/action/ or contact the local District office.



CUSTOMER CORNER

Smart Gardening Workshops to be held near You!

The Los Angeles County Waterworks Districts would like to encourage customers to attend upcoming Smart Gardening Workshops in the Antelope Valley area. These workshops are offered at no cost to you and provide simple and practical ways for homeowners to conserve water by utilizing water efficient landscaping practices. The dates and locations of these workshops have been listed below. If you cannot make one of the workshops listed below, please check the website <http://www.smartgardening.com> to find out when the next available workshop will take place near you!

**April 15, 2006
9AM to 11AM
George Lane Park
5520 W. Ave L-8
Quartz Hill, CA 93536**

or

**April 29, 2006
9AM to 11AM
Environmental Days Cleanup
Senior Center
1002 E. Ave Q-12
Palmdale, CA 93531**

**Please call 1-866-648-2925
to schedule your free water use survey!**