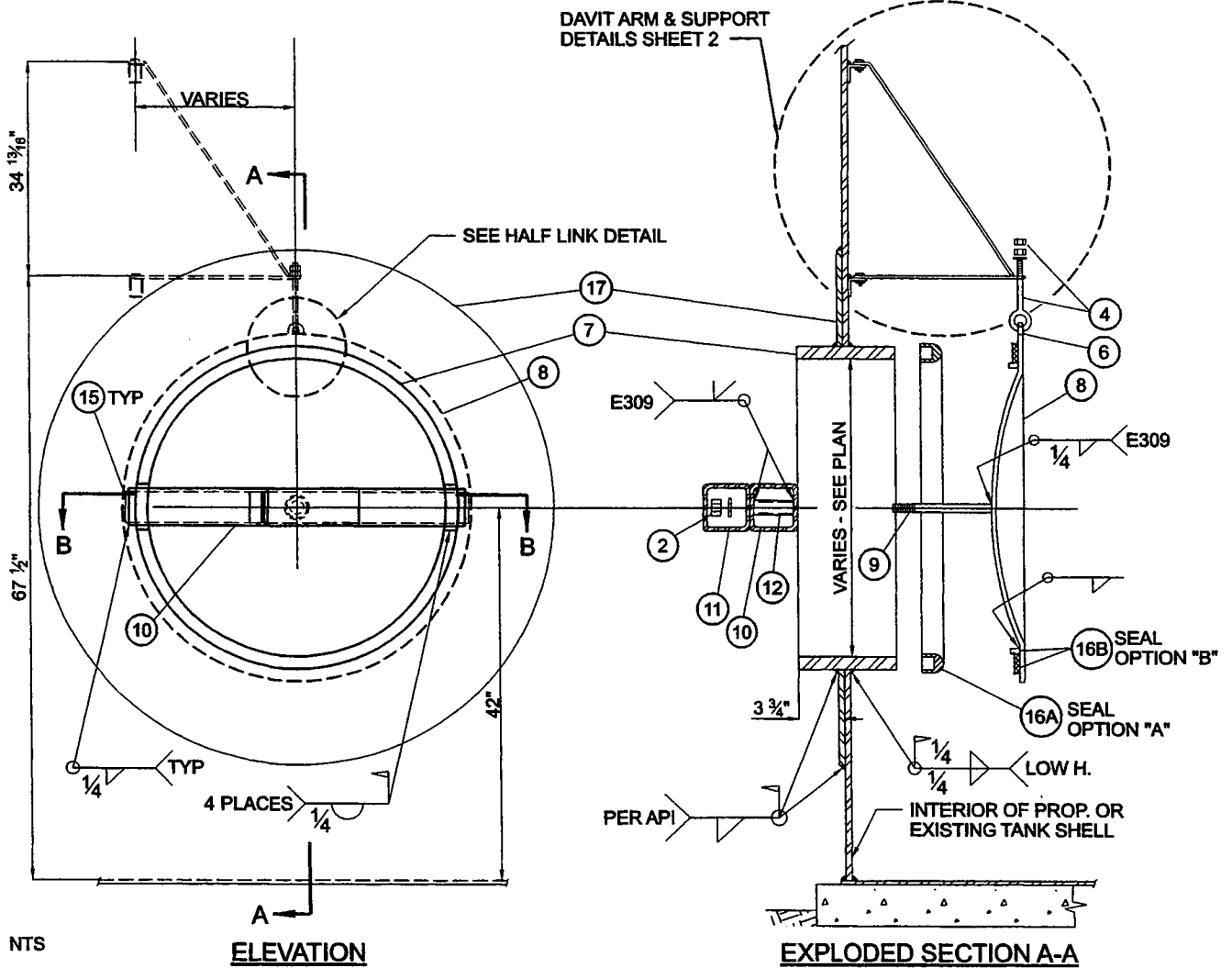
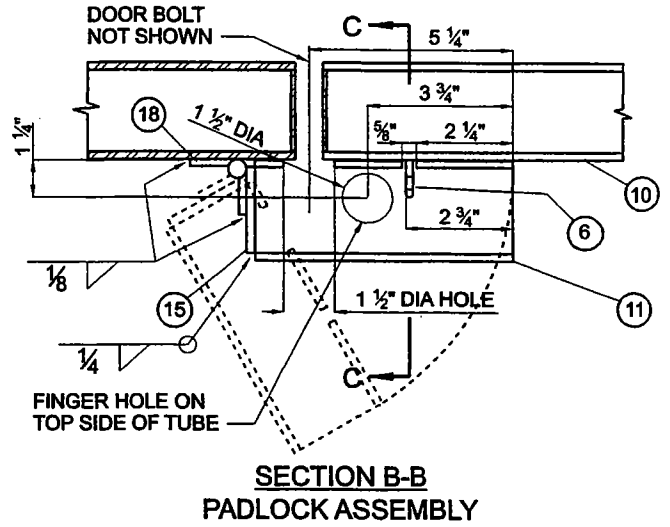
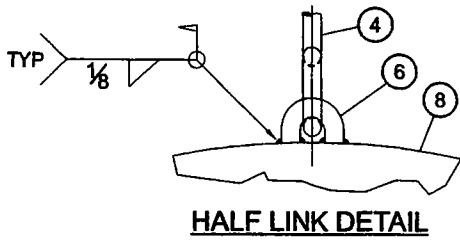
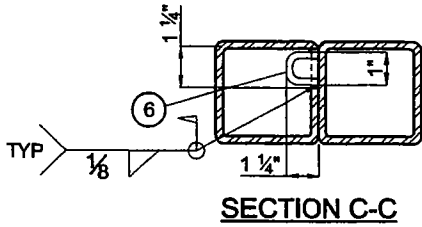


TANK - SHELL ACCESS HOLE  
STYLE A - MONOBOLT

STYLE A



LOS ANGELES COUNTY WATERWORKS DISTRICTS

DEPARTMENT OF PUBLIC WORKS

STANDARD PLAN

W-28

APPROVED

ASSISTANT DEPUTY DIRECTOR

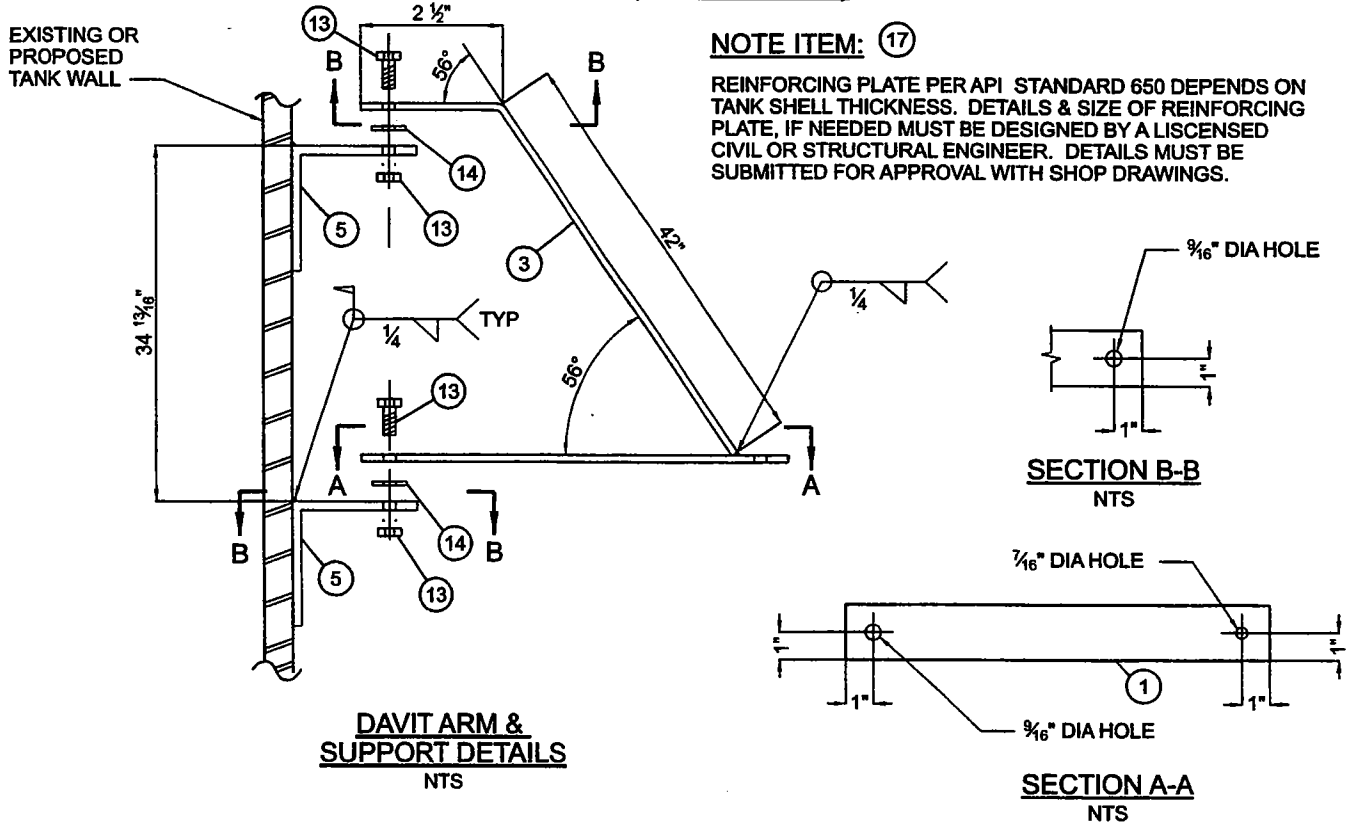
APRIL 2004

DATE

SHEET 1 OF 3

TANK - SHELL ACCESS HOLE (CONTINUED)  
 STYLE A - MONOBOLT (CONTINUED)

STYLE A (CONTINUED)



MATERIAL LIST

ITEM	DESCRIPTION	MATL	PCWT LBS	REQD
1	FLAT BAR, 3/8" x 2" x 28" LG	SS304	6	1
2	NUT, 3/4" HEAVY HEX & WASHER	BRNZ	—	1
3	FLAT BAR, 1/4" x 2" x 44 1/2" LG	SS304	7	1
4	EYE BOLT, 3/8" x 3" w/WASHER & (2) NUTS	SS18-8	—	1
5	ANGLE, 3" x 3" x 3/8" x 2" LG	SS304	1	2
6	HALF RING, 5/16" x 2 1/4"	SS18-8	—	2
7	PLATE, 1" x 8 1/2" x 9'-8 1/4" LG ROLLED TO 36" ID	A516-70	277	1
8	DISHED (HAT) HEAD 3/8" X 32" ID X 41 1/2" OD X 32" RAD	A285	136	1
9	ROUND BAR, 3/4" DIA x 9" LG WITH 2" NC T.O.E.	SS18-8	2	1
10	TUBE, SQUARE, STRUCTURAL, 3" x 3" x 1/4" x 39" LONG	A500	24	1
11	TUBE, SQUARE, STRUCTURAL, 3" x 3" x 1/4" x 7" LONG	A36	—	1
12	PIPE, 3/4" x STD WT. x 3" LG	SS304	—	1
13	BOLT, 1/2"-13 NC x 1" LG WITH NYLOCK NUT & WASHER	SS304	—	2
14	NYLON WASHER	NYLON	—	2
15	FLAT BAR, 2 1/2" x 1/4" x 2 1/2" LG	A36	1	3
16A	OPTION "A": C RING GASKET x 1/4" x 35" ID 50 DURO-HARD	NEOPR.	—	1
16B	OPTION "B": NEOPRENE GASKET, 1/4" x 1 1/4" x 35" ID & 1/4" x 1/2" x 9'-6 5/16" BAR ROLLED TO 35" ID	NEOPR.	—	1
		A36	4	1
17	REINFORCING PLATE PER API STANDARD 650 (SEE NOTE HEREON)	A36	—	1
18	STEEL HINGE, 1" x 2 1/2"	A36	—	1

LOS ANGELES COUNTY WATERWORKS DISTRICTS

DEPARTMENT OF PUBLIC WORKS

STANDARD PLAN

W-28

APPROVED

ASSISTANT DEPUTY DIRECTOR

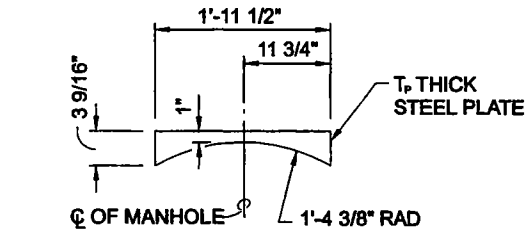
APRIL 2004

DATE

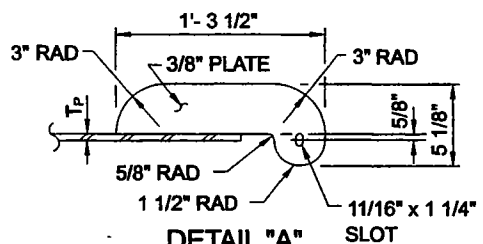
SHEET 2 OF 3

TANK - SHELL ACCESS HOLE (CONTINUED)  
 STYLE B

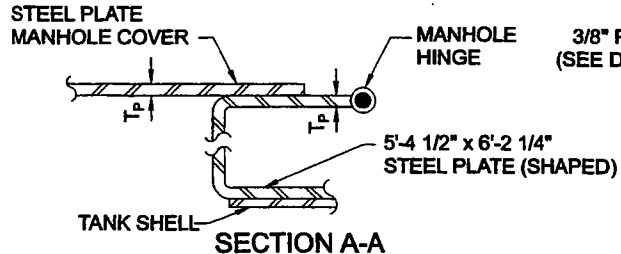
**STYLE B**



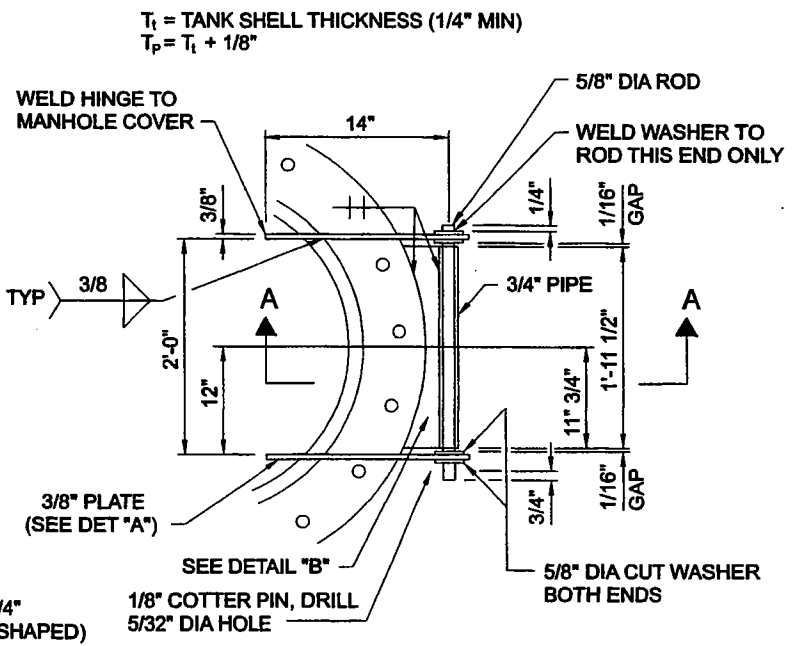
**DETAIL "B"**  
 NTS



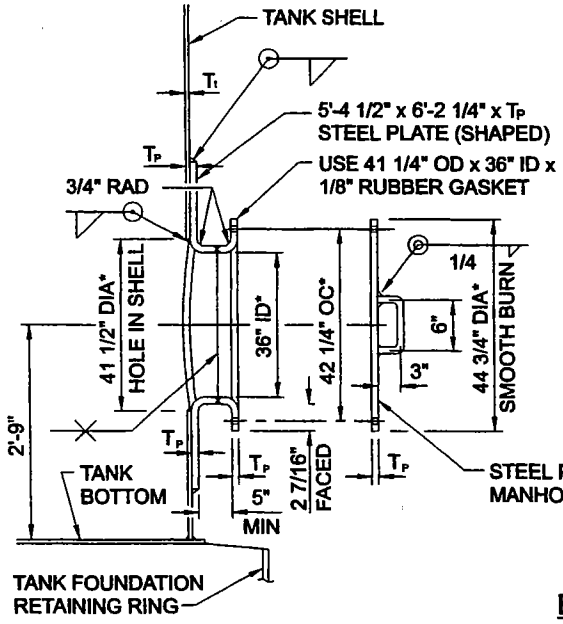
**DETAIL "A"**  
 NTS



**SECTION A-A**  
 NTS

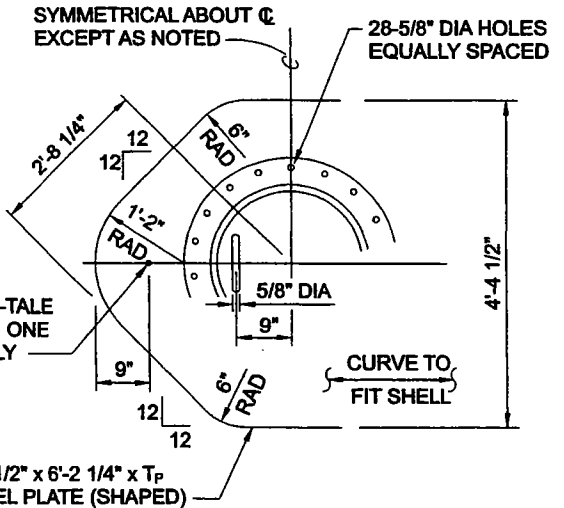


**MANHOLE COVER HINGE**  
 NTS



**ELEVATIONS**

**TANK SHELL MANHOLE**  
 NTS



\*OR AS SHOWN ON PLANS.

LOS ANGELES COUNTY WATERWORKS DISTRICTS

DEPARTMENT OF PUBLIC WORKS

STANDARD PLAN

**W-28**

APPROVED

*[Signature]*  
 ASSISTANT DEPUTY DIRECTOR

APRIL 2004

DATE

SHEET 3 OF 3